




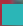



# ARTS



UNIVERSITY OF  
SURREY

## SPRING | SUMMER 2015

-  MUSIC
-  DANCE
-  THEATRE
-  FILM
-  LECTURES
-  VISUAL ARTS
-  FESTIVALS

[SURREY.AC.UK/ARTS](http://SURREY.AC.UK/ARTS)

# Contents

---

Calendar at a glance	page 4
Programme of events	pages 6-39
Exhibitions and Installations	pages 40-49
Classes & Workshops	pages 50-51
Booking information	page 52
Map of University venues	page 54



## Welcome

---

I have great pleasure in introducing our Spring and Summer programme for the School of Arts at the University of Surrey.

Professional visiting artists and speakers feature alongside student performers. Collaboration is at the heart of our programming and many events cross variously between music, dance, theatre, film and digital media.

You will find a broad range of events scheduled – from musicals to contemporary dance and theatre; lectures, seminars and symposia to a programme of concerts in venues across Guildford; and a series of films on campus and exhibitions and installations in the Lewis Elton Gallery.

In March we look forward to the biennial Guildford International Music Festival – highlights this year include Alfred Brendel and Sir Richard Stilgoe, Tenebrae and the Cavaleri Quartet alongside the Mugenkyo Taiko Drummers, Ian McMillan and a wide range of events presented in association with our Cultural Partners at venues across Guildford. An introduction is included here, with full details listed in a separate brochure or on the website at [www.surrey.ac.uk/arts](http://www.surrey.ac.uk/arts).

Please take time to browse through the programme and do check the website for further details.

I very much look forward to welcoming you to our events – both on and off campus.

**Andy Lavender**

*Head of the School of Arts*

# Arts Calendar

Spring | Summer 2015

**KEY**

- MUSIC
- DANCE
- THEATRE
- FILM
- LECTURES
- VISUAL ARTS



The Creek Men by Laurence Edwards FRBS

## FEB

- Sat 7 - ■ Sister Act
- Sat 14
- Sun 8 ■ Music Showcase
- Mon 9 ■ Thinking Taiwan Opens
- Mon 9 - ■ The 'Wars of the Roses'
- Sat 21 Season
- Wed 11 ■ Lunchtime Recital
- Wed 11 ■ Book Launch
- Wed 18 ■ Lunchtime Recital
- Wed 18 ■ Philosophy and the work of conceptual dance
- Wed 18 - ■ *Noises Off!*
- Fri 20
- Sat 21 ■ *Carmina Burana* Carl Orff
- Tue 24 ■ *True West* Lone Twin
- Wed 25 ■ Lunchtime Recital
- Wed 25 ■ Phenomenology & Performance
- Wed 25 ■ Rollin' On: Piano(la) Grooves Uncovered
- Thu 26 ■ Chicken Run

## MAR

- Wed 4 ■ Croser Hughes Competition
- Wed 4 ■ Shakespeare in Practice
- Wed 4 ■ Laurence Edwards FRBS
- Wed 4 - ■ *Blue Stockings* by
- Sat 7 Jessica Swale
- Mon 9 ■ The Player-Piano and Pianola
- Wed 11 ■ Compositional Sketches Study Day
- Wed 11 ■ Lunchtime Recital
- Thu 12 ■ Wallace and Gromit: The Curse of the Were-Rabbit
- Thu 12 - ■ *13* by Mike Bartlett
- Sat 14
- Fri 13 - ■ Guildford International
- Sun 22 Music Festival
- Wed 18 ■ GSA Acting Showcase 2015

- Wed 18 - ■ *How to Disappear*
- Sat 21 ■ *Completely and Never Be Found* by Finn Kennedy
- Tue 24 ■ Harmless Funk
- Wed 25 ■ Lunchtime Recital
- Wed 25 ■ Ensembles Concert
- Wed 25 - ■ On the Town
- Sun 29
- Thu 26 ■ Alice in Wonderland

## APR

- Thu 16 - ■ The State We're In:
- Fri 17 Directions In Researching Post-1900 British Music
- Thu 16 ■ A Concert Of English Song
- Sat 18 ■ Laban / Lamb Symposium on Movement and Dance
- Sun 26 ■ Album for the Young
- Mon 27 ■ Open Gallery Installations
- Wed 29 ■ Lunchtime Recital
- Wed 29 ■ Graham Fitkin Guest Lecture
- Wed 29 ■ Composers' Careers
- Thu 30 ■ Chocolat

## MAY

- Fri 1 ■ Open Gallery Installations
- Wed 6 ■ Lunchtime Recital
- Wed 6 ■ Maaik Bleeker
- Wed 6 ■ shall i sit here | c - monologues
- Sun 10 ■ Nikolai Demidenko
- Wed 13 ■ Paul Stanway Brass Competition
- Wed 13 ■ The Birth and Death of the Cool: Jazz's Screen Afflictions
- Wed 13 ■ Ensembles Concert
- Wed 13 ■ Patricia Volk MRBS

- Thu 14 ■ Chef
- Fri 14 ■ Niall Squire Guitar Competition
- Sat 16 ■ University Orchestra
- Mon 18 ■ Surrey Artists' Open Studios
- Tue 19 ■ Composition Concert
- Wed 20 ■ Benefactors' Concert
- Thu 21 ■ Composition Concert
- Fri 22 ■ Composition Concert
- Wed 27 ■ Lunchtime Recital
- Thu 28 ■ Film screening - title TBC
- Fri 29 ■ Joyce Dixey Competition Final

## JUL

- Tue 14 ■ Tre Artisti Toscani: Franco Mauro Franchi, Mario Minarini & Bruno Pauli
- Sat 18 ■ Practice as Research Festival

## JUN

- Wed 3 ■ Lunchtime Recital
- Tue 9 ■ Theory – Design – Practice
- Wed 10 ■ Lunchtime Recital
- Thu 11 ■ Film screening - title TBC
- Wed 17 ■ Lunchtime Recital
- Wed 17 ■ Audio Photography 10 Years on
- Tue 30 ■ Bloodlines

## RUSH-HOUR CONCERTS

SELECTED FRIDAYS AT 5.30PM IN PATS STUDIO ONE

Start the weekend with a swing at these short concerts.

For dates and details visit [surrey.ac.uk/arts](http://surrey.ac.uk/arts)

## GSA SHOWS

Full details are available on [surrey.ac.uk/arts](http://surrey.ac.uk/arts) and in a separate GSA productions brochure which can be downloaded from [gsauk.org](http://gsauk.org)



Booking opens Monday 19 January at 10am. Booking information on page 52.

Programme correct at time of going to press. The University of Surrey reserves the right to make changes to the programme if necessary.



# FEBRUARY

## Yvonne Arnaud Theatre

Millbrook, Guildford  
GU1 3UX

£15  
yvonne-arnaud.co.uk

Sat 7 - Sat 14 February

### Sister Act

3RD YEAR BA MUSICAL THEATRE

Music by Alan Menken  
Lyrics by Glen Slater  
Book by Cheri Steinkellner & Bill Steinkellner  
Additional Book Material Douglas Carter Beane  
Based on the Touchstone Pictures Motion Picture  
*Sister Act* written by Joseph Howard

"Amen to the season's happiest surprise,"  
*New York Post*

This feel-amazing musical comedy smash has audiences jumping to their feet in total agreement! A sparkling tribute to the universal power of friendship, *Sister Act* is reason to REJOICE!

Presented by arrangement with Josef Weinberger Ltd on behalf of  
MUSIC THEATRE INTERNATIONAL of NEW YORK



## United Reformed Church

83 Portsmouth Road,  
Guildford GU2 4BS

Admission Free -  
there will be a  
retiring collection

Sunday 8 February 3pm

### Music Showcase

Students present their work in this Assessment  
Showcase concert.

## Lewis Elton Gallery

Admission Free

Monday 9 February 5:30pm - 7pm

### When the Night Blossoms - All About Life

EXHIBITION PRIVATE VIEW - TAIWAN WEEK II

Full details available on [surrey.ac.uk/arts](http://surrey.ac.uk/arts)



## PATS Dance Studio (Films)

LTF Lecture  
Theatre block  
(Roundtable)

Admission Free

Monday 9 – Tuesday 10 February

### Thinking Taiwan: Young Artists And Society

TAIWAN WEEK II

Monday 9 February 7.30pm

Film Screening of *The Right Thing* (廣場) followed by  
Q&A with Director CHIANG Wei-hua 江偉華

Tuesday 10 February 4pm

Roundtable discussion. Speakers: Director Chiang  
Wei-hua, Jiho Chang (leader Wild Strawberry and  
Sunflower Movement), Klara Huang (artist), Joan  
Huang (photographer) and Dr Malte Kaeding (Surrey)

Tuesday 10 February 7.30pm

Film Screening of *The Mob* with a talk and Q&A with  
Chiang Wei-hua 江偉華

Full details on [surrey.ac.uk/arts](http://surrey.ac.uk/arts)



## The Ivy Arts Centre

£12  
£10 conc

Monday 9 – Saturday 21 February

### The 'Wars of the Roses' Season

GSA 3RD YEAR BA ACTORS

"The Wars of the Roses" season showcases the full  
talents of our graduating actors. We explore the  
current trend for cross gender casting, with an all  
male Henry IV, an all female Henry V, and a mixed  
gender cast Henry VI (but with some surprises  
thrown in).

The Henriad has been performed many times, but  
it is far from usual for a drama school to present  
the plays as a season in this way. We wanted to  
give our students, and our local audience, a chance  
to experience this sweep of British history, as  
Shakespeare saw it, and to create a truly epic project.

The productions are designed as a sequence, but will  
also stand individually.



# FEBRUARY

## PATS Studio One

Wednesday 11 February 1:10pm

Admission Free

### Lunchtime Recital

Student musicians perform – the programme features a wide array of instruments and styles.

## PATS Studio One

Wednesday 11 February 4pm

Admission Free

### Legacies of Ewan MacColl The Last Interview Edited by Allan F. Moore and Giovanni Vacca

#### BOOK LAUNCH

**Professor Allan Moore** introduces his new book which focusses on Ewan MacColl, a key figure in the English folk revival. MacColl gave two extended interviews with co-editor Giovanni Vacca in 1987 and 1988, not long before his death, and these provide the impetus for a re-examination of his methods, his politics and his aesthetic aims.

## PATS Studio One

Wednesday 18 February 1:10pm

Admission Free

### Lunchtime Recital

Student musicians perform – the programme features a wide array of instruments and styles.

## TB6, Teaching Block, University of Surrey

Wednesday 18 February 2pm-5pm

Admission Free

### Philosophy and the work of conceptual dance

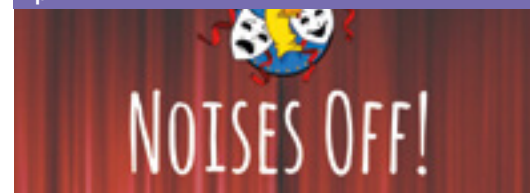
#### RESEARCH SEMINAR – PERFORMANCE PHILOSOPHY SERIES

With presentations by **Anna Pakes** (Roehampton) and dancer **Noé Soulier**. A leading researcher on contemporary dance, philosophical aesthetics and epistemology, Pakes will discuss her forthcoming monograph exploring the relationship between philosophy and conceptual dance. Trained in dance and philosophy, Soulier will present his interdisciplinary practice in performances such as *Ideography* (2011) and *Movement on Movement* (2013).

## The Ivy Arts Centre Studio 2

£6  
£4 conc / students

Wednesday 18, Thursday 19, Friday 20 February  
7pm



UNIVERSITY OF SURREY THEATRE SOCIETY PRESENT

### Noises Off!

by Michael Frayn

*Noises Off!* is a play within a play which follows the on (and off!) stage antics of a touring theatre company and their production of *Nothing On*. This farcical delight includes love triangles, a drunken burglar, and a whole bunch of sardines!

Presented in Association with Samuel French

## Guildford Cathedral

£13  
£10 conc  
£2 students

Saturday 21 February 7:30pm



### Carmina Burana Carl Orff

UNIVERSITY CHOIR & ORCHESTRA CONCERT  
Conductor Russell Keable

*Carmina Burana* is one of the most popular choral masterpieces of the 20th century. This 'scenic cantata' is based on 24 poems from the medieval collection *Carmina Burana* and features the much-loved opening 'O Fortuna', made famous by its use in countless television shows, commercials and films.

The University Choir and Orchestra will be performing this spectacular work in the magnificent setting of Guildford Cathedral, by kind permission of the Dean and Chapter.



## True West

### LONE TWIN & THE TABLE

**The Ivy Arts  
Centre**

£10

£8 conc

£2 Students / U18

**Tuesday 24 February 7:30pm**

"A triumph, theatrical magic" *The Times* on 'The Festival'

"Revolutionary theatre" *Time Out* on 'The Catastrophe Trilogy'

"Impossible to pigeon-hole, crosses boundaries and brings people together" *The Guardian*

The infamous Lone Twin duo return from an eight-year hiatus, with a raucous re-imagining of Sam Shepard's *True West*. The original play is set in a kitchen, in a house, in a suburb, some 40 miles out of Los Angeles in the late 1970s. It tells the tale of a family storm with two brothers at its eye. A classic study of social, cultural and political conflict and reconciliation, here *True West* is re-worked by Whelan, Winters and a tempestuous chorus drawn from the University's student population. Hold onto your hats, it's going to be quite a night.

**Lone Twin**



Revolutionary  
theatre



*Time Out* on 'The Catastrophe Trilogy'



# FEBRUARY



## PATS Studio One

Wednesday 25 February 1:10pm

Admission Free

### Lunchtime Recital

Student musicians perform – the programme features a wide array of instruments and styles.

## TB6

Admission Free

Wednesday 25 February 2pm-5pm



### Phenomenology & Performance

RESEARCH SEMINAR – PERFORMANCE  
PHILOSOPHY SERIES

With presentations by **Stuart Grant** (Monash, Australia) on 'Heidegger and the Origin of the Performative' with reference to eperformance, and **Matt Wagner** (Surrey), author of *Shakespeare, Theatre, and Time*.

## PATS Studio One

Wednesday 25 February 4pm - 6pm

Admission Free



### Rollin' On: Piano(la) Grooves Uncovered

RESEARCH SEMINAR

The world of the pianola and reproducing piano is a fascinating world full of riches which have scarcely been recognised by musicians, scholars or the general public. Many composers, including Scriabin, Rachmaninoff, Stravinsky and Debussy, recorded examples of their own works in this medium. Studying these performance practices can provide real insights into lost musical traditions of the past. This seminar is convened by **Professor Clive Williamson** (Surrey) and **Dr Georgia Volioti** (Surrey), with invited speakers **Denis Hall**, one of the world's leading authorities on player pianos, and **Rex Lawson**, the only professional pianolist in the world. Rex will also perform on the pianola-fitted Steinway in PATS Studio One. Exhibition details on p 40.

# MARCH



Rik Medlik  
Building,  
University of  
Surrey

£5  
£2 students / U18  
CERT U

Thursday 26 February 7:30pm

## Chicken Run

FILM SCREENING – AARDMAN ANIMATION SERIES

*Chicken Run* is a comedy escape drama with a touch of passion set on a sinister Yorkshire chicken farm in 1950s England. The film follows the turbulent romance between two farmyard chickens, Rocky and Ginger, who yearn for freedom and plan a daring “prisoner of war” style escape.

PATS Studio One

Admission Free

Wednesday 4 March 1:10pm

## Lunchtime Recital

CROSER HUGHES COMPETITION

We are always delighted to showcase our talented students, but the annual Croser-Hughes chamber music competition promises to be a feast! All entries must feature a keyboard instrument and that is the only real restriction. There will be a guest adjudicator (tbc) for this competition.

Venue to be  
confirmed

Admission Free

Wednesday 4 March 4pm-6pm

## Shakespeare in Practice

RESEARCH SEMINAR

With **Jacquelyn Bessell** (Surrey) and **Matt Wagner**. Bringing together a number of esteemed theatre and movement directors, this panel event will address the specific contribution of practice and practitioners to our knowledge of Shakespeare.

Austin Pearce 1  
University of  
Surrey

£3  
Free to SSS members and  
students

Wednesday 4 March 7:30pm



## Laurence Edwards FRBS

SURREY SCULPTURE SOCIETY LECTURE

Sculptor Laurence Edwards' work is of the figure and often rough gashed and primitive making them feel threatening and intensely physical – amplified by their monumentality. He graduated from the Royal College of Art and was awarded the Henry Moore Bursary, the Angeloni Prize for bronze casting and an Intach Travelling Scholarship. Post-graduation Edwards returned to his native Suffolk where he established a bronze foundry and works to this day.



The Ivy Arts Centre

£12  
£10 conc

Wednesday 4 – Saturday 7 March

## Blue Stockings

by Jessica Swale  
GSA 2<sup>nd</sup> YEAR BA ACTING

Girton is the first college in Britain to admit women. The girls risk their reputations for their education. They study ferociously and match their male peers grade for grade. *Blue Stockings* follows the tumultuous year of 1896, in their fight to change the history of education. Directed by Sarah Stephenson.

“Each scene is calculated to make a point, swale writers with palpable vigour and leaves you astonished at the prejudices these educational pioneers had to overcome” *The Guardian*

Presented by arrangement with Nick Hern Books





# MARCH



Lewis Elton Gallery

Monday 9 March 5:30pm – 7:30pm

## The Player-Piano and Pianola

PRIVATE VIEW

The Lewis Elton Gallery will be immersed in the magical world of the pianola and reproducing piano. The exhibition will run until Tuesday 17 March. Full details on p 40

**PATS & Teaching Block, University of Surrey** (rooms tbc)

Booking essential.

Register via the Box Office – booking opens 16 January

Wednesday 11 March 10:30am – 5pm

## Compositional Sketches Study Day

This colloquium offers a snapshot of some of the issues surrounding the study of compositional sketches and creativity in general. Two composers, **Dr Tom Armstrong** (University of Surrey) and **Professor Robert Saxton** (University of Oxford) explain their compositional processes through a commentary on their own sketches, while two musicologists, **Dr Chris Mark** (University of Surrey) and **Michael Taylor** (Trinity College Dublin), assess what can be learnt from the sketches of two composers who have drawn heavily on constructivist techniques, **Harrison Birtwistle** and **Roger Smalley**. Trumpeter **Dr Simon Desbruslais** (University of Hull), who has recently recorded new works by both **Robert Saxton** and **Tom Armstrong**, will give a lunchtime recital of music by some of the featured composers.

Refreshments will be provided.

PATS Studio One

Admission Free

**Rik Medlik Building, University of Surrey**

£5  
£2 students / U18  
CERT PG

The Mill Studio

£13  
£6 students  
yvonne.arnaud.co.uk

Wednesday 11 March 1:10pm

## Lunchtime Recital

Student musicians perform – the programme features a wide array of instruments and styles.

Thursday 12 March 7:30pm

## Wallace and Gromit: The Curse of the Were-Rabbit

FILM SCREENING – AARDMAN ANIMATION SERIES

Wallace and his loyal dog, Gromit, set out to discover the mystery behind the garden sabotage that plagues their village and threatens the annual giant vegetable growing contest.

Thursday 12 – Saturday 14 March



13

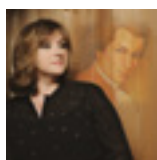
by Mike Bartlett  
GSA 2<sup>nd</sup> YEAR BA ACTING

'Hip, incisive... 13 demands to be seen' *Time Out*

An urgent and forceful play which premiered at the National Theatre, 13 asks is there is any alternative to free-market capitalism and unbridled military adventurism? Directed by Sean McNamara.

Presented by arrangement with Nick Hern Books

**GSA**  
est. 1935  
UNIVERSITY OF SURREY



# Guildford International Music Festival

A CELEBRATION OF LIVE MUSIC

**Friday 13 March – Sunday 22 March**

A celebration of live music with over 50 events spanning 10 days in and around Guildford, with many events in some of the area's most unique venues. From jazz at Loseley Park with Claire Martin and Joe Stilgoe to Japanese Drumming with the Mugenkyo Taiko Drummers at the Electric Theatre, the eclectic line up promises something for everyone.

For further details please visit the website [guildfordinternationalmusicfestival.co.uk](http://guildfordinternationalmusicfestival.co.uk) or [surrey.ac.uk/arts](http://surrey.ac.uk/arts)

# MARCH

The Ivy Arts Centre

Wednesday 18 March 5pm & 8pm

£12  
£10 conc

May contain adult  
content/language



## GSA Acting Showcase 2015

3<sup>rd</sup> YEAR BA ACTORS

An opportunity to see the work of students in this unique showcase prior to a performance for industry professionals in London's West End later that week. Directed by Dan Coleman

The Ivy Arts Centre  
Studio 2

Wednesday 18 – Saturday 21 March

£12  
£10 conc



## How to Disappear Completely and Never Be Found

by Finn Kennedy  
GSA 2<sup>nd</sup> YEAR BA ACTORS

"Just occasionally you find a piece of new writing that restores your confidence in the future of theatre... an exciting, exhilarating, extremely funny and deeply distressing parable of contemporary consumerism. This is as good as theatre gets." *The Stage*

Winner of the 2006 Arts Council *John Whiting Award* for New Theatre Writing *How To Disappear...* follows one man's desperate attempts to buck the system, and asks what really makes us who we are in the 21st century. Directed by Michael Toumey.

Presented by arrangement with Nick Hern Books



PATS Studio One

£10  
£8 conc  
£2 students / U18

Tuesday 24 March 7:30pm



## Harmless Funk

Harmless Funk are a collective of some of the finest musicians working in and around London. While they play a polished brand of classic funk from the 70s and 80s, the 5-piece deliver a set filled with dynamic ensemble work and flashes of cutting-edge individual virtuosity.

PATS Studio One

Admission Free

Wednesday 25 March 1:10pm

## Lunchtime Recital

A recital featuring student performers.

PATS Studio One

Admission Free

Wednesday 25 March 7:30pm

## ENSEMBLES CONCERT

A stimulating evening of music featuring a wide range of University ensembles and choirs performing a varied repertoire.





## On The Town

GSA 2nd YEAR BA MUSICAL THEATRE

The Ivy Arts Centre **Wednesday 25 – Sunday 29 March**

£12  
£10 conc

Music: Leonard Bernstein  
Book and Lyrics: Betty Comden, Adolph Green  
Based on a concept by Jerome Robbins

'Takes your breath away' *New York Times*

'When did you last see a musical that made you want to shout with joy? On The Town is everything a great show should be.' *Wall Street Journal*

**GSA**  
est. 1935  
UNIVERSITY OF SURREY

1944 World War 2 and American three sailors have 24 hours shore leave in New York City. Armed with a guide book and the knowledge that Manhattan girls are the prettiest in the world they waste no time checking out the sights including the elusive Miss Turnstiles poster girl! Seventy years after it premiered on Broadway and, following a hugely successful New York revival in 2014, this witty show with its extraordinarily sophisticated score and leaping spinning kicking dances is back!

Presented by arrangement with Boosey and Hawkes Music Publishers Ltd

Rik Medlik  
Building, Stag Hill  
Campus

£5  
£2 students / U18

CERT U

Thursday 26 March 7:30pm



## Alice in Wonderland

FILM SCREENING – TIM BURTON SERIES

From Walt Disney Pictures and visionary director Tim Burton comes an epic 3D fantasy adventure *Alice in Wonderland*, a magical and imaginative twist on Lewis Carroll's beloved *Alice's Adventures in Wonderland* (1865) and *Through the Looking-Glass* (1871) with stunning, avant-garde visuals and the most charismatic characters in literary history.

The Ivy Arts Centre

Ticket Price TBC -  
please check the  
website

Thursday 16 April & Friday 17 April

## The State We're In: Directions In Researching Post-1900 British Music

The last thirty years have witnessed a surge of interest in the study of British music since 1900. The concept of 'British modernism'; the role of theory and analysis versus cultural and reception history; the question of the cultural value of indigenous music; and issues of national musical identities in the face of radical change internationally, a declining Empire, an increasingly multicultural society, and strengthening nationalisms within the constituent British nations, have proved to be major – and contested – themes.

Convened by **Dr Joanna Bullivant** (Nottingham) and **Dr Christopher Mark** (Surrey), this conference is intended as the first step in the establishment of a new research network in this area of study.

PATS Studio One

£10  
£8 conc  
£2 students / U18

Thursday 16 April 7:30pm

## A Concert Of English Song

Justin Vickers (tenor)  
Lucy Walker (piano)

A wide-ranging recital of songs featuring some of the finest British practitioners of the art: Ivor Gurney, Priaulx Rainier, Benjamin Britten, Michael Tippett, Judith Weir, and Harrison Birtwistle. The distinguished performers are also notable scholars of British music.

Founders Studio,  
GSA, University of  
Surrey

Ticket Price TBC -  
please check the  
website

Saturday 18 April 10am

## Rudolf Laban and Warren Lamb

Shaping Dynamics For Theatre And Dance:  
Symposium On Movement And Physical Behaviours

This symposium is both an exploration and celebration of the work of Rudolf Laban and Warren Lamb. The day will be a mix of workshops, seminars and lectures exploring the Shape component of Laban Movement Analysis and Warren Lamb's particular development of Movement Pattern Analysis – a method of predicting behaviour from patterns of movement.

Workshops will include the practical application of these concepts to Theatre and Dance in creating character and the day will commemorate Warren Lamb, who died in January 2014, and feature a display of highlights from the Warren Lamb Archive held at the National Resource Centre for Dance (NRCD), University Library.

## PATS Studio One

Admission free –  
retiring collection

Sunday 26 April 2:30pm



### Album for the Young

#### COMMUNITY EVENT

The School of Arts are delighted to be hosting this 'Album for the Young' Day to raise money for Guildford Cathedral as part of the *Make Your Mark* fundraising campaign. Led by Associate Piano Tutor, **Dr Maureen Galea**, students, staff and children from schools across Surrey join forces to perform pieces written for children by Schumann, Kullak, Tchaikovsky, Shostakovich, Casella, Gubaidulina and Bartók.



## PATS Studio One

Admission Free

Wednesday 29 April 1:10pm



### Lunchtime Recital

Student musicians perform – the programme features a wide array of instruments and styles.

## PATS Studio One

Admission Free

Wednesday 29 April 3pm

### Graham Fitkin

#### GUEST LECTURE

We welcome this widely performed and recorded composer who will give a lecture outlining his compositional process and technique – focussing on some of his recent works. This event is suited to students of composition, and members of the public are welcome.

## The Ivy Arts Centre

Admission Free

Wednesday 29 April 4pm-7pm

### Composers' Careers

#### RESEARCH SEMINAR

Judith Weir CBE  
Graham Fitkin  
Cheryl Frances-Hoad  
Dr Victoria Armstrong



4.30-6.00 Panel

6.00-6.30 Questions from the floor

6.30-7.30 Drinks Reception

The distinguished composer, **Judith Weir** CBE, the first woman appointed to the position of Master of the Queen's Music, will visit the School of Arts and together with fellow composers **Graham Fitkin** and **Cheryl Frances-Hoad**, will take part in a panel on 'Composers' Careers' chaired by **Dr Victoria Armstrong** (St Mary's University Twickenham). The panel will discuss a range of topics, including the panellists' own musical educations and careers, the imperatives and challenges they have faced, the relevance (or otherwise) of school-based music, and issues for music in UK Higher Education.

The School of Arts is delighted to be playing host to four such important figures on the contemporary music scene in the UK and internationally. The event promises to be inspiring to visitors and students alike.



# MAY

## PATS Dance Studio

£8  
£6 conc  
£2 students / U18

Wednesday 29 April 7:30pm



### Sounds & Guts

#### TENDER BUTTONS

Why is solitude 'good' and loneliness bad, and is it possible to have one without the other? In the Seventies, 17% of the UK's population lived alone. Today it is 31%.

Tender Buttons will take you on a theatrical tour through a labyrinth of archive film, field recordings and collected stories of solitude.

Sounds & Guts is a playful tale about the fine line between being alone and being lonely.

Sounds & Guts is a co-production with Queens Hall Arts Centre and is supported by Arts Council England.



## Rik Medlik

Building, Stag Hill Campus

£5  
£2 students / U18  
CERT 12

Thursday 30 April 7:30pm

### Chocolat

#### FILM SCREENING – FOOD ON FILM SERIES

When a stranger called Vianne comes to town with her daughter and opens a chocolate shop, the usually reserved locals abandon themselves to chocolate temptation. But not everyone embraces her efforts, especially Reynaud, the self appointed leader of the town and a firm traditionalist. Fearing that Vianne is causing disruption in the town, he pits himself against her and forbids anyone from entering her store, hoping to run her out of town.

## PATS Studio One

Admission Free

Wednesday 6 May 1:10pm

### Lunchtime Recital

Student musicians perform – the programme features a wide array of instruments and styles.

## TB6

Wednesday 6 May 4pm

### Maaïke Bleeker

#### RESEARCH SEMINAR

Professor and Chair of Theatre Studies at Utrecht University, **Maaïke Bleeker** is President of Performance Studies international, Member of the International Advisory Board of Maska (Ljubljana) and of *Inflexions: A Journal of Research-Creation* (Montreal).

## The Ivy Arts Centre

£8  
£6 conc  
£2 students

Wednesday 6 May 7:30pm



### shall i sit here | c - monologues

#### RAHEL VONMOOS DOUBLE BILL

Inspired by the Swiss poet Lisa Elsässer, *shall i sit here* is a solo piece devised and performed by Rahel Vonmoos. The work is a layered presentation of recorded and live performance, integrating film and text, the use of light, reflection and shadow and the physicality and simplicity of the performing body. *shall i sit here* has been performed at Tanzhaus Zurch and Tanzzewir Festival, Spring Loaded Festival in London and Trinity Laban. *c - monologues* is a trio about language, words and their meaning, inspired by the feminist re-writing of Cassandra by German author Christa Wolf. *c - monologues* is performed by Jindeck Park, Luke Birch and Rahel Vonmoos.



# Nikolai Demidenko

## PIANO RECITAL

**PATS Studio One**

**Sunday 10 May 3pm**

£12  
£10 conc  
£2 students / U18

Nikolai Demidenko's passionate virtuosity and musicianship has brought him worldwide recognition. We are delighted to welcome back this highly accomplished performer.

GLINKA	Notturmo in F minor La Separation
KALINNIKOV	Notturmo in F sharp minor
BLUMENFELD	Notturmo - Fantasia in E major Op 20
CHOPIN	Nocturne in C minor, Op. 48 No.1
CHOPIN	Nocturne in F sharp minor Op 48 No 2
CHOPIN	Nocturne in E flat major Op 55 No 2
CHOPIN	Nocturne in C sharp minor Op post
LISZT	Ballade No 1 in D flat major
LISZT	Sonata in B minor

## PATS Studio One

Admission Free

Wednesday 13 May 1:10pm

### Paul Stanway Brass Competition

#### LUNCHTIME RECITAL

We are proud to have a really strong showing of young brass players, and they will be competing for the prestigious Paul Stanway Prize. Open to all brass players (any instrument), this competition will be adjudicated by a distinguished guest (to be confirmed).

## TB6

Teaching Block,  
Stag Hill Campus,  
University of Surrey

Admission Free

Wednesday 13 May 4pm

### The Birth and Death of the Cool: Jazz's Screen Afflictions

#### RESEARCH SEMINAR

Led by **Dr Jeremy Barham**, this seminar explores the changing fortunes of jazz on screen, from being the uninflected popular music of the day, through embodying sleaze, corruption and a restrained and/or criminal sense of 'cool', to becoming the (sometimes ironic) historical and geographical marker of a vanished era and aesthetic. Another, perhaps less explicable but nevertheless widespread, part of the music's screen appropriation has been its embodiment of dysfunctionality, alienation or disorder sometimes tipping over into madness. With reference to examples spanning the 1960s to the present day, this seminar traces the contours of such screen characterization and typecasting, and interrogates the ongoing viability of employing jazz as a semantically rich musical resource with which to score the moving image.

## PATS Studio One

Wednesday 13 May 7:30pm

### Ensembles Concert

A stimulating evening of music featuring a wide range of student ensembles and choirs.

## Austin Pearce 1

£3

Free to SSS members  
and students

Wednesday 13 May 7:30pm



### Patricia Volk MRBS

#### SURREY SCULPTURE SOCIETY LECTURE

Patricia Volk has been creating distinctive prize-winning ceramic sculpture for over twenty years in a style uniquely her own. Juxtapositions of pure shape and colour portray contradictions of power and fragility, stability and precariousness, reflecting the relationships between human beings - partnerships between the strong and the weak, the delicate and the robust. She is an associate member of the Royal Society of British Sculptors and has exhibited extensively both nationally and internationally.





# MAY

Rik Medlik  
Building, Stag Hill  
Campus

£5  
£2 students / U18

CERT 15

Thursday 14 May 7:30pm



## Chef

### FILM SCREENING – FOOD ON FILM SERIES

Written by, directed by, produced by and starring Jon Favreau - *Chef* features an all-star cast including Sofia Vergara, Scarlett Johansson, John Leguizamo, Bobby Cannavale, Dustin Hoffman, Oliver Platt, Robert Downey Jr. and young actor Emjay Anthony. When Chef Carl Casper suddenly quits his job at a prominent Los Angeles restaurant after refusing to compromise his creative integrity for its controlling owner, he is left to figure out what's next. Taking to the road, Chef Carl goes back to his roots to reignite his passion for the kitchen - and zest for life and love.

PATS Studio One

Admission Free

Friday 15 May 5:30pm

## Niall Squire Guitar Competition

### RUSH HOUR CONCERT

We are indeed lucky to have a large number of exceptional guitar students at Surrey. Hear them playing their socks off in this wonderful competition! Entry is open specifically to players of electric instruments, both guitar and bass.

St Saviour's Church

Woodbridge Road,  
Guildford GU1 4QD

£12  
£10 conc  
Free students

Saturday 16 May 7:30pm



## University Orchestra

The University Orchestra returns to St Saviour's to perform a stunning programme featuring The Firebird Suite by Stravinsky, one of the early 20th century's most exciting and dynamic composers. The full programme will be listed on the website.

Lewis Elton Gallery

Admission Free

Monday 18 May 6pm-8pm

## Surrey Artists' Open Studios

### TASTER EXHIBITION PRIVATE VIEW

Surrey Artists' Open Studios is an annual event about visiting studios, meeting artists and makers, viewing demonstrations, taking part in workshops and meeting fellow enthusiasts. The exhibition gives a taste of what you can expect to find in the Open Studios and an opportunity to buy the work of local artists. The exhibition continues until Thursday 4 June. Details on page 45

[surreyopenstudios.org.uk](http://surreyopenstudios.org.uk)

saos  
surrey artists open studios

# MAY | JUNE

## PATS Studio One

Tue 19, Thu 21 and Fri 22 May 5:30pm

Admission Free

### Composition Concerts

RUSH HOUR RECITALS

## PATS Studio One

Wednesday 20 May 1:10pm

Admission Free

### Benefactors' Concert

The University is profoundly grateful to all individuals, Trusts and companies who support prizes and scholarships. We are proud to be associated with a number of benefactors, and proud of the achievements of the students they support. This concert will provide a showcase for a number of exceptionally talented students, all of whom have won awards and scholarships in performance in 2014-15, and we hope that many of the benefactors will also be in attendance. This promises to be a very special concert indeed.

Venue for discussion to be confirmed.

## PATS Dance Studio

(Evening Performance)

Admission Free

Wednesday 20 May

### Hearing Taiwanese Dance & Music

TAIWAN WEEK III

**4pm** Roundtable Discussion - Speakers: Artistic Director Chang Ting-Ting, Dr Shantel Ehrenberg (Surrey), Dr Tseng Shu-wei.

**6pm** Evening Performance of Taiwanese Dance, Music & Puppetry.

From Artistic Director Ting-Ting Chang, T.T.C.Dance explores the delicate interaction between movement, feelings, and imagination, a continuous experiment on the fusion of Eastern and Western human aesthetics and dance theatre through interdisciplinary collaboration. Followed by Poetry as Music in Taiwanese Puppetry.

Full details on [www.surrey.ac.uk/arts](http://www.surrey.ac.uk/arts)



## Guildford

### Cathedral

Admission Free

Wednesday 27 May 1:10pm

### Lunchtime Recital

Weekly recitals featuring student performers playing in a wide range of styles.

## Rik Medlik

### Building, Stag Hill Campus

£5

£2 students / U18

Thursday 28 May 7:30pm

### Film Screening

Film to be announced. Please check the website for updated information.

## PATS Studio One

Admission Free

Friday 29 May 7:30pm

### Joyce Dixey Competition Final

Adjudicator Dominic Muldowney

For composers at Surrey, this is the musical highlight of the year. Open to UG and PG composers and performed entirely by Surrey students, the Joyce Dixey Competition showcases the diverse range of musical styles in which our students work and which makes Surrey such a sought-after place to study composition.

We are delighted that British composer **Dominic Muldowney** will adjudicate this year – Dominic is a highly regarded and successful composer, whose recent commissions include *Leaves on the Line*, premiered at BBC Proms by The King's Singers, a *Second Piano Concerto*, premiered to much acclaim by pianist Angela Hewitt, with Leonard Slatkin and the BBC Symphony Orchestra, and a *Serenade for Horn and Strings* written for Richard Watkins and The Goldberg Ensemble. Dominic was composer in residence at the National Theatre from 1981 - 1997 and has composed numerous scores for Film and TV including the music for *Sharpe*, 1984 and *Wallander*.



## PATS Studio One

Wednesday 3 June 1:10pm

Admission Free

### Lunchtime Recital

Weekly recitals featuring student performers playing in a wide range of styles.

## Lewis Elton Gallery

Tuesday 9 June 6pm-8pm

### Theory – Design – Practice

#### FINAL YEAR BA STUDENTS' EXHIBITION

This studio explores the relationship between Theory-Design-Practice, a third year module that explores rhythms in writing, philosophy in practice and the bringing together of praxis and design. Continues until 12 June. Full details on page 46.

## PATS Studio One

Wednesday 10 June 1:10pm

Admission Free

### Lunchtime Recital

Weekly recitals featuring student performers playing in a wide range of styles.

## Rik Medlik

Building, Stag Hill Campus

£5

£2 students / U18

Thursday 11 June 7:30pm

### Film Screening

Film to be announced. Please check the website for updated information.

## PATS Studio One

Wednesday 17 June 1:10pm

Admission Free

### Lunchtime Recital

Lunchtime recital featuring Postgraduate student performers.

## The Ivy Arts Centre

Tuesday 30 June

£6

£4 conc

Free students / U18

### Bloodlines

'...is the human body a soul-less, self-less object at the mercy of automatic internal processes...or is it a precious vessel containing a unique individual...?'  
*Sian Ede, Art & Science*

*Bloodlines* is a unique work – an “augmented lecture” - part medical lecture, part dance and music performance, and is itself the result of a collaboration between a musician, dramatist, choreographer and medical practitioner. This project was inspired by its makers’ personal experience of Acute Lymphoblastic Leukaemia (which the composer **Milton Mermikides** developed in 2004) and its treatment through intensive chemotherapy, radiotherapy and a bone marrow transplant (donated by his sister **Alex Mermikides**, who is directing the performance).

[bloodlinesproject.com](http://bloodlinesproject.com)

## Lewis Elton Gallery

Tuesday 14 July 6pm-8pm

Admission Free

### Tre Artisti Toscani: Franco Mauro Franchi, Mario Minarini & Bruno Paoli

#### PRIVATE VIEW

Curated by University of Surrey Alumni Luciano Cassara and Nigel Taylor, an exhibition of the work of three Tuscan artists. The exhibition continues until Thursday 27 August. Full details on p.48

## The Ivy Arts Centre

Saturday 18 July 10am - late

Admission Free

### Practice as Research Festival

Talks, workshops and performances showcasing ‘practice as research’ by staff in the Department of Theatre and Dance, including GSA. The Festival will be a celebration and interrogation of how making theatre, musical theatre and dance operate as ways of doing research, asking questions and as forms of thinking in their own right.



# Exhibitions & Installations

## Lewis Elton Gallery

Open Mon-Fri  
10am-5pm and  
weekends by  
appointment.  
Closed Bank  
Holidays.

Admission Free

## Lewis Elton Gallery

Open Mon-Fri  
10am-5pm and  
weekends by  
appointment.  
Closed Bank  
Holidays.

Admission Free

Monday 9 February – Thursday 5 March

### When the Night Blossoms - All About Life

PRIVATE VIEW 9 Feb 5.30pm-7.30pm

An exhibition of photographs by Joan Huang and drawings by Klara Huang. The exhibition continues until Thursday 5 March.

[surrey.ac.uk/politics/taiwan-project](http://surrey.ac.uk/politics/taiwan-project)



Mon 9 – Tue 17 March



### The Player-Piano and Pianola

PRIVATE VIEW Monday 9 March 5.30pm-7.30pm

Denis Hall and Rex Lawson of The Pianola Institute with Professor Clive Williamson (Director of Performance) and Dr Georgia Volioti (Lecturer) of the Department of Music and Media, University of Surrey.

The Lewis Elton Gallery will be immersed in the magical world of the pianola and reproducing piano. Recording of piano rolls was the very first attempt to digitise music, and the results are frequently breathtaking in their immediacy and intimacy. Come and see how the recordings were made, view materials related to the marketing and advertising of piano rolls and player-pianos, and hear greats from the world of pianism playing right in front of your ears and eyes.



## Lewis Elton Gallery

Open Mon-Fri  
10am-5pm and  
weekends by  
appointment.  
Closed Bank  
Holidays.

Admission Free

Thursday 19 March – Tuesday 31 March



Image (c) Christian Kipp

### Remake

Florence Peake

PERFORMANCE AND INSTALLATION Thu 19 March across campus, starting at the Lewis Elton Gallery (timings and route will be available on the website)

*Remake* is a durational work performed over 3 hours. It engages the performers in a continual process of framing themselves, the audience and the features and details of life in the environment with 3 metre long sticks. As the performers move through the campus they build and construct sculptural scenarios reminiscent of minimalist art. It lightly references seminal works from this canon such as Dan Flavin's neon strip pieces. There is a playful poignancy as it settles into its final destination in the Lewis Elton Gallery where it will remain for the duration of the exhibition as an installation work. An edited film of the performance becomes an additional exhibit.

[florencepeake.com](http://florencepeake.com)





### Lewis Elton Gallery

Open Mon-Fri  
10am-5pm and  
weekends by  
appointment.  
Closed Bank  
Holidays.

Admission Free

Monday 27 April – Friday 1 May

### Open Gallery Installation Explorations

COORDINATED BY DR MATTHEW SANSOM

Students and staff from the Department of Music & Media will be working in the Lewis Elton Gallery as part of the MMus programme's Creative Practice pathway. Visitors are welcome to drop in any time to discuss the work as it progresses. **Throughout Friday 1 May there will be an informal showing of the projects developed during the week.**

Matthew Sansom is an artist working across a variety of media and contexts – including sound, video, sculpture, installation, performance and musical composition. He holds a doctorate in free improvisation and is Senior Lecturer at the University of Surrey (UK) teaching computer-based creative practice.



### Lewis Elton Gallery

Open Mon-Fri  
10am-5pm and  
weekends by  
appointment.  
Closed Bank  
Holidays.

Admission Free

Thursday 7 – Wednesday 13 May



### Hidden Music

PRIVATE VIEW Thursday 7 May 6pm – 8pm

Surrey Collaborators include  
Professor Debra Skene (FHMS)  
Dr Simon Park (Department of Microbial and  
Cellular Sciences)  
Yurubi Rosales Suarez & Professor Paul Krause  
(Department of Computing)

*Hidden Music* is an exhibition of works by Milton Mermikides in the field of data sonification: the translation of data into musical compositions. Listen to the inherent musical patterns in sleep cycles, blood cell populations, microbacterial DNA, tree-ring cycles, the shape of the human skull, MRI scans, tidal waves, planetary orbits and many other biological and physical phenomena. These works (dating from 2004-2014) have been exhibited internationally (including the Science Museum and Royal College of Surgeons), featured in the *Times Higher Education Supplement* and are the result of collaborations in a wide range of disciplines.

Milton Mermikides: [miltonline.com](http://miltonline.com)

More on the works: [miltonline.com/datasonification](http://miltonline.com/datasonification)



*Veduta di Firenze* by Mario Minarini  
Tre Artisti Toscani: Franco Mauro Franchi, Mario Minarini & Bruno Paoli  
For event details see page 48

### Lewis Elton Gallery

Open Mon-Fri  
10am-5pm and  
weekends by  
appointment.  
Closed Bank  
Holidays.

Admission Free

Monday 18 May – Thursday 4 June



*Seascape Cuff Bracelets* by Iona Mackenzie-Laycock

### Surrey Artists' Open Studios Taster Exhibition

PRIVATE VIEW Monday 18 May 6 – 8pm

The exhibition continues until Thursday 4 June

Surrey Artists' Open Studios is an annual event all about visiting studios, meeting artists and makers, viewing demonstrations, taking part in workshops and meeting fellow enthusiasts. Previous years have seen up to 40 exhibitors display their work in the Lewis Elton Gallery. The exhibition gives a taste of what you can expect to find in the Open Studios and an opportunity to buy the work of local artists.

[surreyopenstudios.org.uk](http://surreyopenstudios.org.uk)

**saos**  
surrey artists open studios



*Belgian Barge* by Carol Orwin





## Lewis Elton Gallery

Open Mon-Fri  
10am-5pm and  
weekends by  
appointment.  
Closed Bank  
Holidays.

Admission Free

Tuesday 9 June - Friday 12 June



Detail from *Painting with Steam* by Nathan Coetzee.  
Photo (c) David Hockham.

### Theory-Design-Practice

Third Year School of Arts Students

PRIVATE VIEW Tuesday 9 June 6pm – 8pm

The exhibition continues until Friday 12 June

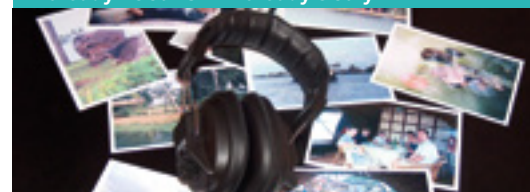
This studio explores the relationship between Theory-Design-Practice, a third year module that explores rhythms in writing, philosophy in practice and the bringing together of praxis and design. Students may take either 'Theory,' 'Design' or 'Practice' as a starting point to expand their thinking, explore their own creativity and find out what excites them. This exhibition houses only some of the work created by students, with other designs appearing in productions across campus.

## Lewis Elton Gallery

Open Mon-Fri  
10am-5pm and  
weekends by  
appointment.  
Closed Bank  
Holidays.

Admission Free

Thursday 18 June – Thursday 9 July



### Fast Design – Slow Innovation

Audiophotography ten years on

PRIVATE VIEW Date to be confirmed – please  
check the website for details

Professor David Frohlich & Dr Matthew Sansom

Usual opening hours plus OPEN DAY Sat 4 July,  
10am – 4pm

The exhibition continues until Thu 9 July

Many of us are used to capturing experiences and memories in photographs and video. But what of the middle ground in between? What if our cameras and smart phones captured photo sequences with sound, and saved them as simple 'audiophotographs' or audiovisual slideshows? And what if those sounds could be played back from 'audiopaper' photographs as well as screen-based devices? These possibilities are illustrated in this exhibition, through material recorded by ordinary families, amateur photographers and multimedia artists. The work is based on research by David Frohlich and colleagues at HP Labs and the University of Surrey into the practice of audiophotography and how to support it, and coincides with a new book\* reviewing 10 years of developments in the field.

\*Frohlich D.M. (2015) *Fast Design, Slow Innovation: Audiophotography Ten Years On*. Springer, forthcoming.

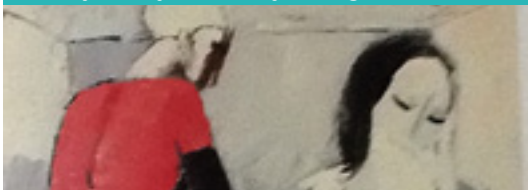


### Lewis Elton Gallery

Open Mon-Fri  
10am-5pm and  
weekends by  
appointment.  
Closed Bank  
Holidays.

Admission Free

Tuesday 14 July – Thursday 27 August



### Tre Artisti Toscani

Franco Mauro Franchi, Mario Minarini & Bruno Paoli

Curated by University of Surrey Alumni

Luciano Cassara and Nigel Taylor

PRIVATE VIEW Tue 14 July 6pm - 8pm

*Veduta di Firenze* by Mario Minarini

*Melanzone, Peperone, Aglio* by Franco Mauro Franchi

*Il Manichino* by Bruno Paoli

The exhibition continues until Thursday 27 August

**Mario Minarini** was trained at the Art Institute in his native Florence. He went on to study with the maestro Alessandro Berti at the Accademia di Belle Arte di Firenze. In 2008 Minarini was awarded the Fiorini d'Argento ex-aequo in Florence.

**Franco Mauro Franchi** is best known for his playfully voluptuous female figures in paintings and ceramics. He lives in Carrara where he teaches at the city's Academy.

**Bruno Paoli** was born in Florence in 1915. Paoli taught at the Accademia di Belle Arte di Firenze. His work has been exhibited throughout Italy including the Palazzo Strozzi and the Palazzo Vecchio (Medici Palace) in Florence.

### Lewis Elton Gallery

Open Mon-Fri  
10am-5pm and  
weekends by  
appointment.  
Closed Bank  
Holidays.

Admission Free

Autumn 2015



### In a Different Light

UNIVERSITY OF SURREY STAFF & STUDENT EXHIBITION

As 2015 celebrates The International Year of Light, Surrey staff and students are invited to participate in this exhibition. Taking 'light' as a cohesive but optional theme, interpreted as broadly as imagination allows in a variety of media from sculpture to paintings, photography, film or multi-media. Further details and how to enter will be available in due course or email [arts@surrey.ac.uk](mailto:arts@surrey.ac.uk).



# Classes & Workshops

The School of Arts offers mixed ability ten-week courses in Painting and Drawing and Pottery. Suitable for both complete beginners and more advanced students (18 years and over). There are also opportunities to participate in a range of clubs and activities coordinated by the School of Arts, the Wellbeing Centre and the Students Union, including a Book Circle, Poetry Readings, Creative Writers, Photography Society, MadSoc TV, MadSoc Amateur Drama/Theatre Soc and dance classes.

## Undercroft of Speirs Residence, Battersea Court

Full £120  
Staff £110  
OAP £90  
Students and  
unwaged £70

Tutor:  
Karen Watson

### Pottery Classes



Mon 19 Jan – Mon 23 Mar  
6pm – 8pm

Wed 21 Jan – Wed 25 Mar  
6pm – 8pm

Mon 13 Apr – Mon 15 Jun (Bank Holidays 4 & 25  
May, classes will take place on Tue 5 and 26 May)  
6pm – 8pm

Wed 15 Apr – Wed 17 Jun  
6pm – 8pm

### Lecture Theatre H

Full £105  
Staff £95  
OAP £85  
Students and  
unwaged £65

(including materials)

Tutors:  
Annie Boisseau  
(Wednesday)

William Lawrence  
(Friday)

### Painting and Drawing Classes



Wed 21 Jan – Wed 25 Mar  
6pm – 8pm

Wed 15 Apr – Wed 17 Jun  
6pm – 8pm

Fri 23 Jan – Fri 27 Mar  
6pm – 8pm

Fri 17 Apr – Fri 19 Jun  
6pm – 8pm

Book for Classes via the Ivy Arts Centre Box Office -  
details overleaf.



# Booking information

Booking for events opens Monday 19 January. Booking for Art Classes opens 5 January. Tickets and Information for all events are available at the Ivy Arts Centre Box Office - details below.

Tickets for all events for which there is a charge (excluding GSA shows) are also available from the Tourist Information Centre in the centre of Guildford.

## ONLINE

[surrey.ac.uk/arts](http://surrey.ac.uk/arts)  
[visitguildford.com](http://visitguildford.com)

## BY TELEPHONE

01483 686876 (Ivy Arts Centre)  
01483 444334 (Guildford Tourist Information Centre)

Tickets reserved by telephone will be held for 3 working days, unless purchased by Visa/Mastercard.

## IN PERSON

The Ivy Arts Centre Box Office, Stag Hill Campus, University of Surrey, Guildford GU2 7XH

Open Monday to Friday 10am – 6pm, and until curtain up on performance days. Please note there are reduced opening hours and closed periods over Christmas. Please call the Box Office for further information.

Guildford Tourist Information Centre, 155 High Street, Guildford GU1 3AJ

Open Monday to Saturday 9:30am - 5pm.

Advance booking is advised for all events.

## SIGN UP FOR DETAILS

Sign up to receive updates on Arts events at the University of Surrey

[surrey.ac.uk/arts](http://surrey.ac.uk/arts)  
[facebook.com/universityofsurreyarts](https://facebook.com/universityofsurreyarts)  
[twitter.com/uniofsurreyarts](https://twitter.com/uniofsurreyarts)

## TICKET PRICES

For ticket prices check the individual event page.

## LATECOMERS

Latecomers will be admitted at an appropriate break at the discretion of the front of house staff. Latecomers cannot be admitted to the Ivy Studio until the interval.

# Travel information

Information on how to get to the University of Surrey Stag Hill Campus. For directions to other venues, please go to [visitguildford.com](http://visitguildford.com)

## BY RAIL

The University is only ten minutes walk from Guildford Station. Alternatively there is a bus that runs frequently from the centre of town via the station to the University.

Guildford is on the main London (Waterloo) to Portsmouth line, with a good service. Train information 08457 484950.

## BY BUS

Arriva bus numbers 17, 27 and 37 run from the Friary Bus Station to the campus. There are several bus stops on campus, which are clearly signposted.

Traveline bus information  
0870 6082608

## BY ROAD

From the A3, take the exit marked with the brown mortar board sign for the University, NOT the Guildford Town Centre exit.

## PARKING ON CAMPUS

Free parking is available in the Main Car Park or Car Park 1, Mon to Fri after 5pm and all day Sat and Sun.

Mon to Fri 9am – 5pm visitors should use the Pay and Display Car Park near the Main Car Park.

## PARKING OFF CAMPUS

Please refer to the venue's website for details of parking nearby.

## ACCESS

All campus venues are accessible by wheelchair. Please inform the box office of your requirements when you are booking in advance to enable us to advise and help you and make your visit enjoyable.

There is an access ramp to the PATS Building. Wheelchair spaces can be provided for all performances. Both the Lewis Elton Gallery and Ivy Arts Centre are on the ground floor and easily accessible.

Disabled parking is available outside the some venues by prior arrangement. Please request this when booking tickets.



# University of Surrey Stag Hill Campus

- Arts Buildings
- Academic Buildings
- Central Facilities
- Accommodation
- Learning Resource Centre
- Car Parks
- Ⓚ Bus stops
- ♿ Disabled Parking
- Railway

- 1 Guildford School of Acting (GSA)
- 2 Ivy Arts Centre and Box Office
- 3 Studios (PATS)
- 4 Lewis Elton Art Gallery, Arts Office
- 5 Austin Pearce Building
- 6 Rik Medlik Building (Management School)
- 7 Lecture Theatre Block
- 8 Senate House
- 9 Wates House
- 10 University Hall
- 11 Nodus
- 12 Pottery Workshop (Speirs Residence, Battersea Court)





 universityofsurreyarts  
 uniofsurreyarts

This information is available  
in large print on request

Detail from *Poppies and Scabious by the Sea* by Becca Clegg