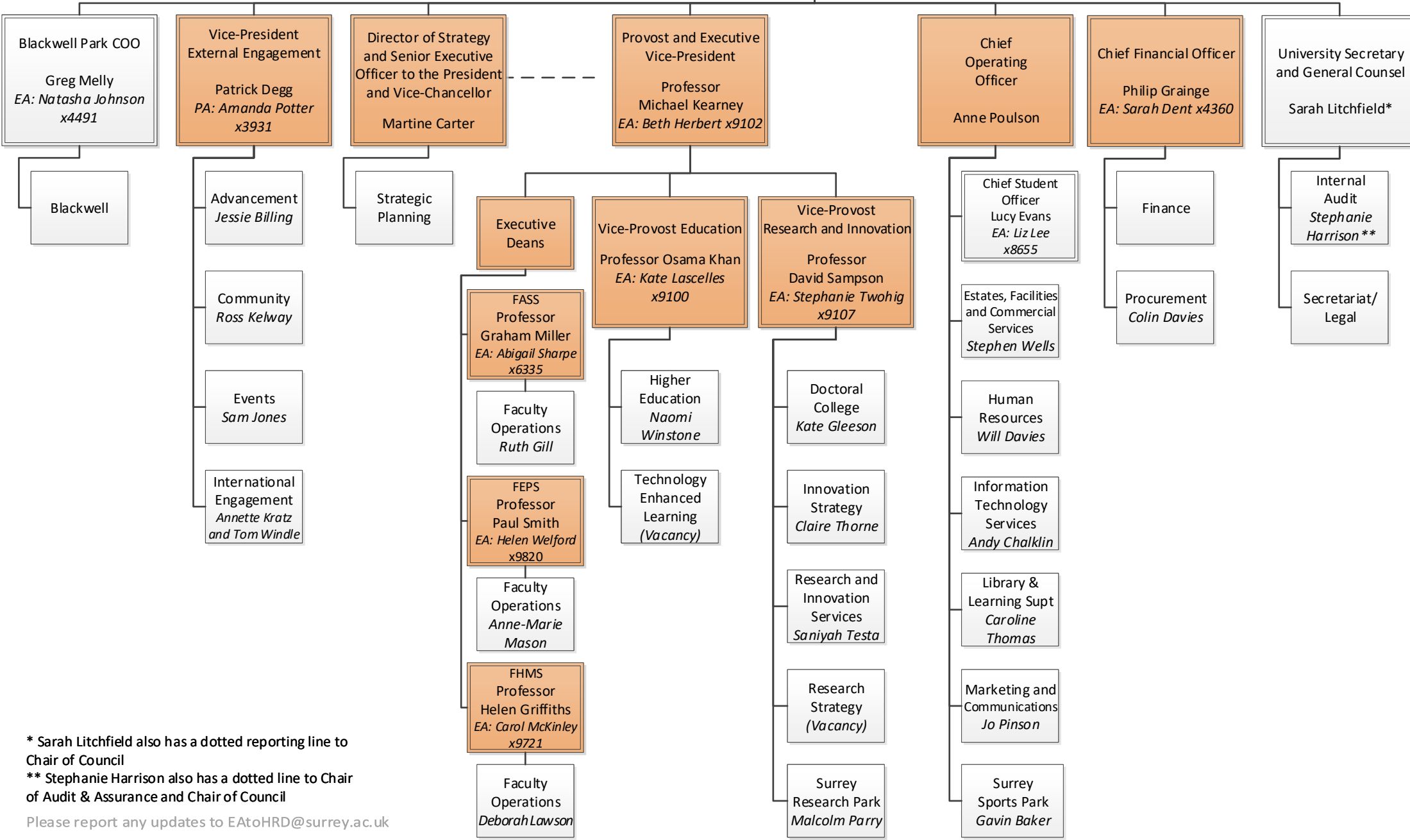


University of Surrey Management Structure

December 2019

= Member of Executive Board

President and Vice-Chancellor
 Professor Max Lu
 EA: Judith Telford
 x9249



* Sarah Litchfield also has a dotted reporting line to Chair of Council

** Stephanie Harrison also has a dotted line to Chair of Audit & Assurance and Chair of Council

Please report any updates to EAtoHRD@surrey.ac.uk