

Measuring up

IMPACT AND CONTRIBUTION

2018 - 2019



Contents

- 3 Foreword from President and Vice-Chancellor Professor Max Lu
- 4 Finance and philanthropy
- 5 Our community
- 6-7 Powerful partnerships
- 8 Raising aspirations and attainment
- 9 Engaging with our community
- 10 Giving back
- 11 Research and impact
- 12-13 Arts, culture and events
- 14-15 Surrey Sports Park
- 16-17 Living together
- 18-19 Environment and sustainability
- 20-21 Innovation and the economy
- 22-23 Reflections

KEY STATS 2018-2019

15,974
FULL-TIME STUDENTS

12,200
STUDENTS LIVING IN GUILDFORD
ON AND OFF CAMPUS

3,144
EMPLOYEES AT THE UNIVERSITY

£1.75BN

GROSS VALUE ADDED (GVA)
GENERATED 2016-17

£1 billion GVA and 11,200 jobs
were in the Borough of Guildford

£1.2 billion GVA and 13,800 jobs were
in the County of Surrey



480

UNITS OF STUDENT ACCOMMODATION
DELIVERED (WITH 670 MORE UNDER
CONSTRUCTION)

2,464

ACTIVE SURREY STUDENT
VOLUNTEERS

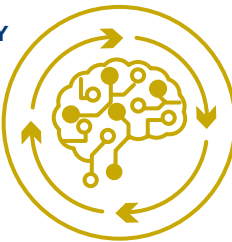


100+

COMMUNITY-FOCUSED
PROJECTS AND INITIATIVES

£2.5M

IN BURSARIES PROVIDED BY THE UNIVERSITY
TO STUDENTS FROM LOWER INCOME
HOUSEHOLDS



18,200

SCHOOL AND COLLEGE STUDENTS
INTERACTED WITH OUR WIDENING
PARTICIPATION AND OUTREACH TEAM

c. 3,000

STUDENTS ON FORMAL
PLACEMENTS ACROSS THE GLOBE

85,130+

PEOPLE ATTENDED PUBLIC EVENTS



£78M

OVERALL RESEARCH AND
INNOVATION INCOME

6%

REDUCTION IN CARBON EMISSIONS

Foreword

FROM THE VICE-CHANCELLOR



Since our foundation in 1966, the University of Surrey has been built on the energy, determination and achievements of our people, and defined by the positive contribution we have made to the communities around us and society at large.

Today, our economic and social impact is substantial, made possible by our partnerships with students, governments, businesses, alumni and local communities. As we become increasingly connected to local, national and global society we aim to work together to tackle the multiple challenges facing humanity in the digital age.

We are driven by an ambition to become a leading research institution making great contributions to the economy, society and the environment. As an institution we are also committed to measuring, adapting and growing that contribution. Since 2014-15, we have reported and reflected on key impacts and achievements of the University community. This year, *Measuring Up 2018-19* looks at sustainability, exploring how Surrey has leveraged our research and innovation, outreach, community activity and everyday practice to address our planet's greatest challenges, and to improve lives across the world. This is what impact means to us.

We are seeing an extraordinary rise in awareness of our natural world and human impact upon it – but even more than this, we are seeing a growing appetite for action on all levels that is reaching across the globe – and even into outer space, where our renowned RemoveDebris satellite is spearheading research into the clear-up of space junk.

The University of Surrey is at the forefront of knowledge and innovation in developing solutions for a healthy planet. On campus, we are changing our relationship with our resources, from recycling to energy and water to transport, student engagement and the curriculum itself. In our community and beyond, the University embraces issues from remote sensing the impact of climate change from outer space, to inspiring local residents to care for their natural environment through citizen science programmes. Our Centre of Environment and Sustainability is an internationally-acclaimed centre of excellence on sustainable development, and our Global Centre for Clean Air Research drives a collaborative vision of 'clean air for all.' Addressing climate change, the wastage in our consumerist society, and the problem of plastics and pollution are among the highest priorities in this area. Our Surrey researchers are accelerating ideas into practice, and making a difference.

We live in a time of dramatic and accelerating change that presents many opportunities. At Surrey, our goal is to build great and robust partnerships that have real-world impact and foster civic pride and responsibility throughout the University and beyond.

Together, we are stronger than ever in tackling the global challenges of our time.

Professor Max Lu
President and Vice-Chancellor

Finance **AND** philanthropy

In 2018-19 the University of Surrey's total income rose to £315m. Like all universities that participate in the Universities Superannuation Scheme (USS), we had to reflect in our 2018-19 accounts an exceptional change in relation to the scheme. This resulted in a headline deficit of £57m.

Our underlying operating surplus, after removing the USS charge, reorganisation costs and certain items over which we have very little control was £0.1m.

We have continued to invest heavily in our estate to improve the student experience and increase our research capacity. Our capital investment in 2018-19 totalled £70m. This included a £25m spend on new student accommodation as part of a multi-year £80m investment to provide nearly 1,200 additional rooms on our Manor Park campus.



New accommodation opens on our Manor Park campus

THE UNIVERSITY IS A NOT-FOR-PROFIT ORGANISATION WITH CHARITABLE STATUS. WE REINVEST ANY SURPLUSES BACK INTO THE UNIVERSITY TO IMPROVE OUR PHYSICAL ESTATE, DEVELOP OUR ACADEMIC ACTIVITIES AND IMPROVE OUR SERVICES

THE IMPACT OF PHILANTHROPY

Our alumni and friends are our greatest champions; their gifts and support play an invaluable role in our growth. We are very grateful for their generosity, giving both time and donations in support of our students, teaching facilities and research endeavours.

In 2018-19 the University was supported by over 1,368 individuals and 97 charitable trusts, foundations and companies, raising more than £7.5m from philanthropic donations. Over 1,217 alumni and supporters gave over 1,942 hours of their time to the University's volunteering programme.

Surrey graduate funds advanced research

The Equal Opportunities Foundation, established by Surrey graduate and philanthropist Marcus Lee, pledged £1.5 million to the University of Surrey to support pioneering research in vaccinology and renewable energy.

£7.5M

RAISED IN
PHILANTHROPIC
DONATIONS

1,942

ALUMNI
VOLUNTEERING
HOURS RECORDED

Our community

STAFF, STUDENTS AND ALUMNI

We currently employ over 3,135 people across the University, around 33 per cent of who live in Guildford with another 30 per cent living in the County of Surrey¹. The 179 companies on Surrey Research Park also employed around 4,800 highly qualified people in 2018-19.

In the 2018-19 academic year we had 15,974 students, including 660 students studying for the first stage of courses at our campus in China. Of our UK-based students, 97 per cent were studying full-time, 68 per cent of full-time students were based in Guildford² and 566 new students at the University in 2018-19 came from Surrey districts, including 142 students from Guildford³.

We are proud to be a culturally diverse University. In 2018-19, 33 per cent of students at Surrey were from outside the UK, helping to demonstrate both the diversity of our student body and the international reputation the University enjoys.

Surrey also has a global network of more than 120,000 alumni from 170 countries. 9,066 Surrey alumni live in the Guildford area⁴, and 68 per cent live in the UK. 19 per cent live in developing economies⁵.



15,974

FULL TIME
STUDENTS

566

NEW STUDENTS IN
2018-19 CAME FROM
SURREY DISTRICTS

3,144

EMPLOYEES AT THE
UNIVERSITY

12,200

STUDENTS LIVING
IN GUILDFORD

4,800

EMPLOYEES AT
COMPANIES ON SURREY
RESEARCH PARK

120,000+

UNIVERSITY OF
SURREY ALUMNI

¹ Data snapshot from 31 July 2019

² Data snapshot 1 December 2019 excluding those who were absent, taking assessments or writing up on this date. Franchised students are excluded

³ Guildford or Surrey postcode on first enrolment at Surrey in 2019

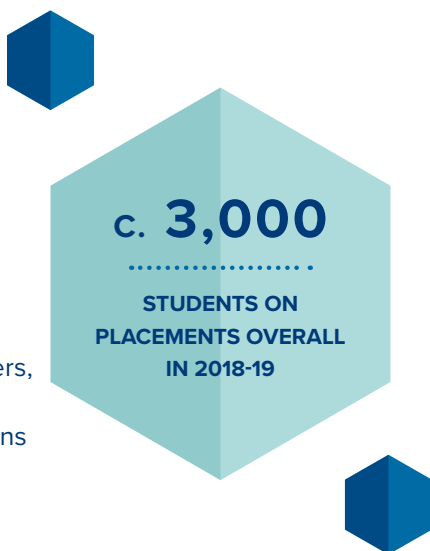
⁴ Existing alumni with a GU postcode on our records

⁵ Following economic categories in the UN World Economic Situation and Prospects Report (2019)

Powerful partnerships

Over the years we have built strong partnerships at every level to enable us to enhance our impact on industry and society.

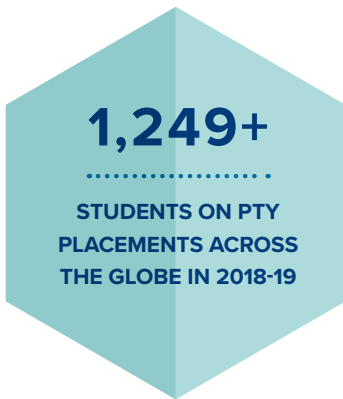
We collaborate with a range of partners across the world, from businesses to the voluntary sector, including the National Physical Laboratory, Surrey Health Partners, SETsquared (the world's top university business incubator), the University Global Partnership Network, NHS trusts, veterinary partners and many more organisations and universities.



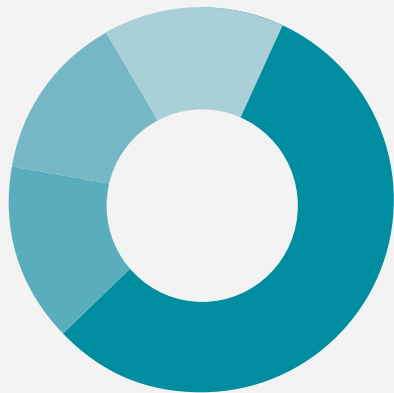
PROFESSIONAL TRAINING YEAR

The University's pioneering Professional Training placement programme continues to be a crucial part of student life at Surrey. 1,249 students were on placements in a range of sectors across the world in 2018-19.

In 2018-19, 95 per cent of students who responded to the annual PTY experience survey reported that they felt more employable as a result of their placement and 42 per cent returned with a confirmed or conditional job offer from their placement provider. 17 students from disadvantaged backgrounds received a bursary to support them in accessing the placement programme and facilitating placements abroad. 50 per cent of this was funded by generous donations from alumni and the remainder was matched by the University.

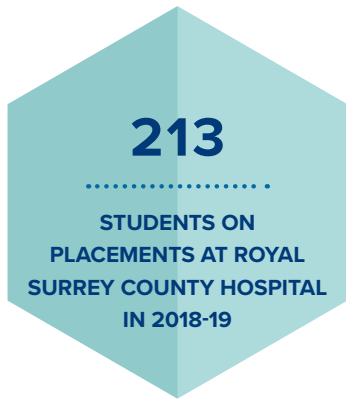
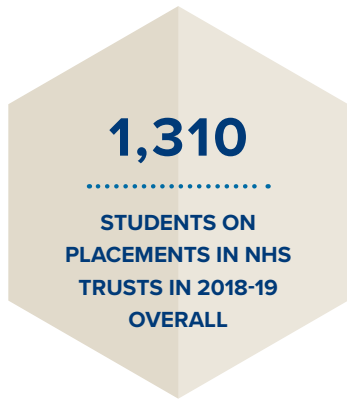


LOCATION OF PROFESSIONAL TRAINING PLACEMENTS 2018-19:



MEDICAL AND HEALTH SCIENCE PLACEMENTS

Our health sciences, midwifery and nursing students spend 50 per cent of their time in practice in a 'home' NHS trust in Surrey, Sussex, North Hampshire or East Berkshire. 1,310 students were on placements in NHS trusts in 2018-19, including 213 in the Royal Surrey County Hospital.



SURREY PLACEMENTS VOTED BEST IN THE UK

The *QS World Employability Rankings 2019* ranked the University of Surrey 1st in the UK and 7th in the world for work placements and research partnerships with employers. The rankings focus on successful collaborations with global companies to produce citable, transformative research and also focus on work placement partnerships.



PREPARING THE NEXT GENERATION OF VETS

The University of Surrey offers the UK's most integrated model of clinical veterinary education. We partner with veterinary practices, specialist referral centres, government agencies, world-leading veterinary research institutes and other universities, opening up unique learning opportunities for our students and for industry-relevant research.

489 students were on veterinary placements in 2018-19, including 184 students at our veterinary partners in the County of Surrey.



Opening access **BY** raising aspirations and attainment

The Widening Participation and Outreach Department (WP&O) at the University of Surrey is vital to the University's work in supporting the access, success and progression of students from a range of backgrounds.

In 2018-19 the University contributed £2.5m in undergraduate bursaries for students from lower income households. The number of current students who benefitted from financial support in 2018-19 was 713.

Working closely with primary and secondary schools in Guildford, Surrey and the surrounding areas, the WP&O Department designs and delivers a full programme of exciting and informative activities for Year 5 to Year 13 school pupils. These activities provide them with knowledge about higher education, introducing them to university subjects and pathways to university.

98%
OF KINGS COLLEGE,
GUILDFORD PUPILS
ENGAGED WITH AT LEAST
ONE WP&O ACTIVITY
IN 2018-19

FINDING OUR FUTURES DELIVERS FOR KINGS COLLEGE SCHOOL AND OUR LOCAL COMMUNITY

The University's partnership with Kings College, Guildford continues to go from strength to strength. Supported by a dedicated university staff member who works full-time within the school, the relationship has continued to deliver real educational and aspirational uplift for pupils. An embedded programme called 'Finding our Futures' has been developed to ensure all pupils benefit from their higher education and careers activities. As part of the programme, pupils engage in an annual bespoke aspiration curriculum designed to build their knowledge and skills from Years 7-11. In 2018-19, 98 per cent of pupils at Kings College took part in one or more WP&O activities and 81 per cent have benefitted from three or more activities.

The school serves as a national exemplar in demonstrating how school improvement can be achieved through partnership with a local university.

The University is proud of the school's achievements and of its partnership and is committed to supporting Kings College to achieve a sustainable future with an excellent standard of education for local children.



2,935

PRIMARY SCHOOL
PUPIL INTERACTIONS

14,173

SECONDARY AND
COLLEGE STUDENT
INTERACTIONS

263

PUPILS ATTENDED
RESIDENTIAL SUMMER
SCHOOL PROGRAMMES

831

PARENT/CARER
INTERACTIONS

69

MATURE LEARNER
INTERACTIONS

Engaging **WITH** our community

100+
COMMUNITY-FOCUSED
PROJECTS AND
INITIATIVES

As an integral part of the town, the University of Surrey is proud to call Guildford home.



BLOOMING MARVELLOUS FOR SURREY

The University was delighted to receive two medals in the *Guildford in Bloom* Student Showcase and Best Site for Nature Conservation categories.

Physics PhD student Daisy Shearer won 'Gold' and 'Best in Category' for her Quantum Garden, located in Guildford Park Avenue, which featured a 'path to quantum computing' with paving stones engraved with scientific breakthroughs. Our Estates team also won Silver for their fantastic campus lake, which boasts a wealth of wildlife and plant species.

In 2018-19 our staff were contributed to over 100 community-focused projects and initiatives, and over 1,300 local residents responded to our 2019 Residents' Survey helping us set the priorities for future interaction.

In one of many local research interactions, academics and students from across the University took part in the 2019 Innovate Guildford event at GLive, presenting hands-on and engaging demonstrations for several thousand visitors. Exhibitions included discovering the hidden salt in everyday foods, unearthing the science

behind nanotechnologies and exploring what artificial intelligence can do in space.

Expanding our researchers' level of engagement with local community groups and organisations continues to be a priority. We were pleased to provide community engagement opportunities in a variety of research areas including technology-based dementia care, 5G systems, cleaner environments, nutrition and healthy ageing.

We received local recognition with students entering the *Guildford in Bloom* competition, which resulted in a 'Gold' win and a 'Best in Category' award in the Student Showcase category.

Giving back

The University of Surrey is proud of its strong links with the local community. Our staff and students take part in external and University-wide volunteering and charitable campaigns throughout the year.

219

VOLUNTEER
PARTNERSHIPS
CREATED WITH OUR
STUDENTS' UNION

SURREY STUDENTS AWARDED FOR HELPING LOCAL REFUGEES



University of Surrey students were recognised for their contributions to community volunteering at the annual Student and Society Awards.

Undergraduate Nour Altounji picked up the John Hoborough Award for Volunteer of the

Year following her tireless work supporting local refugees. Meanwhile, the University's Islamic Society won Fundraiser of the Year for raising more than £19,000 for local refugees through a range of events and campaigns.

LOCAL COMMUNITY IS NUMBER ONE PRIORITY FOR UNION OFFICER

Surrey business management student Gemma Paine was elected Vice-President Community for the Students' Union in 2018-19. This role saw her bring together the student body, integrate it into the local community and provide a host of student volunteering opportunities. She is now Students' Union President and continuing her work for Surrey students and the local community.



Gemma Paine

£26,965+

RAISED FOR CHARITY BY
OUR STUDENTS' UNION
RAISING AND GIVING (RAG)
IN 2018-19

VOLUNTEERING AND FUNDRAISING WITH SURREY STUDENTS' UNION

The Students' Union Community Zone ensure that volunteering opportunities are available to all students and record volunteering activities in the community. In 2018-19, there were 2,464 active student volunteers, and USSU RAG (Raising and Giving) raised over £26,965 for local charities.

Students, staff and residents of Guildford have donated over 17,400 items the North Guildford Food Banks through our Students' Union #GetGivingFood campaign since 2015.



2,464

ACTIVE STUDENT
VOLUNTEERS

£6,330

RAISED FOR OAKLEAF
AND SHOOTING STAR
CHASE CHARITIES
THROUGH THE 5P
DISPOSABLE CUP
CHARGE

17,400+

FOOD ITEMS DONATED TO
THE SURREY
STUDENTS' UNION
#GETGIVINGFOODCAMPAIGN
SINCE 2015



Research AND impact

450+

ACTIVE INTERNATIONAL
RESEARCH PARTNERSHIPS

Pioneering research at Surrey brings direct, positive benefits to society across multiple sectors including health, communications, business and the environment.

Responding to societal challenges including crime, climate change and cancer, our research is helping those within our local region, across the UK and around the globe. Our researchers also collaborate with colleagues from around the world, and as a result over half of our research outputs feature an international author.

5G INNOVATION CENTRE TESTBED SUPPORTS ONE MILLION USERS

Surrey's 5G Innovation Centre (5GIC) testbed is the largest capacity 5G test network in the world for research, innovation and development, supporting one million users.

The testbed is open for business to companies wanting to test the readiness of their advanced applications for 5G usage. The University is also working closely with three projects from the Government's £25m 5G Testbeds and Trials Programme to cement the UK's position as a world leader in the development of 5G technology.



AI IMPROVING LIVES

New artificial intelligence developed at the University of Surrey's Centre for Vision, Speech and Signal Processing (CVSSP) could give doctors a head start in treating cancer.

Researchers have created two machine-learning models that are able to accurately predict the severity of three common symptoms faced by cancer patients – depression, anxiety and sleep disturbance. This information can then help clinicians identify high-risk patients and pre-emptively develop a plan to manage the symptoms, with a view to improving patients' quality of life.



SIGNS OF THE TIMES

The world's first machine capable of translating British Sign Language into written English is set to be built by the (CVSSP) at the University of Surrey.

The team at CVSSP are developing a new system that will recognise not only hand motion and shape, but also the facial expression and body posture of the signer and work out how they can then be translated into written and spoken language.

£78M

OVERALL RESEARCH AND
INNOVATION INCOME IN
2018-2019

Arts, culture AND events

85,130

PEOPLE ATTENDED PUBLIC
EVENTS HELD BY THE
UNIVERSITY OF SURREY
IN 2018-19

The University provides local residents with a range of educational, cultural and social activities, and there are opportunities for local, regional and international audiences to engage with our research.

30,868 people attended public events such as arts performances, lectures and demonstrations held by the University in 2018-19, including 14,073 attendees at free events. A further 54,262 people attended special events at Surrey Sports Park (SSP) in 2018-19 (excluding SSP member visits).

In 2018-19 our year-round public arts programme included 156 ticketed events and around 30 free events including musical and theatrical performances and workshops. 16,795 people attended our ticketed events in 2018-19 and over 50 per cent of attendees were members of the public. Throughout 2018-19 the University engaged with 19 external professional musicians, actors and dancers. There are also around 20 public artworks on display on our campus grounds.

168 musicians from the local area aged 11 to 71 also joined forces with staff, students and alumni from the University orchestra for two days of inspirational performances.



► SHREK HELPS LOCAL GROUP BELIEVE IN THEMSELVES



In 2019, Guildford School of Acting (GSA) hosted a *Shrek* singing workshop for more than 180 children and adults with special educational needs and disabilities. A collaborative event between GSA and Surrey Arts, the workshop saw attendees work with cast members and *Shrek* Musical Director Michael Cotton to learn various musical numbers from the show.

► A STELLAR PERFORMANCE

The University welcomed world-renowned astrophysicist Dame Jocelyn Bell Burnell DBE to present the first lectures of the 2019 Adams-Sweeting lecture series. The events offer the local community the chance to hear about the pioneering developments and innovations that are shaping our world.

► CELEBRATING INNOVATION IN THE ARTS

The University's Faculty of Arts and Social Sciences hosted their third annual Festival of Research, exploring the impact research can have on societal challenges.

More than 200 staff, students and visitors from business, public bodies and the local community attended to hear an exciting mix of discussion panels and presentations, highlighting the innovative and interdisciplinary research produced within the faculty.



► A NIGHT OF LAUGHTER AT THE BBC

Researchers from the University performed at BBC Surrey's studios as part of the July 2019 Guildford Fringe Festival. *Bright Club*, which is organised by the University, saw eight academics swap the lab for the stage, turning their research into comedy gold.



Surrey Sports Park

Surrey Sports Park continues to be a major asset to the local community as well as to the University, providing opportunities for the public both to participate in sport and to watch competitions at the highest level. The Sports Park is also home to some of the world's elite sports teams and athletes.

Surrey Sports Park held 133 public events in 2018-19, welcoming 54,262 people. This was in addition to between 0.75 and 1 million visits by members per year. They also worked with over 16,780 school children throughout 2018-19.

We're continuing to find ways to make operating the Sports Park more sustainable. During 2018-19 new LED lights were installed to replace inefficient external lighting and 13 per cent of the Sports Park's energy was generated through a biomass boiler using locally-sourced wood chips.

54,262

ATTENDEES AT
SURREY SPORTS
PARK EVENTS IN
2018-19



16,780

SCHOOL CHILDREN
ENGAGED IN EVENTS AND
ACTIVITIES IN 2018-19

SURREY LAUNCHES FOOTBALL 'SATELLITE CLUB'

Surrey Sports Park has launched a new football 'Satellite Club' as part of its ongoing commitment to provide students with a platform to get involved in the community. The weekly recreational session for 14 to 19-year-olds is led by Guildford Saints football coaches and supported by student coaches from the University.

HOOP FOR THE FUTURE

Surrey Sports Park's professional basketball team Surrey Scorchers took part in a nationwide community programme for young people from schools in deprived areas, called 'Hoops 4 Health'. Topics including internet safety, healthy eating and the importance of exercising were all covered in the programme to address specific areas of concern in local Guildford state schools.



LOCAL KIDS BOUNCE INTO THE WEEKEND

The Forever Surrey Fund has bought a high-spec trampoline to help support local clubs at Surrey Sports Park. Every year, thousands of alumni and friends of the University donate to the Forever Surrey Fund that amongst other things supports student clubs and societies to deliver activity for community benefit.

The international-standard trampoline will be used by the Surrey Trampolining Club whose student members help run the Saturday Sports Club, providing sessions for local children with special educational needs and their families.



1,013

STAFF ENGAGED
WITH SURREYMOVES
2018-19

6,667

STAFF AND STUDENT
USERS OF
SURREYMOVES



2,149,613

MILES TRAVELLED BY
SURREYMOVES USERS
IN 2018-19

Living **together**

As residents of Guildford, our student population brings numerous benefits to the community and many of our alumni continue to live and work in the local area after they graduate.

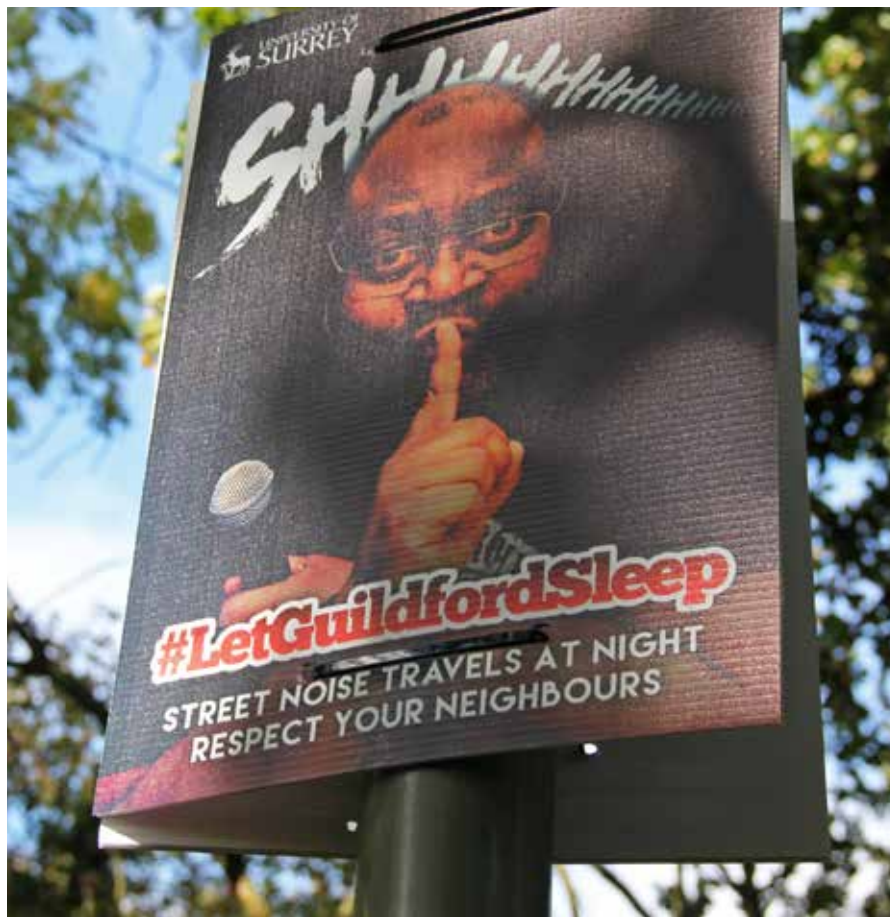
We estimate that in 2018-19 there were 12,200 full-time Surrey students studying on campus who may have required accommodation in Guildford⁶. Around 6,489 students lived in University owned and/or managed accommodation⁷. 480 new student rooms were delivered in 2018-19 and a further 670 rooms were in construction with a delivery date of September 2019. The investment in new student accommodation over the three years up until September 2019 has been £80m, during which a total of 1,153 units will have been delivered.

We continue to work with neighbours close to campus through our residents' liaison groups and with local landlords through University of Surrey Lettings (USL) to help students find safe and suitable accommodation.

Our accommodation security teams, USL, the Students' Union and Public Engagement team work together with local Guildford residents on complaint and investigation procedures. We also hold quarterly residents' stakeholder meetings for hotspot areas. As a result of these discussions Street Marshals, jointly funded by the University and the Students' Union, were introduced in 2017-18 to help reduce noise and anti-social behaviour and improve student safety in Walnut Tree Close, a road adjacent to Stag Hill campus.

The Students' Union *Living Off Campus Guide* is emailed to all students annually and covers issues such as managing noise and rubbish.

► NEIGHBOURHOOD CONCERNS: SURREY STEPS UP



The University have organised a variety of projects to tackle issues affecting neighbourhoods near campus. These range from a thought-provoking University campaign to tackle antisocial street noise in residential roads near the campus with the message '#LetGuildfordSleep', to helping local students living in Guildford manage their refuse.

⁶This is likely to be a maximum number as it does not allow for groups such as students living in their parents' or their own homes in Guildford, or students living outside Guildford and commuting in. This number excludes nursing and veterinary medicine students on placement who may living outside Guildford.

⁷ This includes 5,966 living in University owned accommodation and 523 in accommodation managed by University of Surrey Lettings.

6,489

STUDENTS LIVING IN
UNIVERSITY OWNED
AND MANAGED
ACCOMMODATION

How **WE** travel

We monitor the way our staff and students travel to and from the University. Through University-wide campaigns, partnerships and improving infrastructure we seek to increase the number of people walking, cycling and using public transport on campus. The University is replacing its operational fleet with new electric vehicles. During 2018-19, the introduction of five new electric vehicles saved 3,500 litres of fuel and 8 tonnes of carbon in total and reduced local air pollution.

► LET'S GET BUS-Y

The University has increased the number of buses operating between Stoughton and Guildford town centre through its campuses. The enhanced service is being operated in partnership with Stagecoach and will hopefully encourage more bus travel by local residents, University staff and students.

► SUPPORT FOR SUSTAINABLE TRAVEL

The University is supporting Guildford Borough Council and Surrey County Council's new and improved Sustainable Movement Corridor (SMC). The SMC aims to encourage people to walk, cycle or take the bus by providing a safe and attractive route across Guildford.

Surrey researchers and students have been providing advice on pollution mitigation measures and sustainable ways to improve the pedestrian and cycle path routes between the town centre and western neighbourhoods of Guildford.

60

NEXTBIKES ON CAMPUS

9

NEXTBIKE DOCKING
STATION AREAS



2,500

REGISTERED USERS OF
NEXTBIKES

16%

INCREASE IN BUS
PASSENGER NUMBERS
BETWEEN OUR SITES
USING THE UNIVERSITY
BUS SERVICE

11,000

NEXTBIKE TRIPS IN 2018-19
THAT HAD REDUCED
IMPACT ON
LOCAL ROADS

Environment AND sustainability

At Surrey, we are working towards creating a more environmentally-friendly future. We are embedding improved sustainability across our day-to-day operations, teaching and research on campus, as well as helping to drive change in the local community.

ENERGY, WATER AND CARBON

In 2018-19 we announced our new energy policy, committing the University to reducing its energy use, promoting energy-efficient behaviours with students, staff and visitors and strengthening links to research.

Our carbon emissions fell by 6 per cent compared to 2017-18, despite an increase in student numbers and growth of our campus footprint. We also reduced our electricity and gas demand by 2 per cent and 7 per cent, respectively, by introducing energy-efficient technologies and optimising existing systems.

In June 2019, we established our new water policy, committing us to a 15 per cent reduction in absolute water use by the end of 2020-21. The introduction of infra-red sensors in bathrooms alone has seen water use fall by 12m litres in this reporting period.



Both the University's new energy and water policies link to the UN Sustainable Development Goals, providing a global context to our efforts. We were ranked 100th globally in recognition of our sustainability progress in the *Times Higher Education University Impact Rankings 2019*, the only global performance league table that assesses universities against the United Nations' Sustainable Development Goals agenda.



REDUCING SINGLE-USE COFFEE CUPS

In 2018-19, 45 per cent of all hot drinks sold in catering outlets across the University were sold in reusable cups, an increase from 5 per cent in 2017-18.

The introduction of a University-wide 5p cup levy has diverted over 87,000 cups from waste, and all proceeds from the cup charge in 2018-19 were donated to local charities Shooting Star Chase and Oakleaf.

In 2018-19, our Centre for Environment and Sustainability presented the Roland Clift lectures championing critical thinking in sustainable development and practice. Guest speakers were Dr Steve Waygood from Aviva Investors and Joanna Yarrow, IKEA's Head of Sustainable and Healthy Living, who shared their insights into the future of green business models.

INFRA RED SENSORS IN
BATHROOMS REDUCED
WATER USE ON CAMPUS
BY 12M LITRES

A GREENER GUILDFORD

In partnership with Surrey Wildlife Trust and Guildford Borough Council's Project Aspire, North West Guildford 2030 (NWG2030) project's ambition is to help support the residents of north-west Guildford in establishing a greener future for the area.

A series of workshops were held with the local community to understand how investing in the world's natural assets and green spaces can lead to sustainable enhancements to quality of life.



MORE PEDAL POWER

Following the University's successful launch of a 60-strong bike-share scheme in Guildford last year, Surrey has secured further funding to expand, improve and safeguard the project. So far, more than 2,500 University staff, students and Research Park tenants have registered to use the scheme, with approximately 600 cycle journeys made each week across the network.



SEEING GREEN

The University's Global Centre for Clean Air Research ran interactive community workshops with local residents. The sessions allowed participants to identify problem areas near schools, playgrounds, hospitals and near busy roads, where the use of green infrastructure such as hedges could improve the air quality.

SUSTAINABLE PRINTING

This year we decided to produce our undergraduate prospectus in a smaller format that, compared to last year's undergraduate prospectus, has saved 42 tonnes of paper. It was also printed on Carbon Balanced Paper, which enables the World Land Trust to protect critically threatened tropical forests.

Logos to be added

Innovation

AND THE economy

The University of Surrey supports growth and economic activity in the region through its innovation ecosystem. We measure our economic contribution through Gross Value Added (GVA) assessments carried out every two years by independent consultants BiGGAR Economics. Their reports provide an important tool for understanding the contribution of the University to the local and national economy.

Our economic contribution has grown by 25 per cent since our first economic impact report for 2012-13. In 2016-17 the University and its Research Park generated almost £1.75bn GVA for the UK and supported 17,800 jobs, including 13,900 in the County of Surrey and 11,200 in the Borough of Guildford.

INCUBATION AND INNOVATION

The University's technology transfer and translation activities that have gone on to become active companies on the Surrey Research Park generate jobs and economic growth at scale.

In 2018-19, 17 spin-out companies active at that time employed over 450 people (this was based on 350 staff at Surrey Satellite Technology Limited, 36 in the SETsquared companies and 64 in spin-outs across the Park). The total turnover for all of these companies together in 2018-19 was over £90m.

By the end of 2019 and as a founding partner of SETsquared, the University was supporting some 79 companies, not only from our Research Park but the wider business community as well. It was also responsible for encouraging and supporting student enterprise and helping researchers make their work commercially viable.

With the combination of companies in SETsquared, those growing in the Surrey Technology Centre (STC), and those in the Rocketdesk games co-working space that is partially sponsored by the Research Park, the University now hosts over 175

businesses that are in varying stages of commercial science, engineering and technology work.

In 2018-19, these companies employed around 700 well-qualified (on average four per company) people that are estimated to turnover in excess of £40m.

The Surrey 100 Club is the University's managed angel investment network run from the STC. A strong relationship with the University and the SETsquared partnership allows the Club unrivalled access to innovative companies and provides the foundation with venture creation, enabling its members to take an active role in tomorrow's success stories. In 2018-19, 23 companies pitched at five events from which the Club leveraged over £2.6m of funding.

175

COMPANIES SUPPORTED
BY SURREY INCUBATION

£2.6M+

LEVERAGED BY THE
SURREY 100 CLUB IN
2018-19

13,900

JOBS SUPPORTED BY THE
UNIVERSITY IN THE
COUNTY OF SURREY

£90M

TOTAL TURNOVER OF
INCUBATOR COMPANIES

€5M TO BOOST BUSINESSES

Awarded €5 million of funding by the European Union, the University instigated a significant new collaborative project that will use blockchain technologies to support start-ups and small-to-medium-sized enterprises. This project will help ensure that the work of small businesses remains secure and efficient – from protecting their data to tracking and invoicing goods.



Credit: Getty Images

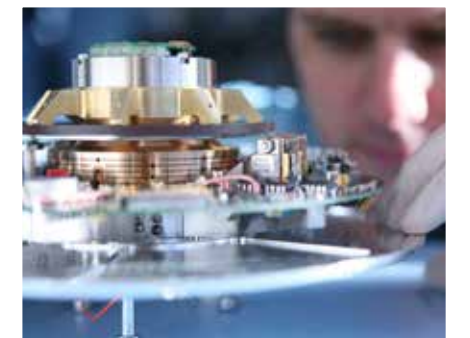
A DIGITAL BOOST FOR THE LOCAL ECONOMY

In a bid to boost the local economy, a new partnership between the University, Visit Surrey and Surrey Chambers of Commerce will introduce a series of events aimed at helping local businesses enhance their profitability through digital collaboration.



LAUNCHING SURREY BUSINESSES INTO SPACE

In 2019 Surrey Space Centre hosted a networking event to help propel more small businesses into the sector, thanks to the new Space Research and Innovation Network for Technology (SPRINT) scheme. SPRINT aims to encourage UK-based space and space-related enterprises to collaborate on funded projects with one or more of the scheme's five university partners – Surrey, Leicester, Southampton, Edinburgh and the Open University.



SURREY RESEARCH PARK

Established in 1983, Surrey Research Park builds strong links between tenants, Surrey academics and the business community. In 2018-19 the Park was home to over 179 companies that employed around 4,800 well qualified staff, a significant proportion of whom held in highly technical jobs.

36

YEARS OF EXPERTISE
IN TECHNOLOGY
ENTREPRENEURSHIP

4,800

EMPLOYEES AT SURREY
RESEARCH PARK

We need YOU!



Reflections

The University has always been a pioneer since its founding in 1966 and before that as Battersea Polytechnic Institute in 1891. Over the years we're proud to have formed close partnerships with other establishments and organisations, to support the local and wider community and continue our ongoing responsibility as an anchor institution in Guildford.

We are committed to monitoring and addressing our social, economic and environmental impact and supporting our local community. By understanding our impact, we can strive to extend it where it is positive and seek to modify it where it is negative.

Measuring Up 2018-19 has highlighted the significant impact we have as a University on a local, national and global scale and presented key updates from the academic year. Some highlights include: reducing our carbon emissions by 6 per cent while continuing to grow as an organisation, Surrey Sports Park hosting 133 public events including community youth programmes, working with 14,173 secondary school and college students through widening participation and outreach activities, and providing 2,464 active Surrey student volunteers who raised over £26,965 for local charities.

This report has also presented updates on our staff, student and alumni community, including how they travel and live as residents in Guildford, and how the University is working with the local community to manage this social and environmental impact.

Above all, our strength is in our people. Our local and global partnerships, alongside the support of our alumni and friends, enable us to change students' lives, support development in the local and wider economy, and research innovative solutions to pressing issues faced by our society today.

The impact of the University of Surrey will continue to be observed and evaluated annually in order to understand how we are driving change and advancing our future contribution to society in a socially conscious manner.





8676-1119

External Engagement
University of Surrey
Guildford, Surrey, GU27XH, UK
T: 0800 980 3200/ +44(0)1483 300800

E: enquiries@surrey.ac.uk
Twitter.com/uniofsurrey
Facebook.com/universityofsurrey
Youtube.com/universityofsurrey



Disclaimer

We've made all reasonable efforts to ensure that the information in this publication was correct at the time of going to print in March 2020, but we can't accept any liability for any inaccuracies in the information published, and the information might change from time to time without notice.

For the latest and most up-to-date information, please visit our website at: surrey.ac.uk

