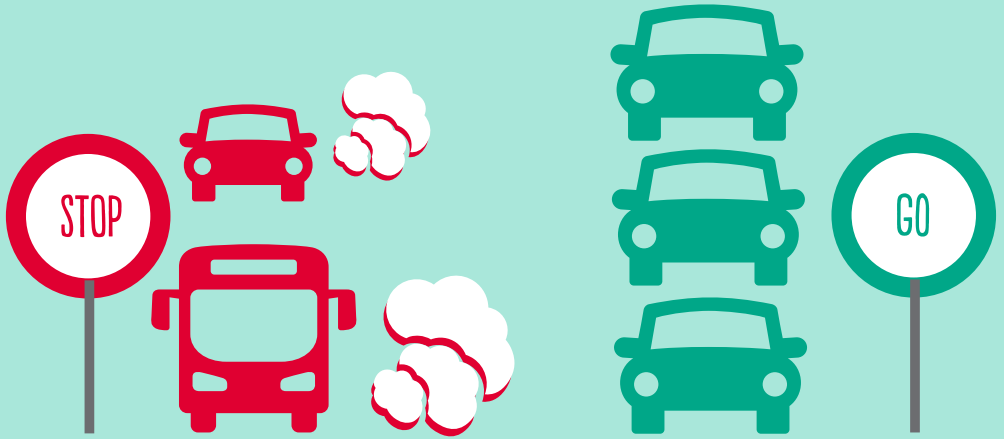


FACT #6

PARTICLE NUMBER CONCENTRATIONS AT POLLUTION HOTSPOTS, SUCH AS TRAFFIC INTERSECTIONS AND BUS STOPS, CAN BE NEARLY TWO-THIRDS HIGHER THAN AT SECTIONS OF THE ROUTE WITH FREE-FLOW TRAFFIC.



Stop-start and acceleration-deceleration conditions usually lead to elevated pollutant concentrations at places such as traffic intersections and bus stops, and minimising time spent at them will reduce your exposure to pollution.

CHILDREN

- Try to stand away from the curb, traffic intersections and bus stops to reduce your exposure to harmful vehicular pollutants.

SCHOOL

- Schools should notify parents/carers that commuting to/from school via main roads presents a risk of high exposure to vehicular emissions.
- Alternative routes with no/less traffic should be suggested.

COMMUNITY

- With support from schools, communities should encourage local authorities to move traffic intersections and bus stops away from school premises where feasible.



GLOBAL CENTRE FOR
CLEAN AIR RESEARCH

UNIVERSITY OF SURREY