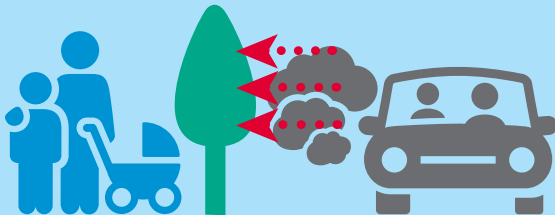




2. CREATE A CLEAN AIR ZONE AROUND SCHOOLS

Creating a clean air zone around schools by implementing 'active' solutions (anti-idling approaches to control vehicle emissions, relocating drop-off/pick-up points away from school entrances, etc) can minimise pollution levels in and around school premises.



GLOBAL CENTRE FOR
CLEAN AIR RESEARCH

UNIVERSITY OF SURREY