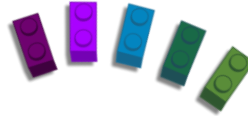


BLOCS (Block Construction Skills for Mathematics) Research Summary

Is LEGO® construction ability related to spatial skills and mathematics?

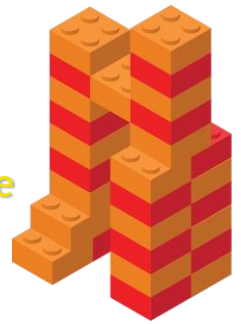


If it is, then children might be able to practice Lego building to improve their spatial skills and maths performance.




In our study, 358 children completed tasks measuring their spatial and maths skills.



They also completed a Lego construction task where they had to copy Lego models either using physical Lego bricks or in a digital platform.



When we analysed the data, we found that:

-  Children who built Lego models more accurately also achieved higher mathematics scores
-  Spatial skills explained part of the reason why their Lego construction ability and maths were related
-  This was true for both physical and digital Lego building, although different types of spatial skills were relevant for each task

These findings are important because it means that we might be able to design Lego building training, with a goal of improving children's spatial skills and mathematics ability.