



Thinking outside the box...

Dr Louise Bramley

Assistant Director of Nursing

Research Innovation and Transformation

Nottingham University Hospitals NHS Trust



Research
Leadership



Research
Delivery

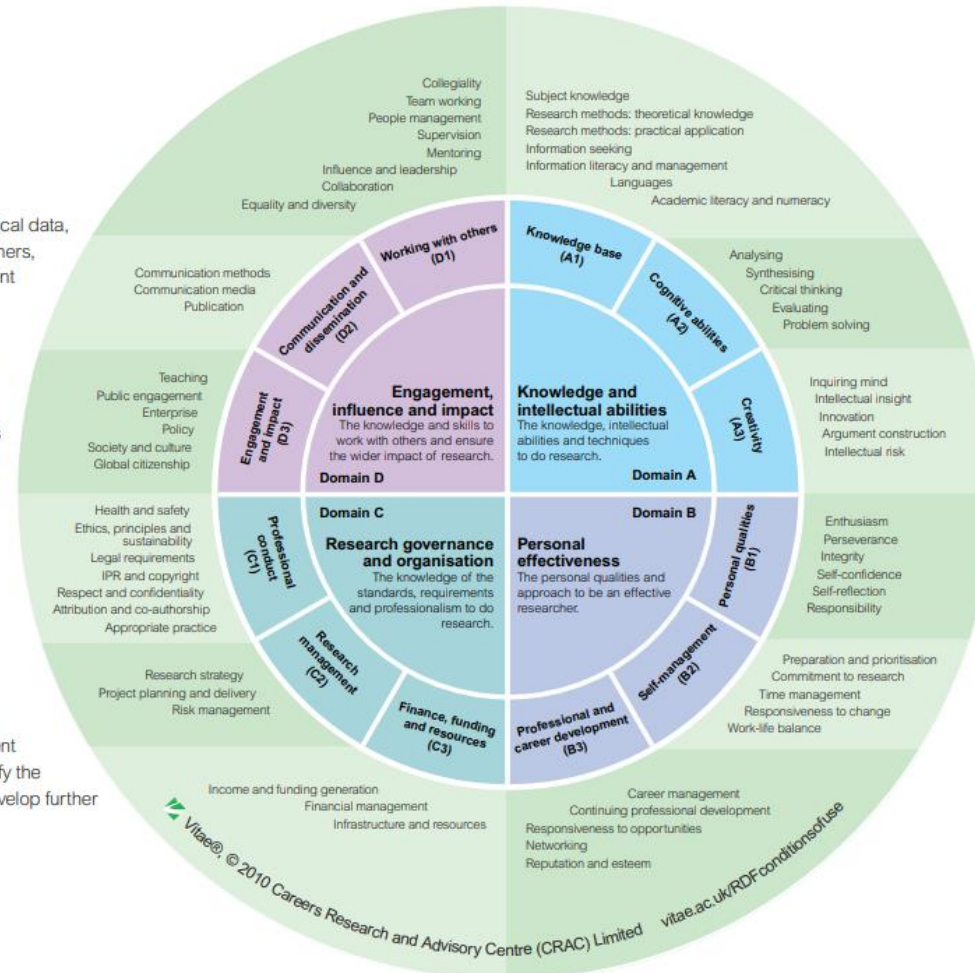


Researcher professional development (vitae.ac.uk)

Structure

The RDF has been created from empirical data, collected through interviewing researchers, to identify the characteristics of excellent researchers expressed in the RDF as 'descriptors'. The descriptors are structured in four domains and twelve sub-domains, encompassing the knowledge, intellectual abilities, techniques and professional standards to do research, as well as the personal qualities, knowledge and skills to work with others and ensure the wider impact of research. Each of the sixty-three descriptors contains between three to five phases, representing distinct stages of development or levels of performance within that descriptor.

The RDF has been incorporated into a downloadable Professional Development Planner to enable researchers to identify the areas in the framework they want to develop further and to create an action plan.



Which level is for you?

Internship

- New to research
- Gain experience
- Informal
- 'Taster'

Pre-doctoral

- Interest in research
- Some formal training
- Not yet ready to apply for PhD
- Future PhD applicant

Pre-Doctoral Bridging

- Require no further formal academic/ clinical academic training
- PCAF would create unnecessary delay before doctoral submission
- Time to develop a doctoral fellowship application
- Future PhD applicant



Doctoral Map

- Future academic/ clinical academic
- Ready to undertake PhD/PhD in progress
- Rise in Professional Doctorate
- Previous research experience and training
- Post Doctoral (*Bridging and Beyond*)

Local...

- Colleagues
- Networks
- R&I
- Types of research



Research & Innovation

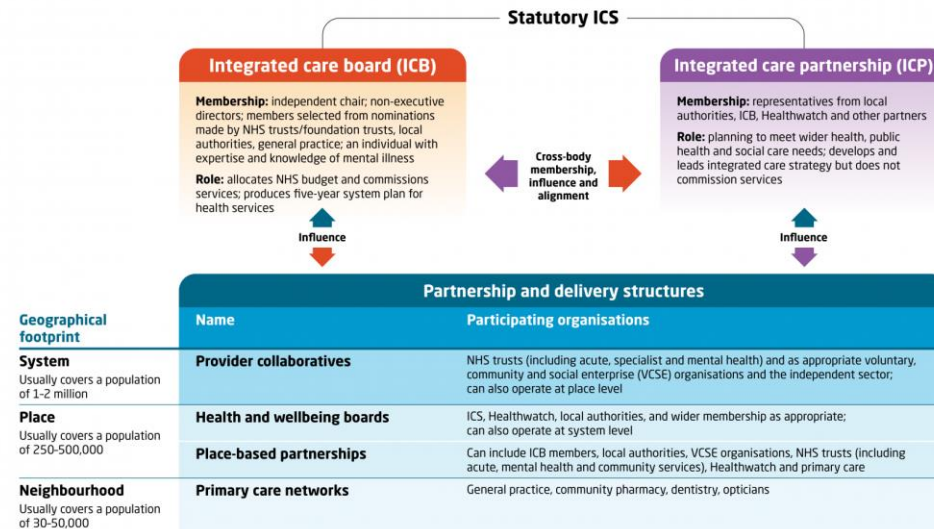


Integrated care systems (ICSs)

Key planning and partnership bodies from July 2022

NHS England
Performance manages and supports the NHS bodies working with and through the ICS

Care Quality Commission
Independently reviews and rates the ICS



Regional...

Collaborations



Clinical Academic
Practitioners
Network East



East Midlands
Clinical-Academic
Practitioner Network



Excel



The University of
Nottingham



Council of
Deans of Health

Clinical Academic Roles
Implementation Network CARIN



Royal College
of Nursing

2020 | International Year
of the Nurse and Midwife

NOTTINGHAM
TRENT UNIVERSITY



MIDLANDS
HEALTH
ALLIANCE

Research &
Innovation



NIHR | Nottingham Biomedical
Research Centre

Trailblazer
Group

TeamCNO



Value



Develop



Excel

National...



National Institute for
Health Research

NIHR RESEARCH CAREER PATHWAYS

PRE-DOCTORAL

DOCTORAL

POST-DOCTORAL
(EARLY)

POST-DOCTORAL
(SENIOR)

CHAIR

FELLOWSHIPS FOR ALL

NIHR Fellowships, NIHR Research
Professorships and other awards

Pre-Doctoral
Fellowship

Doctoral
Fellowship

Advanced Fellowship

Development & Skills
Enhancement Award

Research
Professorship

HEALTHCARE PROFESSIONALS

(NON-DOCTORS/DENTISTS)

HEE/NIHR Integrated Clinical
Academic Programme

HEE/NIHR
Pre-doctoral
Clinical Academic
Fellowship

HEE/NIHR Clinical
Doctoral Research
Fellowship

HEE/NIHR Clinical
Lectureship

HEE/NIHR
Senior Clinical
Lectureship

DOCTORS AND DENTISTS

NIHR Integrated Academic
Training Programme

In-Practice
Fellowship

Academic Clinical
Fellowship

Clinical
Lectureship

RESEARCH TRAINING FOR ALL

Through NIHR Infrastructure & Schools

Biomedical Research Centres • Collaborations for Leadership in Applied Health Research and Care
• Patient Safety Translational Research Centres • NIHR Schools

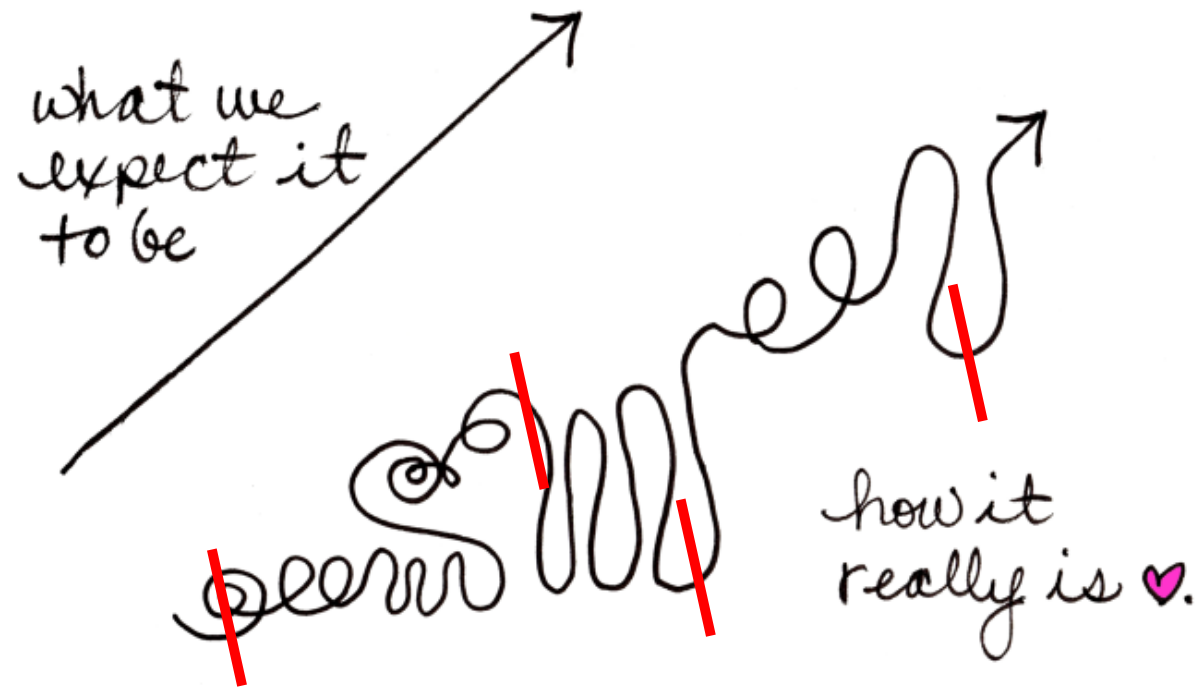
The Journey

what we
expect it
to be



♥ Robin@robinhallett.com

The Journey



♡ Robin@robinhallett.com

Leadership Framework

Leading Self

- Compassionate to self and others
- Resilient achiever
- Demonstrates a clear vision



Nurture

- Develops others
- Empowers others
- Values inclusion

Collaborate

- Builds rapport
- Maintains relationships
- Leverages expertise

Influence

- Influences with impact
- Inspires others
- Listens intently
- Demonstrates courage

Leading Beyond Authority

- Strategically aware
- Seizes opportunities
- Responds with agility
- Navigates political landscapes

louise.bramley@nuh.nhs.uk

 [@loubramley](https://twitter.com/loubramley)

