

Expect **MORE**

SCHOOL OF HEALTH SCIENCES



**OPEN DAY GUIDE
AND CAMPUS MAP**

SATURDAY 7 OCTOBER
SATURDAY 14 OCTOBER



UNIVERSITY OF
SURREY

YOUR OPEN DAY

An open day is your opportunity to discover everything you need to know before making one of the biggest decisions of your life.

From that first step onto campus until you head home, our open day is bursting with activities and experiences. We encourage you to make the most of your time with us, by exploring everything from teaching and accommodation through to societies and sports.



Instagram
@uniofsurrey



Twitter
@uniofsurrey



Facebook
/universityofsurrey

GETTING AROUND

Parking is available at our Kate Granger Building on our Manor Park campus, but we recommend travelling by public transport where possible.

When you arrive, follow signs to check-in at the Kate Granger Building, where we will scan your pre-booked ticket.

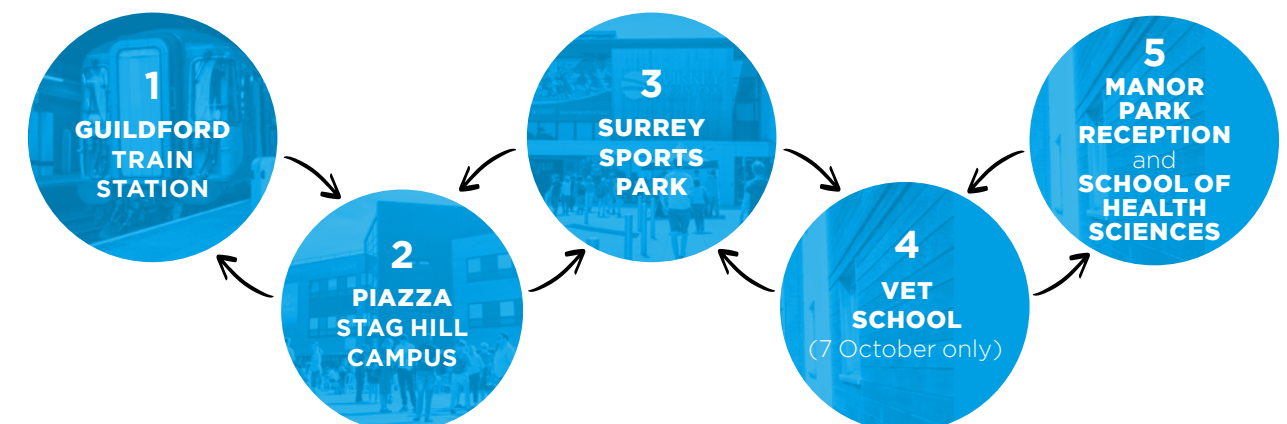
Our Stag Hill campus is quite large and includes some steep inclines. If you visit this campus, staff at the information point in Austin Pearce Building will be able to provide more information on the most accessible routes around this campus. We can also provide wheelchairs on request. Use the AccessAble app, which provides detailed accessibility information on the University's campuses, buildings and facilities.

For more information and to download the app, visit:
[accessible.co.uk/organisations/
university-of-surrey](https://accessible.co.uk/organisations/university-of-surrey)

Please let us know in advance if you have any accessibility requirements so we can make sure you get the most out of your open day.
Contact: opendays@surrey.ac.uk

If you have any queries on the day, please visit the check-in desk in Kate Granger reception.

From 8am to 4:30pm, our free open day shuttle buses run between Guildford train station, Stag Hill campus and Manor Park campus approximately every **15 minutes**.





OUR TALKS AND TOURS



NURSING, MIDWIFERY AND PARAMEDIC SCIENCE TALKS

(Ticket Required) Kate Granger Building, Manor Park campus.

TALK	START TIMES	LOCATION
Midwifery	11am – 12 noon 2pm – 3pm	Kate Granger Building, Room 22HSM00
Nursing	9:30am – 10:30am 12:30pm – 1:30pm	Kate Granger Building, Room 22HSM00
Paramedic Science	10am – 11am 1pm – 2pm	Kate Granger Building, Room 18A&BHSM00

Talks will provide an introduction to Surrey, the campuses and life here in Guildford, followed by more information about studying nursing, midwifery or paramedic science at Surrey.

You will have selected the time of your subject talk when you booked your open day place. Your open day ticket (sent via email) states your talk time, so please make sure you bring this with you and attend the correct talk.

Open day staff will be there to help and check your ticket when you arrive.



SIMULATION CENTRE TICKETED TOURS

Our open day includes a tour of our facilities. When you arrive at check-in please visit our tour desk to collect a ticket in advance of the tour. Tickets will be allocated on a first come first served basis. At busy times, tours may be limited to prospective students only. Tours will last approximately 45 minutes and will run at the following times: 9am, 9:30am, 10am, 10:30am, 11am, 11:30am, 12 noon, 1pm, 1:30pm and 2pm.

We will also be running a drop-in between 2:30-4pm where you can explore at your own pace.

INFORMATION STANDS

We will have a number of information stands available in the Kate Granger Atrium, including staff from our Admissions and Placement teams.

YOU CAN ALSO VISIT OUR STAG HILL CAMPUS...

Your ticket also entitles you to access the activity taking place on Stag Hill campus, including general talks, campus tours and Information Fair. You can hop-on a free shuttle bus, running regularly from Manor Park Reception to Stag Hill Piazza between 8am and 4pm.

OTHER TALKS

Make the most of every moment of your open day and attend our open day talks where you can learn more about student life at Surrey.

These talks take place throughout the day on our Stag Hill campus and Manor Park campus and you don't need to book a place in advance. Room locations are marked on the open day campus map.

TALK	START TIMES	DURATION	LOCATION
Welcome to Surrey	9am, 9:50am, 11:45am, 12:35pm	30 minutes	Stag Hill campus, Austin Pearce Building, AP3&4
Applying to Surrey and Student Finance	10:40am, 1:25pm	45 minutes	Stag Hill campus, Austin Pearce Building, AP3&4
Careers Services and the Professional Training Year	11:10am, 2pm	30 minutes	Stag Hill campus, Rik Medlik Building, Room 32MS03
Accommodation at Surrey	10:15am, 12:15pm	30 minutes	Manor Park campus, Kate Granger Building, Room 23HSM00

As well as the Information Stands in Kate Granger Atrium, an Information Fair will also be available in MySurrey Hive, Stag Hill campus. Drop in anytime between 9am and 4pm to chat with our student service teams for more information on accommodation, applying to Surrey, student wellbeing and welfare and discover more about student life at Surrey.



JOIN A TOUR

Explore our beautiful green campus during your open day to get a feel for what it could be like to live and study here.

STAG HILL CAMPUS TOURS

Student ambassadors will lead you around the grounds and facilities on our Stag Hill campus.

To join a tour, go to the campus tour meeting point in Austin Pearce Building. Booking is not required.

Tours run every 15 minutes from 9am and last approximately 50 minutes. The last tour leaves at 3pm.

SURREY SPORTS PARK

Explore our amazing sports facilities at Surrey Sports Park and hear our students' experiences. **Tours leave Surrey Sports Park Reception every half hour between 10am and 3pm.**

Also come along to our Varsity Suite at Surrey Sports Park to learn more about our world-class Performance Sport programme. **Talks take place at 11:30 and 1pm.**



A HOME AWAY FROM HOME

STUDENT ACCOMMODATION

If you choose to live at university, we have more than 6,000 rooms to suit all budgets. Rooms are banded A to F according to price and amenities.

The popularity of the University means that all our student accommodation is occupied. Because of this, we are unable to offer tours inside our student accommodation during this open day.

For more information about our accommodation:

Our Living at Surrey brochure will be available at the check-in point. This brochure provides detailed information and floor plans of all our accommodation.

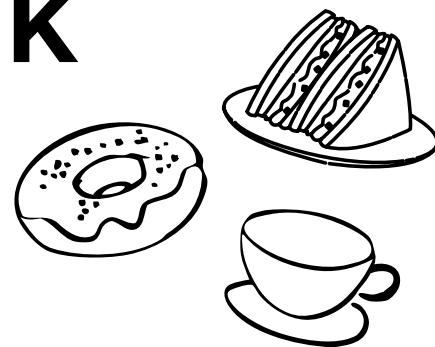
Please attend one of our 30-minute accommodation talks, which take place at 10:15am and 12:15pm in Kate Granger Building.

STUDENT LIFE AT SURREY

Please visit PATS marquee on Stag Hill campus between 9am and 4pm to learn more about student life at Surrey, including examples of our student clubs and societies, live music and refreshments.



WHERE TO EAT AND DRINK ON THE DAY



LOOKING FOR MORE CHOICE?

Whether you're after a sit-down meal or a snack on-the-go, there are lots of places to eat and drink on campus.



MANOR PARK CAMPUS

HEALTH SCIENCES CAFE

Kate Granger building (School of Health Sciences)

{ 8am to 4pm }

MANOR PARK SOCIAL

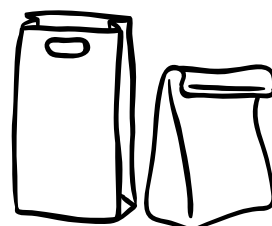
Manor Park Reception

{ 10am to 11pm }

PITCHSIDE COFFEE SHOP

Surrey Sports Park

{ 8am to 6pm }



STAG HILL CAMPUS

LAKESIDE COFFEE SHOP

Rik Medlik Building

{ 8am to 4pm }

WATES BROTHERS BAR

Wates House

{ 11am to 4pm }

Visit Wates Brothers Bar to enjoy a wide variety of hot food and cold drinks.

SIMPLYFRESH

Library and Learning Centre

{ 8am to 8pm }

SimplyFresh is a small food hall that sells a range of snacks and lunches to go.

HEAD INTO GUILDFORD AFTER YOUR OPEN DAY

The town centre's 100-plus cafés, restaurants and pubs are only a 15-minute walk or a shuttle bus ride from our Stag Hill campus.

SURREY SPORTS PARK



Team Surrey's Performance Sport Programme is designed to maximise the potential of both individual and team performance of our talented and hard-working student athletes.

There are a number of resources and programmes available to high-performance athletes and teams based at the University of Surrey. From our Dual Career Programme, to our Scholarships, all members of Team Surrey's Performance Support Programme are supported by a team of dedicated strength and conditioning coaches, physiotherapists, sports nutritionists, sport psychologists and performance lifestyle advisors.

Come along to the Varsity Suite through Pitchside at the Surrey Sports Park to learn more about our world class Performance Sport Programme.

Talks take place at 11:30am and 1pm.



DID YOU ENJOY OUR OPEN DAY?

Please take a few minutes to complete our questionnaire to help us improve our future open days.
surrey.ac.uk/opendaysurvey2023

WHAT'S NEXT?



The end of open day is just the start of a new and exciting chapter in your life. As you continue to explore your options you'll get a better idea of which university is the right choice for you.

SO YOU'VE EXPLORED EVERYTHING THAT SURREY HAS TO OFFER. WHAT'S NEXT?



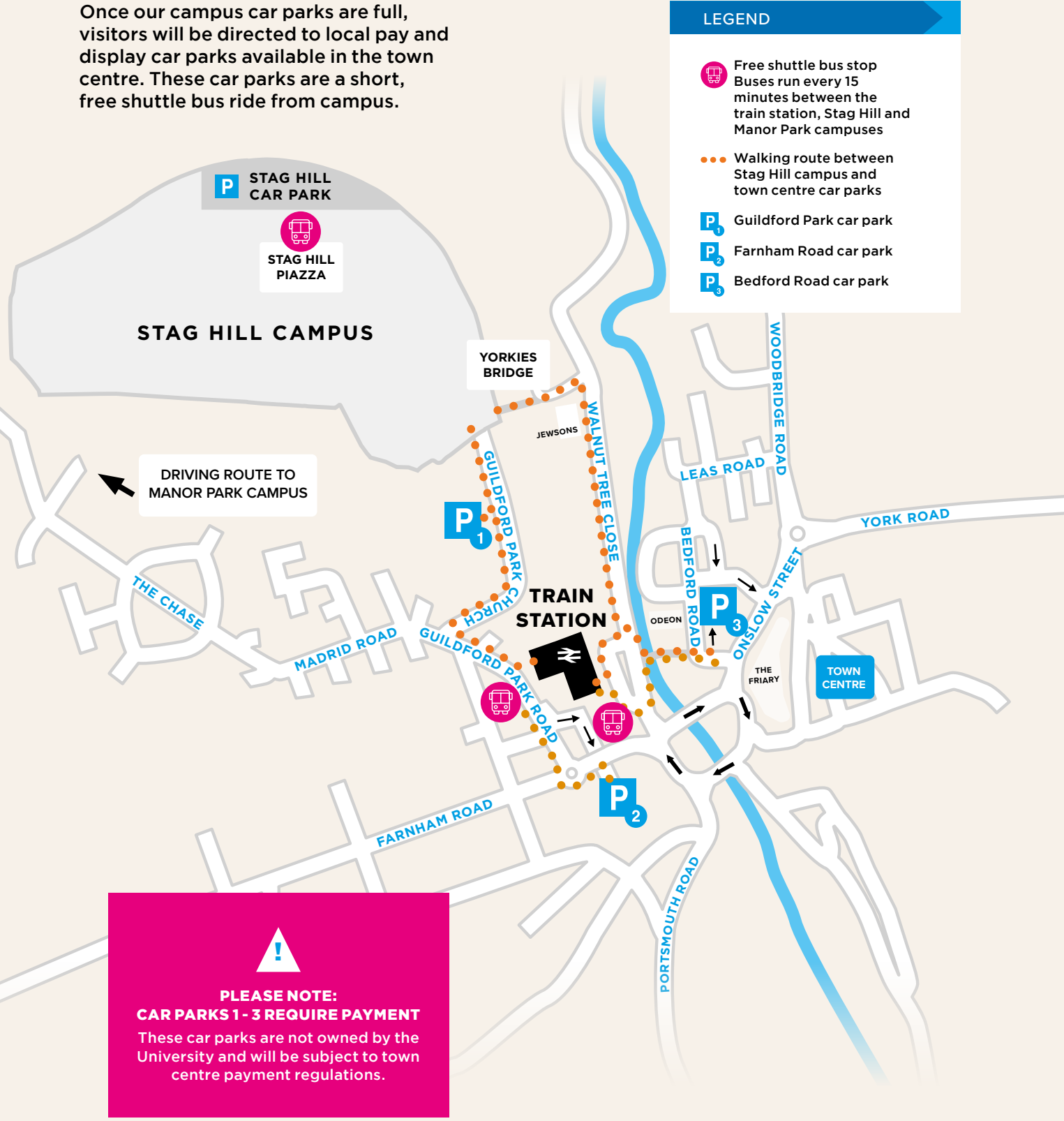
If you do not receive what you expect, not to worry, contact us and look at courses via clearing

OPEN DAY MAPS

GUILDFORD TOWN CENTRE

FINDING YOUR WAY AROUND

Once our campus car parks are full, visitors will be directed to local pay and display car parks available in the town centre. These car parks are a short, free shuttle bus ride from campus.



LEGEND

Free shuttle bus stop
Buses run every 15 minutes between the train station, Stag Hill and Manor Park campuses

Walking route between Stag Hill campus and town centre car parks

Guildford Park car park

Farnham Road car park

Bedford Road car park

PLEASE NOTE:
CAR PARKS 1 - 3 REQUIRE PAYMENT
These car parks are not owned by the University and will be subject to town centre payment regulations.



CAFÉ/RESTAURANT Manor Park campus

Bench Bar [E2]

Pitchside Coffee Shop [E2]

Vet School Café [F3]
Vet School main building
(Saturday 7 October only)

Health Sciences Café [H4]
School of Health Sciences building

Manor Park Social [F4]
Manor Park Reception

KEY BUILDINGS / AREAS

Surrey Sports Park [E2]Vet School main building [F3]Manor Park Reception [G4]Veterinary Pathology Centre [G2]Veterinary Clinical Skills Centre [H2]School of Health Sciences (Kate Granger Building) [H4]

KEY

Vet School open day [F3]
Vet School main building
Please check-in on arrival.
(Saturday 7 October only)

School of Health Sciences open day [H4]
Kate Granger Building

Bus stop for Surrey Sports Park [E2]
to/from Guildford train station, Stag Hill campus, Surrey Sports Park and Manor Park campus and Manor Park Reception

Bus stop for Vet School [G3]
to/from Guildford train station, Stag Hill campus, Surrey Sports Park and Manor Park Reception. (Saturday 7 October only)

Bus stop for Manor Park Reception and School of Health Sciences open day [G4]
to/from Guildford train station, via Surrey Sports Park, Vet School and Stag Hill campus

Walking route
from Manor Farm car park to Vet School and Manor Park reception

Walking route
from Manor Park Reception to School of Health Sciences and Medicine open day

Toilet

Information point

Complimentary tea and coffee point

Water refill station

STAG HILL

CAMPUS

GETTING AROUND STAG HILL CAMPUS

All important buildings are either located on the piazza or one of three walking routes - blue ●●●, green ●●● and pink ●●● - which are marked by coloured flags.



P Guildford Park

Guilford Railway Station

Campus entrance

Yorkies Bridge

Town centre via Walnut Tree Close

KEY

Check-in [D5]
Please check-in here first

Information Fair [D3]
Information on accommodation and student support

Student Life at Surrey [F4]
Information on student clubs and societies, live music and complimentary refreshments

Campus tour meeting point [D5]
Tours start every 15 minutes from Austin Pearce building from 9am-3pm.

Prayer room [D4]

Bus stop [E5]
Buses running to Guildford train station and Manor Park campus, Surrey Sports Park, Vet School and School of Health Sciences open days

Toilet

Information and Accessibility Point [D5]

Complimentary tea and coffee [F4]

Water bottle refill stations [D5], [G3], [G2], [E3]

FOOD AND DRINK Stag Hill campus

University Food Festival [E4] - green route ●●●

Hillside Coffee Shop [C3] - blue route ●●●

Wates House [D3] - pink route ●●●

Lakeside Coffee Shop [D5] - on the Piazza

SimplyFresh [D3] - pink route ●●●

Stageside Coffee Shop [G3] - green route ●●●

The Hideout [F3] - green route ●●●

ACCESSABLE APP

Use the AccessAble app which provides detailed accessibility information about all of the University's campuses, buildings and facilities.

For more information and to download the app visit: accessible.co.uk/organisations/university-of-surrey

BUILDINGS AND AREAS

- 5G/6G Innovation Centre [F3] - green route ●●●**
- Alan Turing Building (BB building) [D4] - blue route ●●●**
- Archives & Special Collections [E3] - pink route ●●●**
- Austin Pearce Building (AP building) [D5] - on the Piazza**
- Centre for Wellbeing [B4] - blue route ●●●**
- Duke of Kent Building [B4] - blue route ●●●**
- Elizabeth Fry Building (AD building) [E4] - pink route ●●●**
- Frank Whittle Building (AB building) [D4] - pink route ●●●**
- Guildford School of Acting (GSA) [G2] - green route ●●●**
- Innovation for Health Learning Laboratory [F3] - green route ●●●**
- Ivy Arts Centre [G3] - green route ●●●**
- James Joule Building (BC building) [E4] - green route ●●●**
- Lecture Theatre Block [D3] - pink route ●●●**
- Lewis Carroll Building (AC building) [D4] - green route ●●●**
- Library & Learning Centre [D3] - pink route ●●●**
- MySurrey Hive [D4] - pink route ●●●**
- Oak House (Hillside Coffee Shop) [C3] - blue route ●●●**
- PATS Building [E3] - green route ●●●**
- PATS Marquee [F4] - green route ●●●**
- Piazza [D5]**
- Rik Medlik Building [D5] - on the Piazza**
- Robert Boyle Building (AZ building) [C4] - blue route ●●●**
- Senate House [C4] - blue route ●●●**
- Students Union [B3] - blue route ●●●**
- Teaching Block [E3] - pink route ●●●**
- Thomas Telford Building (AA building) [D4] - blue route ●●●**



#SurreyOpenDay

CONNECT WITH US

 /universityofsurrey

 @uniofsurrey

 @uniofsurrey

 /universityofsurrey

Safety Information

If the fire alarm sounds continuously, please leave the building by the nearest exit.

In the event of an emergency, please contact our Security team: 01483 683333.

Smoking in University buildings is not permitted.

Disclaimer

We've made all reasonable efforts to ensure that the information in this publication was correct at the time of going to print in September 2023, but we can't accept any liability for any inaccuracies in the information published, and the information might change from time to time without notice.

For the latest and most up-to-date information, please visit our website:

surrey.ac.uk

