

# Expect **MORE**

**OPEN DAY GUIDE  
AND CAMPUS MAP**

---

SATURDAY 6 SEPTEMBER



UNIVERSITY OF  
**SURREY**



# OVERVIEW

ACTIVITY	LOCATION AND TIMES	MORE INFORMATION
Subject Information	Various	Pages 11-19
General Information Talks	Various	Page 10
Self-guided Accommodation Tours	Various locations. Open 9am-5pm	Page 7
Student Services Information Fair	MySurrey Hive. Open 9am-5pm	Page 8
Guided Campus Tours	Austin Pearce Foyer. Start 9am. Last tour departs at 4pm.	Page 6
Student Clubs and Societies	PATS Marquee. Open 9am-5pm	Page 9
Library and Learning Centre	Open 9am-5pm	Page 6
Archives and Special Collections	Library and Learning Centre. Open 10am-12:15pm and 12:35pm-3:30pm.	Page 6
Surrey Sports Park Tours	Surrey Sports Park. Start 10am. Last tour departs at 4pm.	Pages 6 and 22
Food and Drink	Various	Page 20

# YOUR OPEN DAY

An open day is your opportunity to discover everything you need to know before making one of the biggest decisions of your life.

From that first step onto campus until you head home, our open day is bursting with activities and experiences. We encourage you to make the most of your time with us, by exploring everything from teaching and accommodation through to societies and sports.



Instagram  
@uniofsurrey



TikTok  
@uni.surrey



# GETTING AROUND

If you are driving, parking on campus is limited. Once our car parks are full, you will be directed off campus to pay and display car parks. These car parks are either a short walk to campus or to Guildford train station, where you can take the free shuttle bus.

Please let us know in advance if you have any accessibility requirements so we can make sure you get the most out of your open day.

Contact: [opendays@surrey.ac.uk](mailto:opendays@surrey.ac.uk)

If you have any queries on the day, please visit the Accessibility Point in Austin Pearce Foyer.

When you arrive, follow signs to the check-in point in Austin Pearce Building on Stag Hill campus, where we will scan your e-ticket.

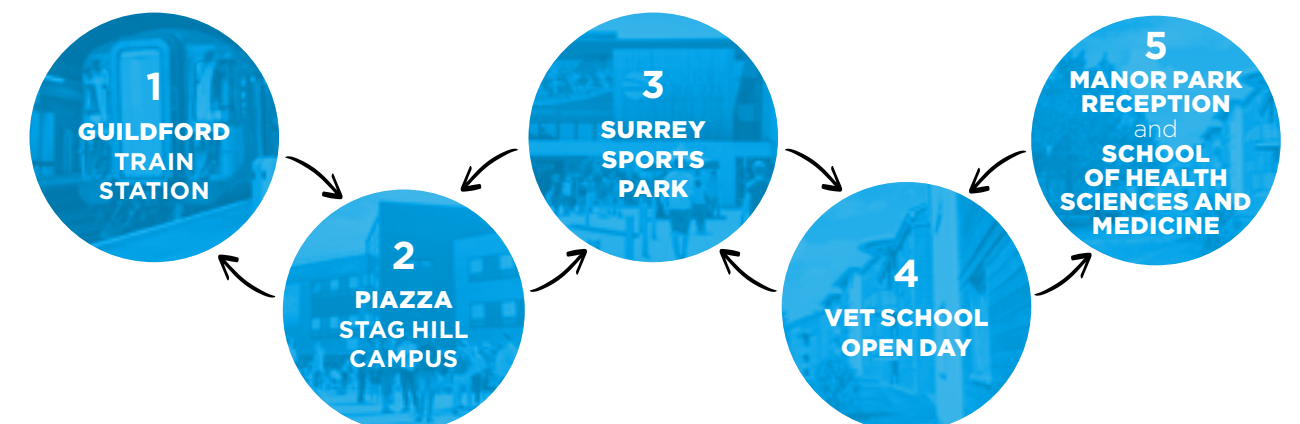
If you are visiting Guildford School of Acting, you can also check-in at the Ivy Arts Centre.

Campus maps are included at the back of this guide. On Stag Hill campus, all activity can be found by following one of the three coloured walking routes, marked by coloured flags and additional yellow signs. Staff and student helpers at our information points will also be happy to help if you have any queries.

Our Stag Hill campus is quite large and includes some steep inclines, but staff at the Accessibility Point in Austin Pearce Building will be able to provide more information on the most accessible routes around this campus. Use the AccessAble app, which provides detailed accessibility information on the University's campuses, buildings and facilities.

For more information and to download the app, visit: [accessable.co.uk/organisations/university-of-surrey](https://accessable.co.uk/organisations/university-of-surrey)

From 8am to 5:20pm, our free open day shuttle buses run between Guildford train station, Stag Hill campus and Manor Park campus approximately every **15 minutes**.



# JOIN A TOUR

Explore our beautiful green campus during your open day to get a feel for what it could be like to live and study here.

## STAG HILL CAMPUS TOURS

Student ambassadors will lead you around the grounds and facilities on our Stag Hill campus.

To join a tour, go to the meeting point in Austin Pearce Building

**Tours run every 15 minutes from 9am and last approximately 50 minutes. The last tour leaves at 4pm.**

Campus tours do not include student accommodation. Examples of our Standard En-suite, Budget and Shared rooms are open for you to drop in and explore anytime from 9am-5pm. Please refer to the campus maps at the back of this guide for open accommodation locations.

## SURREY SPORTS PARK TOURS

Explore our amazing sports facilities at Surrey Sports Park, on Manor Park campus, and hear our students' sport experiences.

**Tours last 30 minutes, and leave every half hour between 10am and 4pm.**

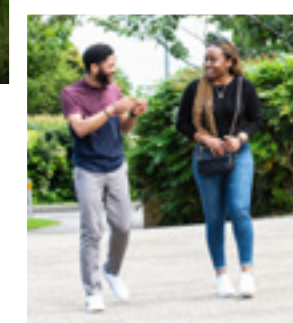
Also, come along to the World Cup Suite at Surrey Sports Park to learn more about our world-class Performance Sport programme.

**Talks take place at 11:30am, 1pm and 2:30pm.**

This programme is designed to maximise the potential of both individual and team performance of our talented and hard working student athletes.

## LIBRARY AND LEARNING CENTRE

Our Library and Learning Centre on Stag Hill campus will be open on **Level 1 between 9am and 5pm**. Our Archives and Special Collections will also be open **between 10am-12:15pm and 12:35pm-3:30pm**, with a display from our varied collections and members of the team available to chat to.



# YOUR HOME AWAY FROM HOME

## VIEW ACCOMMODATION

If you choose to live at university, we have more than 5,700 rooms to suit all budgets.

You can view accommodation on Stag Hill campus, as well as our Manor Park campus.

Stag Hill campus has examples of Shared Bedrooms, Budget and Standard En-suite rooms, while Manor Park campus has examples of Standard En-suite rooms, Premium En-suite rooms and Studio Flats. All rooms are **open from 9am-5pm**, for you to drop in and explore at your own pace.

Please refer to the campus maps at the back of this guide for open accommodation locations.

If you would like to view accommodation on Manor Park campus, please take the free shuttle bus from Stag Hill Piazza to Manor Park Reception.

## ACCOMMODATION INFORMATION

To provide more information about living at Surrey, we will also be offering 30 minute **talks** throughout the open day (see page 10 for talk times and locations).

Visit the Student Services **Information Fair** in MySurrey Hive, where our Accommodation team will be on hand to answer any questions you may have.



See page 10 for talk times and locations



# STUDENT SERVICES INFORMATION FAIR

Visit our Information Fair located in **MySurrey Hive** on Stag Hill campus. Drop in anytime between **9am and 5pm** to chat with our student services, including **accommodation, admissions, careers and placements, disability and neuroinclusion, and student wellbeing and welfare.**

**OPEN  
9AM-5PM**

**MySurrey  
hive**



MySurrey Hive is a space for students to study, socialise and access support on anything from academic help to wellbeing and student life. Located centrally on Stag Hill campus, the Hive is open 365 days a year.

## LOOKING FOR SUBJECT INFORMATION?

If you have a question about one of our courses or would like to chat to academic staff and current students, visit our subject drop-ins. Locations and opening times for these areas can be found on pages 11-19.



# STUDENT CLUBS AND SOCIETIES

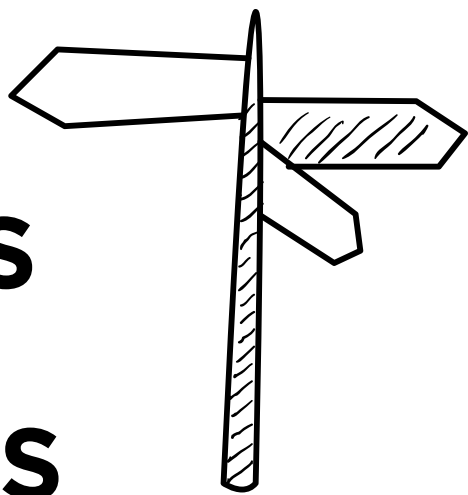
**Please visit PATS Marquee on Stag Hill campus between 9am and 5pm**

to meet a selection of student clubs and societies, as well as Team Surrey and the Students' Union.





# TALKS AND TOURS



These talks take place throughout the day on our Stag Hill campus. Room locations are marked on the open day campus map found at the back of this guide.

## GENERAL TALKS

TALK	START TIMES	DURATION	LOCATION
Welcome to Surrey	8:35am, 9:25am, 11am, 11:50am, 1:20pm, 3pm	30 minutes	Austin Pearce Building, AP3
Applying to Surrey and Student Finance	10:10am, 12:35pm, 2:10pm, 3:50pm	30 minutes	Austin Pearce Building, AP3
Disability and Neuroinclusion	11am, 12:30pm, 3:20pm	20 minutes	11am, 3:20pm - Rik Medlik Building, Room 32MS01 12:30pm - Lecture Theatre Block, Lecture Theatre L
Accommodation at Surrey	10:20am, 12:30pm, 1:30pm, 3:30pm	30 minutes	Rik Medlik Building, Room 03MS01
Study or work abroad	9:30am, 12:20pm, 1:45pm	20 minutes	Rik Medlik Building, Room 32MS01
Foundation Year	10:30am, 2:35pm	20 minutes	Lecture Theatre Block, Lecture Theatre L

Seats at our General Talks will be allocated on a first come, first served basis.

“ Our subject drop-ins are a great place to meet and chat with staff and current students. ”

## SUBJECT TALKS, TOURS AND DROP-INS

SUBJECT AREA	TYPE	START TIMES	DURATION	LOCATION OR START POINT
Accounting and Finance	Talk*	9:15am, 11:15am, 1:30pm	30 minutes	Lewis Carroll (AC) Building, Room 02AC01
	Tour	9:45am, 10:15am, 10:45am, 11:20am, 11:50am, 12:20pm, 1:20pm, 1:50pm, 2:20pm, 2:50pm, 3:20pm	25 minutes	Rik Medlik Building, Foyer <i>Please collect tickets in advance from Rik Medlik Building foyer. Tickets are allocated on a first come, first served basis.</i>
	Drop-in	9am-4pm	Drop-in	Rik Medlik Building, Foyer
Acting BA (Hons)	Talk & Tour*	10:35am, 1:15pm	Talk 50 minutes Tour 45 minutes	Ivy Arts Centre, Bellairs Theatre <i>A 45 minute tour will follow immediately after the subject talk.</i>
	Drop-in	9am-4pm	Drop-in	Guildford School of Acting
Actor Musician BA (Hons)	Talk & Tour*	11:20am, 1:50pm	Talk 50 minutes Tour 45 minutes	Ivy Arts Centre, Roberts Studio <i>A 45 minute tour will follow immediately after the subject talk.</i>
	Drop-in	9am-4pm	Drop-in	Guildford School of Acting

\*You booked your subject session(s) when you registered to attend the open day. Your e-ticket shows your booked session(s) and entitles you and one guest to attend.

SUBJECT TALKS, TOURS AND DROP-INS

SUBJECT AREA	TYPE	START TIMES	DURATION	LOCATION OR START POINT
Aerospace Engineering	Talk*	9:30am, 11:20am, 2:20pm	30 minutes	5G/6G Innovation Centre, Rooms 01CIILG and 02CIILG
	Tour	9:30am, 10:20am, 11:15am, 12:10pm, 1:25pm, 2:20pm, 3:20pm	45 minutes approx.	Alan Turing (BB) Building, Engineering Design Centre <i>Please collect tickets in advance from Engineering Design Centre. Tickets are allocated on a first come, first served basis.</i>
	Drop-in	9am-4pm	Drop-in	Alan Turing (BB) Building, Engineering Design Centre
Applied and Contemporary Theatre BA (Hons)	Talk & Tour*	10am, 12:30pm	Talk 50 minutes Tour 45 minutes	Ivy Arts Centre, Roberts Studio <i>A 45 minute tour will follow immediately after the subject talk.</i>
	Drop-in	9am-4pm	Drop-in	Guildford School of Acting
Biological Sciences, Biochemistry, Biomedical Science, Microbiology and Veterinary Biosciences	Talk*	9:15am, 11:15am, 1:30pm, 3:15pm	45 minutes	Lecture Theatre Block, Lecture Theatre L
	Lab visit	10:30am, 11:05am, 11:40am, 12:15pm, 12:50pm, 2pm, 2:35pm, 3:15pm, 4:15pm	30 minutes	Innovation for Health Learning Laboratory <i>Please collect tickets in advance from Innovation for Health Learning Laboratory. Tickets are allocated on a first come, first served basis.</i>
	Drop-in	9am-4pm	Drop-in	Innovation for Health Learning Laboratory

SUBJECT TALKS, TOURS AND DROP-INS

SUBJECT AREA	TYPE	START TIMES	DURATION	LOCATION OR START POINT
Biomedical Engineering	Talk & Tour*	10:35am, 12:25pm, 3:10pm	Talk 30 minutes Tour 45 minutes	Lecture Theatre Block, Lecture Theatre B <i>A 45 minute tour will follow immediately after the subject talk.</i>
	Drop-in	9am-4pm	Drop-in	Alan Turing (BB) Building, Engineering Design Centre
Business Management Business Management International Business Management Business Management with Business Analytics Business Management with Marketing Business Management with Human Resource Management Business Management with Entrepreneurship and Innovation	Talk*	11:10am, 2:20pm	55 minutes	Rik Medlik Building, Room 03MS01
	Tour	9:45am, 10:15am, 10:45am, 11:20am, 11:50am, 12:20pm, 1:20pm, 1:50pm, 2:20pm, 2:50pm, 3:20pm	25 minutes	Rik Medlik Building, Foyer <i>Please collect tickets in advance from Rik Medlik Building foyer. Tickets are allocated on a first come, first served basis.</i>
	Drop-in	9am-4pm	Drop-in	Rik Medlik Building, Foyer
Chemical Process Engineering	Talk & Tour*	11:10am, 1:30pm	Talk 30 minutes Tour 45 minutes	James Joule (BC) Building, Level 2, Room 43BC02 <i>A 45 minute tour will follow immediately after the subject talk.</i>
	Drop-in	9am-4pm	Drop-in	Alan Turing (BB) Building, Engineering Design Centre

\*You booked your subject session(s) when you registered to attend the open day. Your e-ticket shows your booked session(s) and entitles you and one guest to attend.

SUBJECT TALKS, TOURS AND DROP-INS

SUBJECT AREA	TYPE	START TIMES	DURATION	LOCATION OR START POINT
Chemistry	Talk & Tour*	10am, 3pm	Talk 30 minutes Tour 30 minutes	Robert Boyle (AZ) Building, Room 04AZ01 <i>A 30 minute tour will follow immediately after the subject talk.</i>
	Drop-in	9am-4pm	Drop-in	Robert Boyle (AZ) Building, Room 07AZ01
Civil Engineering	Talk & Tour*	10:20am, 12noon, 1:30pm	Talk 30 minutes Tour 45 minutes	Lecture Theatre Block, Lecture Theatre J <i>A 45 minute tour will follow immediately after the subject talk.</i>
	Drop-in	9am-4pm	Drop-in	Alan Turing (BB) Building, Engineering Design Centre
Computer Science	Talk*	10:15am, 12:15pm, 2:30pm, 3:30pm	30 minutes	Lewis Carroll (AC) Building, Room 02AC01
	Tour	9:25am, 10:25am, 11:20am, 12:15pm, 1:30pm, 2:25pm, 3:20pm	45 minutes	Alan Turing (BB) Building, Level 4, Room 01BB04 Otter Lab <i>Please collect tickets in advance from Alan Turing (BB) Building, Room 01BB04. Tickets are allocated on a first come, first served basis.</i>
	Drop-in	9am-4pm	Drop-in	Alan Turing (BB) Building, Level 4, Room 01BB04 Otter Lab
Creative Music Technology	Talk & Tour*	12noon, 2:30pm	Talk 30 minutes Tour 45 minutes	Teaching Block, Room 06TB00 <i>A 45 minute tour will follow immediately after the subject talk.</i>
	Drop-in	9am-4pm	Drop-in	PATS Building, PATS Lower Foyer

\*You booked your subject session(s) when you registered to attend the open day.  
Your e-ticket shows your booked session(s) and entitles you and one guest to attend.

SUBJECT TALKS, TOURS AND DROP-INS

SUBJECT AREA	TYPE	START TIMES	DURATION	LOCATION OR START POINT
Criminology: Criminology with Forensic Investigation: Criminology and Psychology	Talk*	9:15am, 11:15am, 1:30pm, 3:30pm	30 minutes	Lecture Theatre Block, Lecture Theatre G
	Drop-in	9am-4pm	Drop-in	Elizabeth Fry (AD) Building, Level 3
Economics	Talk*	10:15am, 12:15pm, 2:30pm, 3:30pm	30 minutes	10:15am, 12:15pm, 2:30pm - Lecture Theatre Block, Lecture Theatre G 3:30pm - Lecture Theatre Block, Lecture Theatre F
	Drop-in	9am-4pm	Drop-in	Rik Medlik Building, Foyer
Electrical and Electronic Engineering (Including Computer and Internet Engineering and Astronautic and Space Engineering)	Talk & Tour*	10:20am, 12:10pm, 3:10pm	Talk 30 minutes Tour 60 minutes	5G/6G Innovation Centre, Room 01CIILG and 02CIILG <i>A 60 minute tour will follow immediately after the subject talk.</i>
	Drop-in	9am-4pm	Drop-in	Alan Turing (BB) Building, Engineering Design Centre
English Literature and Creative Writing	Talk*	10:15am, 2:30pm	30 minutes	Lecture Theatre Block, Lecture Theatre F
	Student Q&A Panel	10:55am, 3:10pm	20 minutes	Elizabeth Fry (AD) Building, Level 4, Room 35AC04 <i>Seats are allocated on a first come, first served basis.</i>
	Tour	Visit Archives and Special Collections. Open between 10am-12:15pm and 12:35pm-3:30pm on the Ground Level corner of the Library. A selection of material will be on display and staff available to provide more information on how the Archive is used in our teaching sessions.		
Environment and Sustainability	Drop-in	9am-4pm	Drop-in	Elizabeth Fry (AD) Building, Level 2, Room 61AD02
	Talk*	10:10am, 11:35am, 2:30pm	30 minutes	Rik Medlik Building, Room 32MS01
	Drop-in	9am-4pm	Drop-in	Thomas Telford (AA) Building, Level 2



SUBJECT TALKS, TOURS AND DROP-INS

SUBJECT AREA	TYPE	START TIMES	DURATION	LOCATION OR START POINT
Film Production and Broadcast Engineering BEng (Hons)	Talk & Tour*	10:45am, 1:30pm	Talk 30 minutes Tour 60 minutes	Teaching Block, Room 18TB01 <i>A 60 minute tour will follow immediately after the subject talk.</i>
	Drop-in	9am-4pm	Drop-in	PATS Building, PATS Lower Foyer
Food Science, Nutrition and Dietetics	Talk & Tour*	9:30am, 11:30am, 1:30pm	Talk 30 minutes Tour 45 minutes	Lecture Theatre Block, Lecture Theatre B <i>A 45 minute tour will follow immediately after the subject talk.</i>
	We also encourage you to attend a biosciences lab visit which last 30 minutes and take place regularly between 10:30am and 4:15pm. Please visit the Innovation for Health Learning Laboratory for more information and to collect tickets in advance.			
	Drop-in	9am-4pm	Drop-in	Innovation for Health Learning Laboratory
Foundation Musical Theatre (CertHE) and Foundation Acting (CertHE)	Talk & Tour*	11:30am, 1:50pm	Talk 30 minutes Tour 45 minutes	Ivy Arts Centre, Rex Doyle Studio <i>A 45 minute tour will follow immediately after the subject talk.</i>
	Drop-in	9am-4pm	Drop-in	Guildford School of Acting
Games Design	Talk & Tour*	9:45am, 3:10pm	Talk 30 minutes Tour 45 minutes	Teaching Block, Room 18TB01 <i>A 45 minute tour will follow immediately after the subject talk.</i>
	Drop-in	9am-4pm	Drop-in	PATS Building, PATS Lower Foyer
International Hospitality, Event, Tourism and Transport Management (including International Airline and Airport Management)	Talk*	10:10am, 1:30pm	45 minutes	Rik Medlik Building, Room 39MS02
	Drop-in	9am-4pm	Drop-in	Rik Medlik Building, Lakeside Restaurant

\*You booked your subject session(s) when you registered to attend the open day.  
Your e-ticket shows your booked session(s) and entitles you and one guest to attend.

SUBJECT TALKS, TOURS AND DROP-INS

SUBJECT AREA	TYPE	START TIMES	DURATION	LOCATION OR START POINT
Languages <i>this is also relevant for Business students studying Business with a language</i>	Talk, Tour and Networking	11:10am, 3:20pm	Talk 30 minutes Tour & Networking 45 minutes	Lecture Theatre Block, Lecture Theatre J <i>A 45 minute tour and networking session will follow immediately after the subject talk.</i>
	Drop-in	9am-4pm	Drop-in	Elizabeth Fry (AD) Building, Level 2, Room 61AD02
Law	Talk*	10:15am, 12:15pm, 3:30pm	30 minutes	Lecture Theatre Block, Lecture Theatre D
	Drop-in	9am-4pm	Drop-in	Frank Whittle (AB) Building, Level 5, Court of the Future and Law Library
Mathematics	Talk*	9:30am, 11am, 1:30pm, 3:10pm	30 minutes	Thomas Telford (AA) Building, Level 4, Room 24AA04
	Taster session	10:15am, 11:45am, 2:15pm	30 minutes	Thomas Telford (AA) Building, Level 4, Room 22AA04 <i>Seats are allocated on a first come, first served basis.</i>
	Drop-in	9am-4pm	Drop-in	Thomas Telford (AA) Building, Level 4, Room 40AA04
Mechanical Engineering	Talk*	10:30am, 12:30pm, 1:30pm	30 minutes	Lecture Theatre Block, Lecture Theatre M
	Tour	9:30am, 10:20am, 11:15am, 12:10pm, 1:25pm, 2:20pm, 3:20pm	45 minutes approx.	Alan Turing (BB) Building, Engineering Design Centre <i>Please collect tickets in advance from Engineering Design Centre. Tickets are allocated on a first come, first served basis.</i>
	Drop-in	9am-4pm	Drop-in	Alan Turing (BB) Building, Engineering Design Centre



SUBJECT TALKS, TOURS AND DROP-INS

SUBJECT AREA	TYPE	START TIMES	DURATION	LOCATION OR START POINT
Media and Communication	Talk*	9:25am, 11:10am, 3:20pm	30 minutes	Rik Medlik Building, Room 39MS02
	Drop-in	9am-4pm	Drop-in	Elizabeth Fry (AD) Building, Level 3
Music	Talk & Tour*	10:40am, 1:15pm	Talk 30 minutes Tour 45 minutes	Teaching Block, Room 06TB00 <i>A 45 minute tour will follow immediately after the subject talk.</i>
	Drop-in	9am-4pm	Drop-in	PATS Building, PATS Lower Foyer
Musical Theatre BA (Hons)	Talk & Tour*	9:20am, 12noon, 2:30pm	Talk 50 minutes Tour 45 minutes	Ivy Arts Centre, Bellairs Theatre <i>A 45 minute tour will follow immediately after the subject talk.</i>
	Drop-in	9am-4pm	Drop-in	Guildford School of Acting
Music and Sound Recording (Tonmeister®)	Talk & Tour*	9:15am, 3:45pm	Talk 30 minutes Tour 45 minutes	Teaching Block, Room 06TB00 <i>A 45 minute tour will follow immediately after the subject talk.</i>
	Drop-in	9am-4pm	Drop-in	PATS Building, PATS Lower Foyer
Nursing, Midwifery, Paramedic Science, Medicine		A separate, pre-booked programme of open day activities for prospective nursing, midwifery, paramedic science and medicine students takes place on our Manor Park campus.		
Physics	Talk & Tour*	9:15am, 11:15am, 1:30pm	Talk 30 minutes Tour 60 minutes	Lecture Theatre Block, Lecture Theatre F <i>A 60 minute tour will follow immediately after the subject talk.</i>
	Drop-in	9am-4pm	Drop-in	Alan Turing (BB) Building, Level 3, Room 31BB03

\*You booked your subject session(s) when you registered to attend the open day.  
Your e-ticket shows your booked session(s) and entitles you and one guest to attend.

SUBJECT TALKS, TOURS AND DROP-INS

SUBJECT AREA	TYPE	START TIMES	DURATION	LOCATION OR START POINT
Politics and International Relations	Talk*	9:20am, 11:20am, 1:30pm, 3:30pm	30 minutes	Lecture Theatre Block, Lecture Theatre E
	Drop-in	9am-4pm	Drop-in	Austin Pearce Building, Room 18AP01
Psychology	Talk*	9:15am, 11:15am, 1:30pm	30 minutes	Lecture Theatre Block, Lecture Theatre D
	Tour	Explore our facilities between 9:30am and 4pm. Self-guided tours start at the Psychology Drop-in on Level 4, Elizabeth Fry (AD) Building, where staff and students will also be available to answer your questions.		
	Drop-in	9am-4pm	Drop-in	Elizabeth Fry (AD) Building, Level 4
Sociology: Criminology and Sociology	Talk*	10:20am, 12:15pm, 2:30pm	30 minutes	Lecture Theatre Block, Lecture Theatre E
	Drop-in	9am-4pm	Drop-in	Elizabeth Fry (AD) Building, Level 3
Sport and Exercise Science	Talk*	9:25am, 11:20am, 3:30pm	30 minutes	Lecture Theatre Block, Lecture Theatre M
	Tour	10:10am, 12:05pm, 1:40pm, 2:30pm	50 minutes	Innovation for Health Learning Laboratory <i>Please collect tickets in advance from Innovation for Health Learning Laboratory. Tickets will be allocated on a first come, first served basis. We also encourage you to visit Surrey Sports Park.</i>
	Drop-in	9am-4pm	Drop-in	Innovation for Health Learning Laboratory
Theatre Production BA (Hons)	Talk & Tour*	10:15am, 12:40pm	Talk 50 minutes Tour 60 minutes	Ivy Arts Centre, Rex Doyle Studio <i>A 60 minute tour will follow immediately after the subject talk.</i>
	Drop-in	9am-4pm	Drop-in	Guildford School of Acting

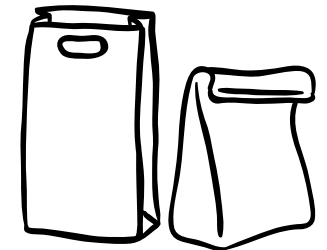
**Veterinary Medicine** - A separate, pre-booked programme of open day activities for prospective Veterinary Medicine students takes place on our Manor Park campus.



# WHERE TO EAT AND DRINK ON THE DAY

Our Food Festival will be open especially for open day visitors, serving a range of tasty snacks and lunches made from fresh, local ingredients. Find us close to PATS Marquee on Stag Hill campus from 10:30am.

## MANOR PARK CAMPUS



### PITCHSIDE COFFEE SHOP

Surrey Sports Park

{ 8am to 6pm }

### MANOR PARK SOCIAL

Manor Park Reception

{ 11am to 5pm }

Our latest venue! Perfect for a place to dine, meet your friends for a drink, or just to pick up a coffee.

### HEAD INTO GUILDFORD AFTER YOUR OPEN DAY

The town centre's 100-plus cafés, restaurants and pubs are only a 15-minute walk or a shuttle bus ride from our Stag Hill campus.

## LOOKING FOR MORE CHOICE?

Whether you're after a sit-down meal or a snack on-the-go, there are lots of places to eat and drink on campus.

## STAG HILL CAMPUS

### LAKESIDE COFFEE SHOP

Rik Medlik Building

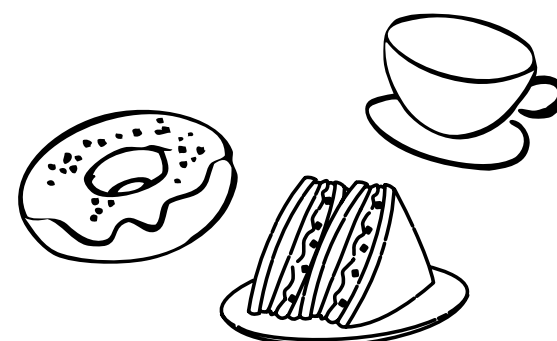
{ 8am to 5pm }

Lakeside Coffee Shop serves delicious coffee, cold drinks and a selection of cakes and sandwiches.

### HILLSIDE COFFEE SHOP

Oak House

{ 8am-5:30pm }



### THE HIDEOUT

Stag Hill campus

{ 9am to 5pm }





# SURREY SPORTS PARK

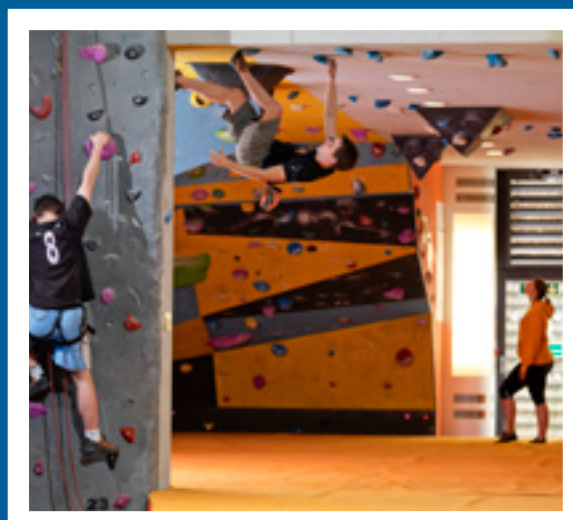


Team Surrey's Performance Sport Programme is designed to maximise the potential of both individual and team performance of our talented and hard-working student athletes.

There are a number of resources and programmes available to high-performance athletes and teams based at the University of Surrey. From our Dual Career Programme, to our Scholarships, all members of Team Surrey's Performance Support Programme are supported by a team of dedicated strength and conditioning coaches, physiotherapists, sports nutritionists, sport psychologists and performance lifestyle advisors.

Come along to the World Cup Suite through Pitchside at the Surrey Sports Park to learn more about our world class Performance Sport Programme.

Talks take place at 11:30am, 1pm and 2:30pm.

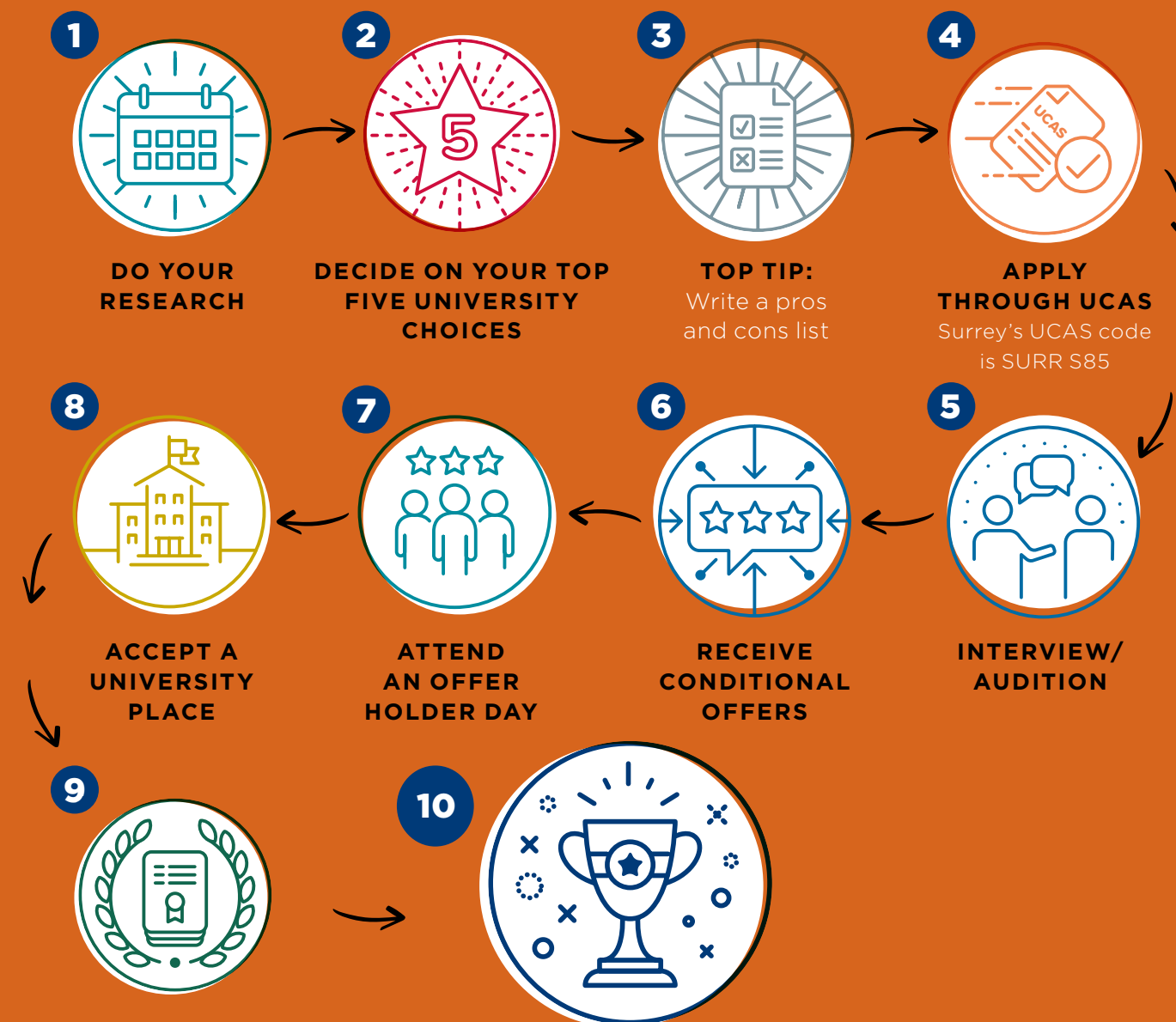


# WHAT'S NEXT?



The end of an open day is just the start of a new and exciting chapter in your life. As you continue to explore your options you'll get a better idea of which university is the right choice for you.

SO YOU'VE EXPLORED EVERYTHING THAT SURREY HAS TO OFFER. WHAT'S NEXT?



If you do not receive what you expect, not to worry, contact us and look at courses via clearing

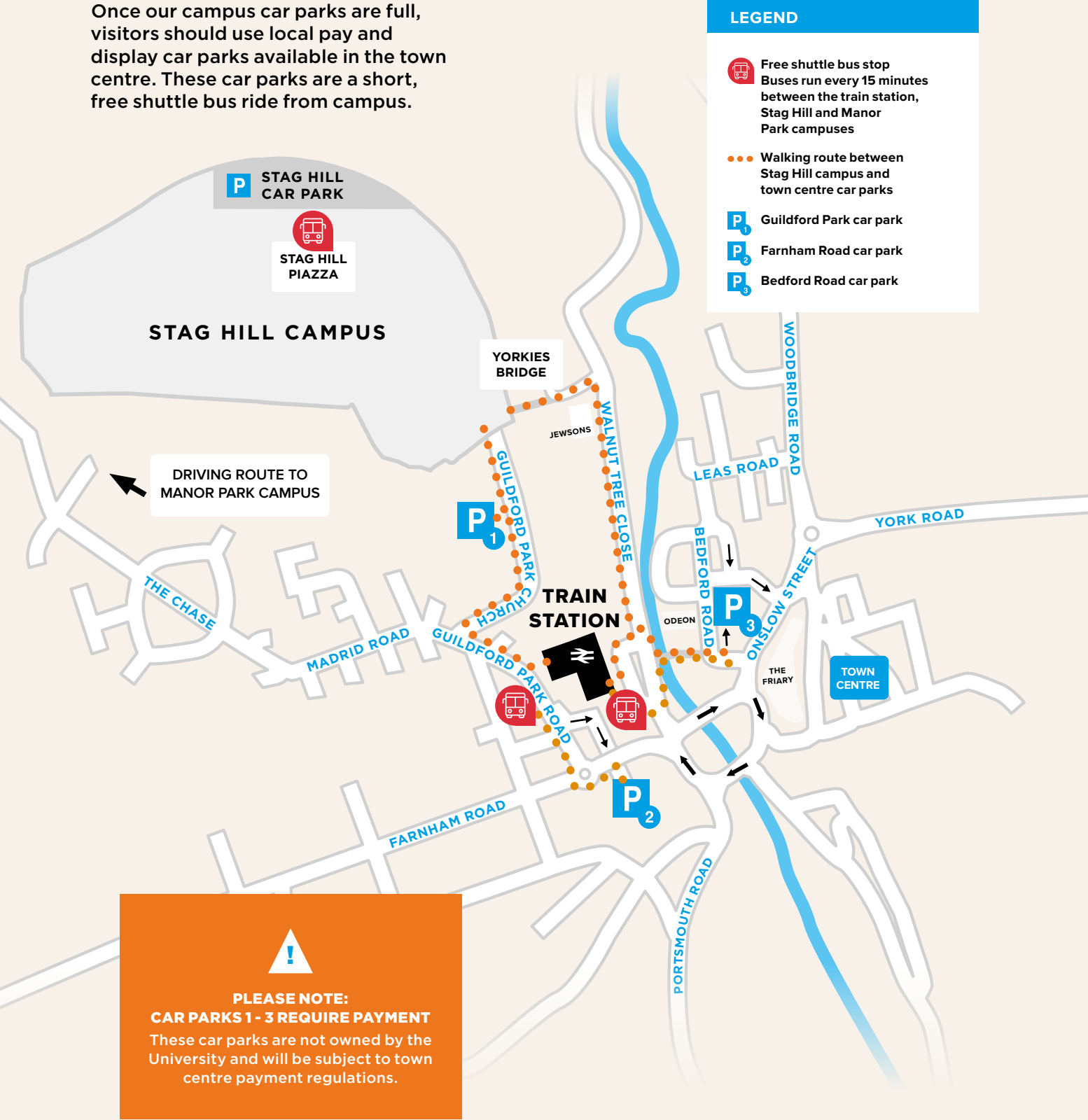


OPEN DAY MAPS

# GUILDFORD TOWN CENTRE

FINDING YOUR WAY AROUND

Once our campus car parks are full, visitors should use local pay and display car parks available in the town centre. These car parks are a short, free shuttle bus ride from campus.



**PLEASE NOTE:**  
**CAR PARKS 1 - 3 REQUIRE PAYMENT**  
These car parks are not owned by the University and will be subject to town centre payment regulations.





# STAG HILL

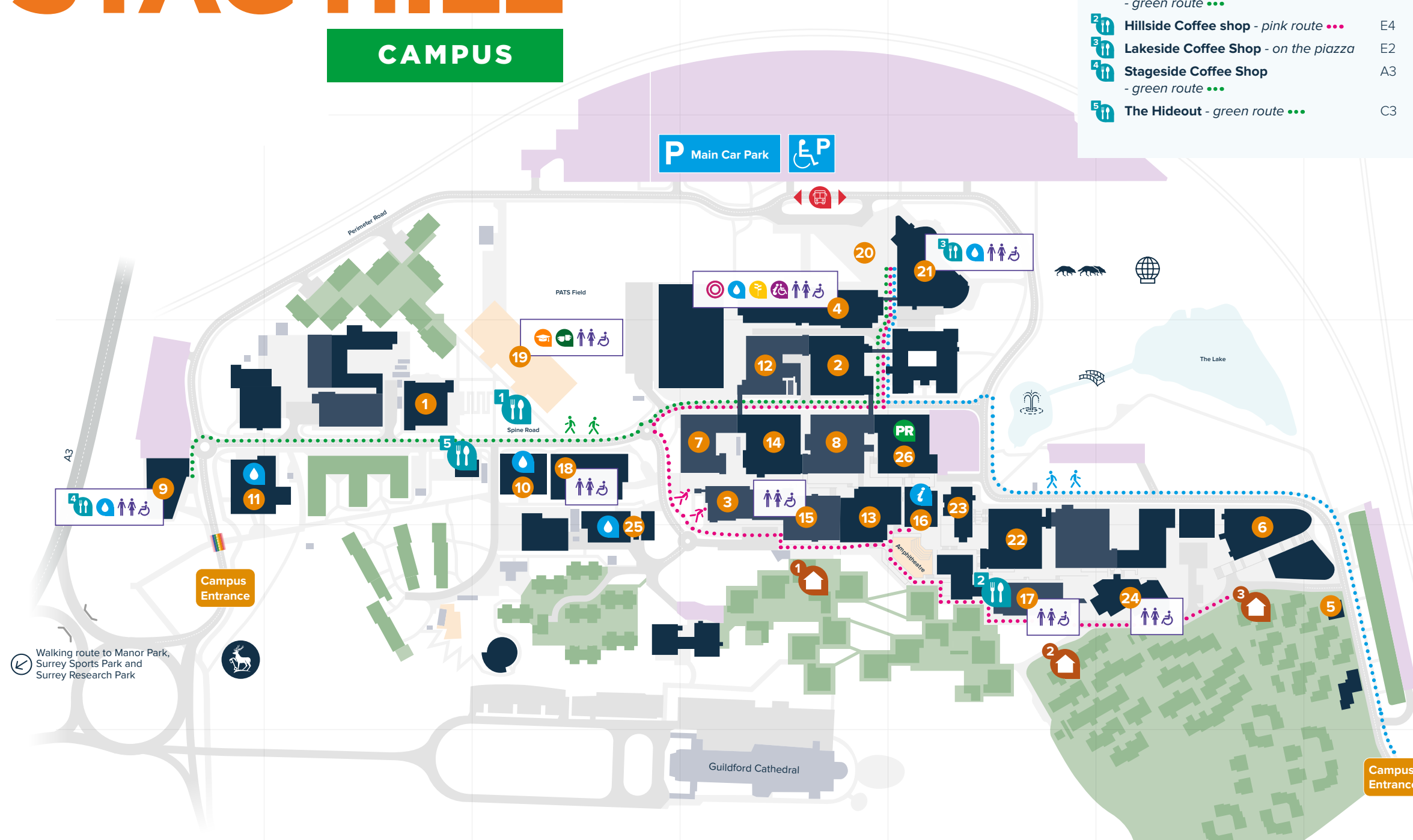
## CAMPUS

1

2

3

4



CAFÉS/RESTAURANTS/BARS			Grid ref.
1	University Food Festival	- green route	C3
2	Hillside Coffee shop	- pink route	E4
3	Lakeside Coffee Shop	- on the piazza	E2
4	Stageside Coffee Shop	- green route	A3
5	The Hideout	- green route	C3

KEY			Grid ref.
📍	Check-in	Please check-in here first GSA visitors can also check-in at Ivy Arts Centre	D2
ℹ️	Student Services Information Fair	Information on accommodation and student support	E3
🍷	Student Clubs and Societies	A range of student clubs and societies will be available here	C3
🚌	Campus Tour meeting point	Tours start every 15 minutes from Austin Pearce Foyer from 9am-4pm	D2
🙏	Prayer room		E3
🚏	Bus stop	Buses running to Guildford train station and Manor Park campus, Surrey Sports Park and Health Sciences and Medicine	D2
🚻	Toilet		
♿	Information and Accessibility Point		D2
☕	Complimentary tea and coffee point		C3
💧	Water bottle refill stations		

ACCOMMODATION SELF-GUIDED TOURS			Grid ref.
1	Battersea Court, Pickard Block (Budget) - pink route		D4
2	Stag Hill Court House 6 and 7 (Budget and Shared Bedrooms) - pink route		E4
3	University Court Block 45 (Standard En-suite) - pink route		F4
Our Accommodation Team will be available at MySurrey Hive if you have any queries.			

🌉	Yorkies Bridge
🚉	Guildford Railway Station
🚶	Town Centre via Walnut Tree Close

ACADEMIC BUILDINGS/STUDENT ADVICE, SUPPORT AND FACILITIES											
			Grid ref.				Grid ref.				Grid ref.
1	5G/6G Innovation Centre - green route	...	B3	10	Innovation for Health Learning Laboratory - green route	...	C3	19	PATS Marquee - green route	...	C3
2	Alan Turing Building (BB building), - blue route	...	D3	11	Ivy Arts Centre - green route	...	B3	20	Piazza		D2
3	Archives & Special Collections - pink route	...	D3	12	James Joule Building (BC building) - green route	...	D3	21	Rik Medlik Building - on the Piazza		E2
4	Austin Pearce Building (AP building) - on the Piazza		D2	13	Lecture Theatre Block- pink route	...	E3	22	Robert Boyle Building (AZ building), - blue route	...	E3
5	Centre for Wellbeing - blue route	...	G4	14	Lewis Carroll Building (AC building) - green route	...	D3	23	Senate House - blue route	...	E3
6	Duke of Kent Building - blue route	...	F3	15	Library & Learning Centre - pink route	...	D3	24	Students' Union - pink route	...	F4
7	Elizabeth Fry Building (AD building) - pink route	...	D3	16	MySurrey Hive – Stag Hill - pink route	...	E3	25	Teaching Block - pink route	...	C3
8	Frank Whittle Building (AB building) - pink route	...	D3	17	Oak House (Hillside Coffee Shop) - pink route	...	E4	26	Thomas Telford Building (AA building) - blue route	...	E3
9	Guildford School of Acting (GSA) - green route	...	A3	18	PATS Building - green route	...	C3				

**GETTING AROUND STAG HILL CAMPUS**

All important buildings are either located on the piazza or one of three walking routes - blue, green and pink - which are marked by coloured flags.

**ACCESSABLE APP**

Use the AccessAble app which provides detailed accessibility information about all of the University's campuses, buildings and facilities.

For more information and to download the app visit:  
[accessible.co.uk/organisations/university-of-surrey](https://accessible.co.uk/organisations/university-of-surrey)



# #SurreyOpenDay

## CONNECT WITH US

 /universityofsurrey

 @uniofsurrey

 @uni.surrey

 @uniofsurrey

 /universityofsurrey

## Safety Information

If the fire alarm sounds continuously, please leave the building by the nearest exit.  
In the event of an emergency, please contact our Campus Safety team: 01483 683333.  
Smoking in University buildings is not permitted.

## Disclaimer

We've made all reasonable efforts to ensure that the information in this publication was correct at the time of going to print in August 2025, but we can't accept any liability for any inaccuracies in the information published, and the information might change from time to time without notice.

For the latest and most up-to-date information, please visit our website:

[surrey.ac.uk](https://surrey.ac.uk)

## DID YOU ENJOY OUR OPEN DAY?

Please take a few minutes to complete our questionnaire to help us improve our future open days.  
[surrey.ac.uk/opendaysurvey2025](https://surrey.ac.uk/opendaysurvey2025)