

# Expect **MORE**

VET SCHOOL

---

OPEN DAY GUIDE  
AND CAMPUS MAP

SUNDAY 5 OCTOBER



UNIVERSITY OF  
**SURREY**



# YOUR OPEN DAY

An open day is your opportunity to discover everything you need to know before making one of the biggest decisions of your life.

From that first step onto campus until you head home, our open day is bursting with activities and experiences. We encourage you to make the most of your time with us, by exploring everything from teaching and accommodation through to sports and student life at Surrey.



Instagram  
@uniofsurrey



TikTok  
@uni.surrey



# GETTING AROUND

Parking for the Vet School Open Day is limited on Manor Park campus and we recommend travelling by public transport where possible.

When you arrive on Manor Park campus, follow signs to check-in at our Vet School Main Building.

Please arrive at Vet School Main Building at the start time for your booked session.

Your e-ticket will entitle you and one guest to attend the Vet School session.

Campus maps can be found at the back of this guide. Yellow signs and flags will mark the open day walking routes around our Manor Park campus.

If you would also like to visit Stag Hill campus, we recommend taking the free shuttle bus from Vet School Main Building to Stag Hill Piazza.

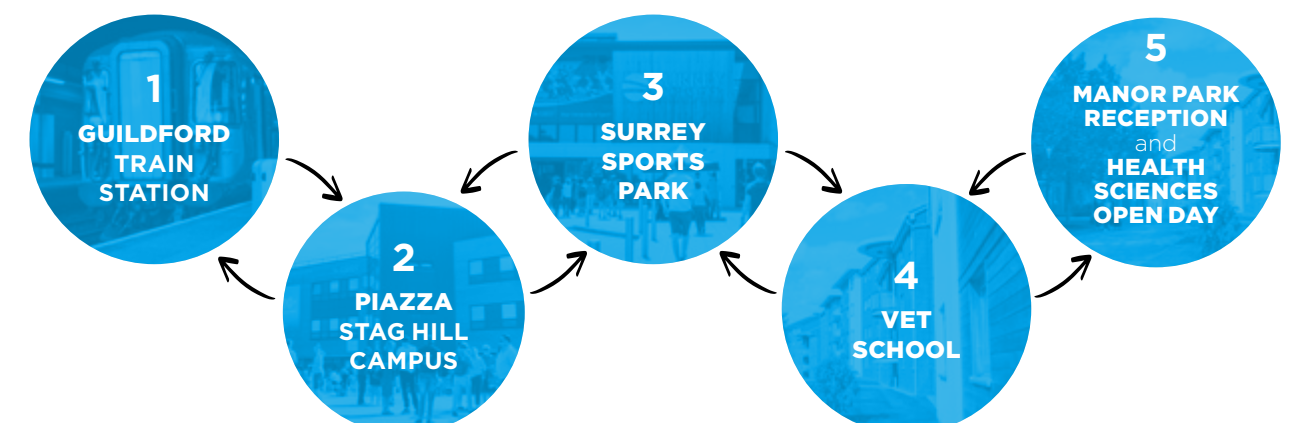
Please let us know in advance if you have any accessibility requirements so we can make sure you get the most out of your open day.  
Contact: [opendays@surrey.ac.uk](mailto:opendays@surrey.ac.uk)

If you have any queries on the day, please visit the check-in desk in Vet School Main Building.

Our Stag Hill campus is quite large and includes some steep inclines. If you visit this campus, staff at the Accessibility Point in Austin Pearce Building will be able to provide more information on the most accessible routes around this campus. Use the AccessAble app, which provides detailed accessibility information on the University's campuses, buildings and facilities.

For more information and to download the app, visit: [accessible.co.uk/organisations/university-of-surrey](https://accessible.co.uk/organisations/university-of-surrey)

From 8am to 5:20pm, our free open day shuttle buses run between Guildford train station, Stag Hill campus and Manor Park campus approximately every **15 minutes**.







# WHAT TO EXPECT



## YOUR SESSION

When you booked to attend the Vet School open day, you selected a specific session to attend. Your open day e-ticket (sent via email) states your selected session time:

**Session A** 8:30am-12noon

**Session B** 10am-1:30pm

**Session C** 12noon-3:30pm

**Session D** 1:30pm-5:00pm

Each session will include the following activity:

### 60-MINUTE WELCOME TALK

#### Lecture Theatre 1

This talk will begin with an introduction to Surrey, the campuses and life here in Guildford, followed by more information about studying veterinary medicine and science.

### 90-MINUTE FACILITIES TOUR

This tour will include our Clinical Skills suite in Vet School Main Building, as well as our Veterinary Clinical Skills and Pathology buildings.



At the end of the tour you will have the opportunity to visit our Admissions and Placement information stands available inside the Vet School Main Building Foyer. You will also have the opportunity to view examples of our accommodation, available on Manor Park campus. Please refer to the Manor Park campus map at the back of this guide for location of open accommodation and follow signs from Vet School Main Building.



### Don't forget to visit our Stag Hill campus...



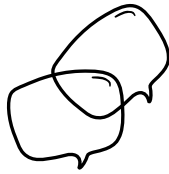
Your e-ticket to the Vet School open day also entitles you to access all the general activity taking place on Stag Hill campus including general talks, campus tours and Student Services Information Fair (see pages 8-11 for more information). You can hop-on a free shuttle bus, running regularly from the Vet School to Stag Hill Piazza, between 8am and 5:20pm.





STAG HILL CAMPUS

# OTHER TALKS



Make the most of every moment of your open day and attend our open day talks where you can learn more about student life at Surrey.

These talks take place throughout the day on our Stag Hill campus. Room locations are marked on the open day campus map.

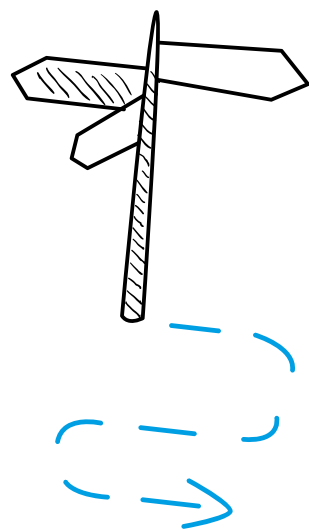
TALK	START TIMES	DURATION	LOCATION
Welcome Talk: Why Surrey?	8:35am, 9:25am, 11am, 11:50am, 1:20pm, 3pm	30 minutes	Stag Hill campus, Austin Pearce Building, AP3
Applying to Surrey and Student Finance	10:10am, 12:35pm, 2:10pm, 3:50pm	30 minutes	Stag Hill campus, Austin Pearce Building, AP3
Disability and Neuroinclusion	11am, 12:30pm, 3:20pm	30 minutes	11am, 3:20pm - Rik Medlik Building, Room 32MS01 12:30pm - Lecture Theatre Block, Lecture Theatre L
Accommodation at Surrey	10:20am, 12:30pm, 1:30pm, 3:30pm	30 minutes	Stag Hill campus, Rik Medlik Building, Room 03MS01

# STAG HILL INFORMATION FAIR

Visit our Student Services Information Fair located in MySurrey Hive on Stag Hill campus. Drop in anytime between 9am and 5pm to chat with our student service teams for more information on accommodation, student wellbeing and welfare, and to discover more about student life at Surrey.







## JOIN A TOUR

Explore our beautiful green campus during your open day to get a feel for what it could be like to live and study here.

### STAG HILL CAMPUS TOURS

Student ambassadors will lead you around the grounds and facilities on our Stag Hill campus.

To join a tour, go to the campus tour meeting point in Austin Pearce Building.

**Tours run every 15 minutes from 9am and last approximately 50 minutes. The last tour leaves at 4pm.**

### SURREY SPORTS PARK

Explore our amazing sports facilities at Surrey Sports Park, on Manor Park campus, and hear our students' experiences.

**Tours leave Surrey Sports Park Reception every half hour between 10am and 4pm.**

Also come along to our World Cup Suite at Surrey Sports Park to learn more about our world-class Performance Sport programme.

**Talks take place at 11:30am, 1pm and 2:30pm.**

# YOUR HOME AWAY FROM HOME

### VIEW ACCOMMODATION

Examples of Standard En-suite rooms will be open on Manor Park campus **from 9am-5pm**. Follow signs from Vet School Main Building and drop in to explore at your own pace.

If you have accommodation questions, please visit the Information Point at Manor Park Reception.

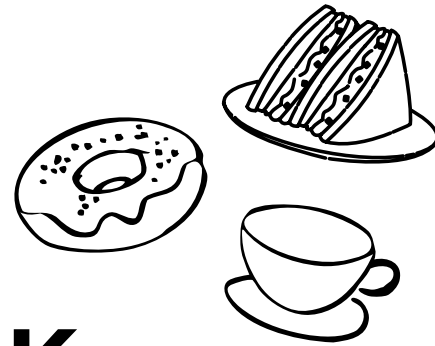
Examples of Standard En-suite and Budget rooms will also be available to view on Stag Hill campus **between 9am and 5pm**. Please view the campus map at the back of this guide for open accommodation locations.

If you would like to visit Stag Hill campus, please take the free shuttle bus from Vet School to Stag Hill piazza.





# WHERE TO EAT AND DRINK ON THE DAY



## LOOKING FOR MORE CHOICE?

Whether you're after a sit-down meal or a snack on-the-go, there are lots of places to eat and drink on campus.



## MANOR PARK CAMPUS

### VET SCHOOL CAFE

Vet School Main Building

{ 8am to 4pm }

### MANOR PARK SOCIAL

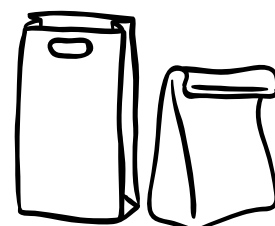
Manor Park Reception

{ 11am to 11pm }

### PITCHSIDE COFFEE

Surrey Sports Park

{ 8am to 6pm }



## STAG HILL CAMPUS

### STAGESIDE COFFEE SHOP

Guildford School of Acting

{ 9am to 4pm }

Stageside serves Union Hand Roasted Coffee, homemade baked goods, deep filled deli sandwiches, homemade soup, and grab and go food and drink.

### LAKESIDE COFFEE SHOP

Rik Medlik Building

{ 8am to 5pm }

### THE HIDEOUT

{ 9am to 5pm }

Serving coffee, cold drinks and snacks.

## HEAD INTO GUILDFORD AFTER YOUR OPEN DAY

The town centre's 100-plus cafés, restaurants and pubs are only a 15-minute walk or a shuttle bus ride from our Stag Hill campus.





# SURREY SPORTS PARK

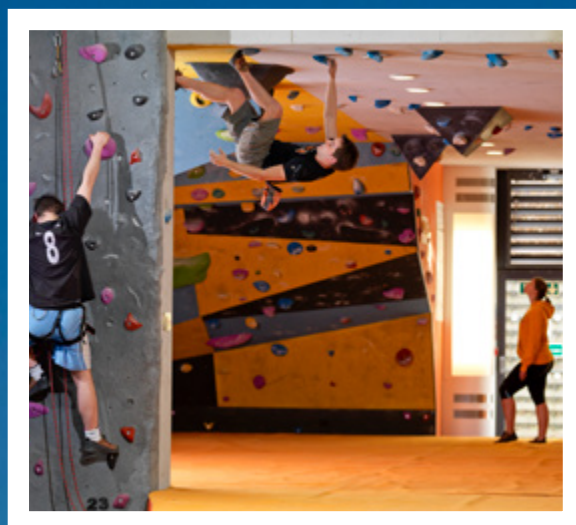


Team Surrey's Performance Sport Programme is designed to maximise the potential of both individual and team performance of our talented and hard-working student athletes.

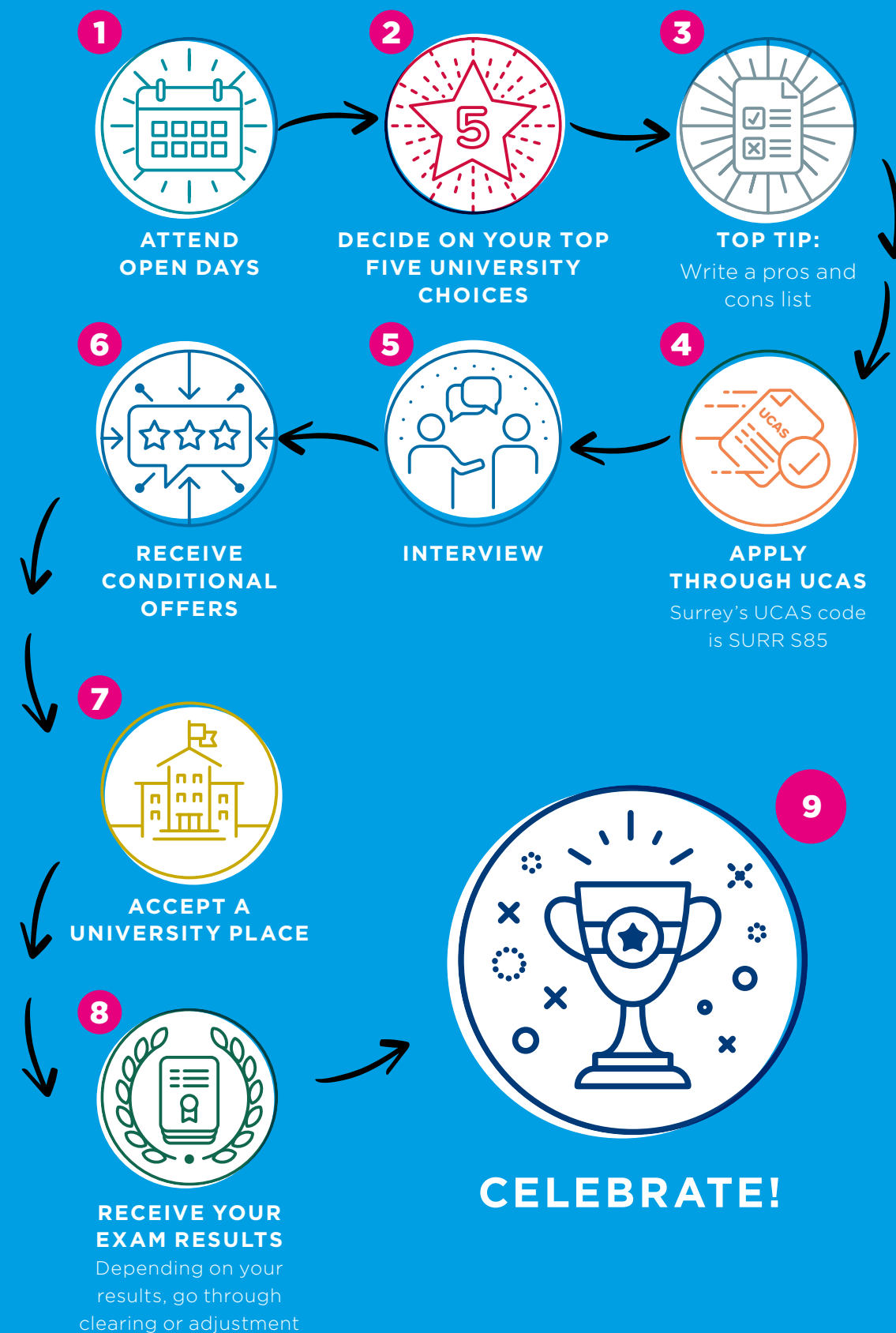
There are a number of resources and programmes available to high-performance athletes and teams based at the University of Surrey. From our Dual Career Programme, to our Scholarships, all members of Team Surrey's Performance Support Programme are supported by a team of dedicated strength and conditioning coaches, physiotherapists, sports nutritionists, sport psychologists and performance lifestyle advisors.

Come along to the World Cup Suite through Pitchside at the Surrey Sports Park to learn more about our world class Performance Sport Programme.

{ Talks take place at 11:30am, 1pm and 2:30pm. }



SO YOU'VE EXPLORED EVERYTHING THAT SURREY HAS TO OFFER. WHAT'S NEXT?



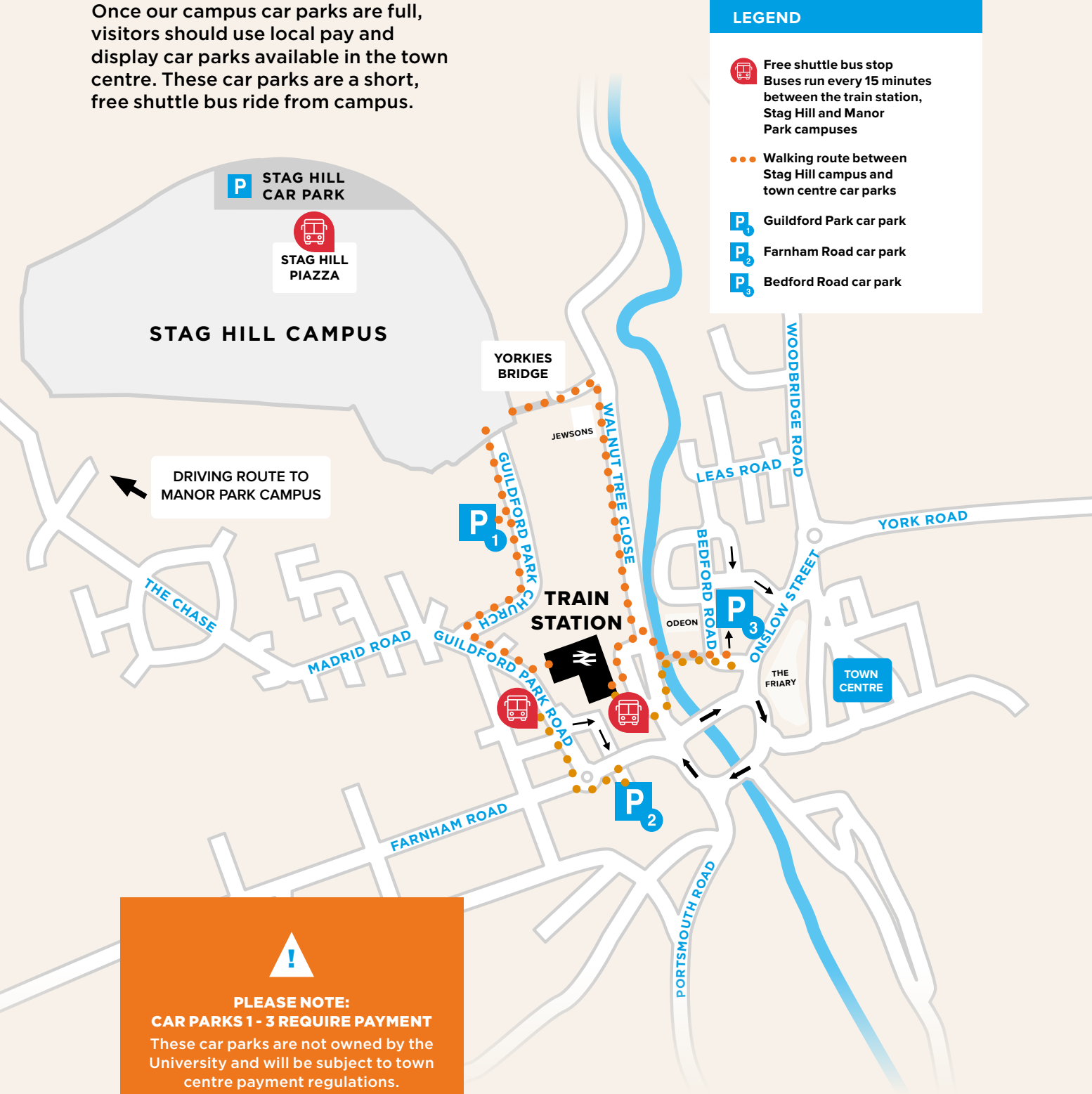


OPEN DAY MAPS

# GUILDFORD TOWN CENTRE

FINDING YOUR WAY AROUND

Once our campus car parks are full, visitors should use local pay and display car parks available in the town centre. These car parks are a short, free shuttle bus ride from campus.



**LEGEND**

- Free shuttle bus stop  
Buses run every 15 minutes between the train station, Stag Hill and Manor Park campuses
- Walking route between Stag Hill campus and town centre car parks
- Guildford Park car park
- Farnham Road car park
- Bedford Road car park

**PLEASE NOTE:**  
**CAR PARKS 1 - 3 REQUIRE PAYMENT**  
These car parks are not owned by the University and will be subject to town centre payment regulations.





# STAG HILL

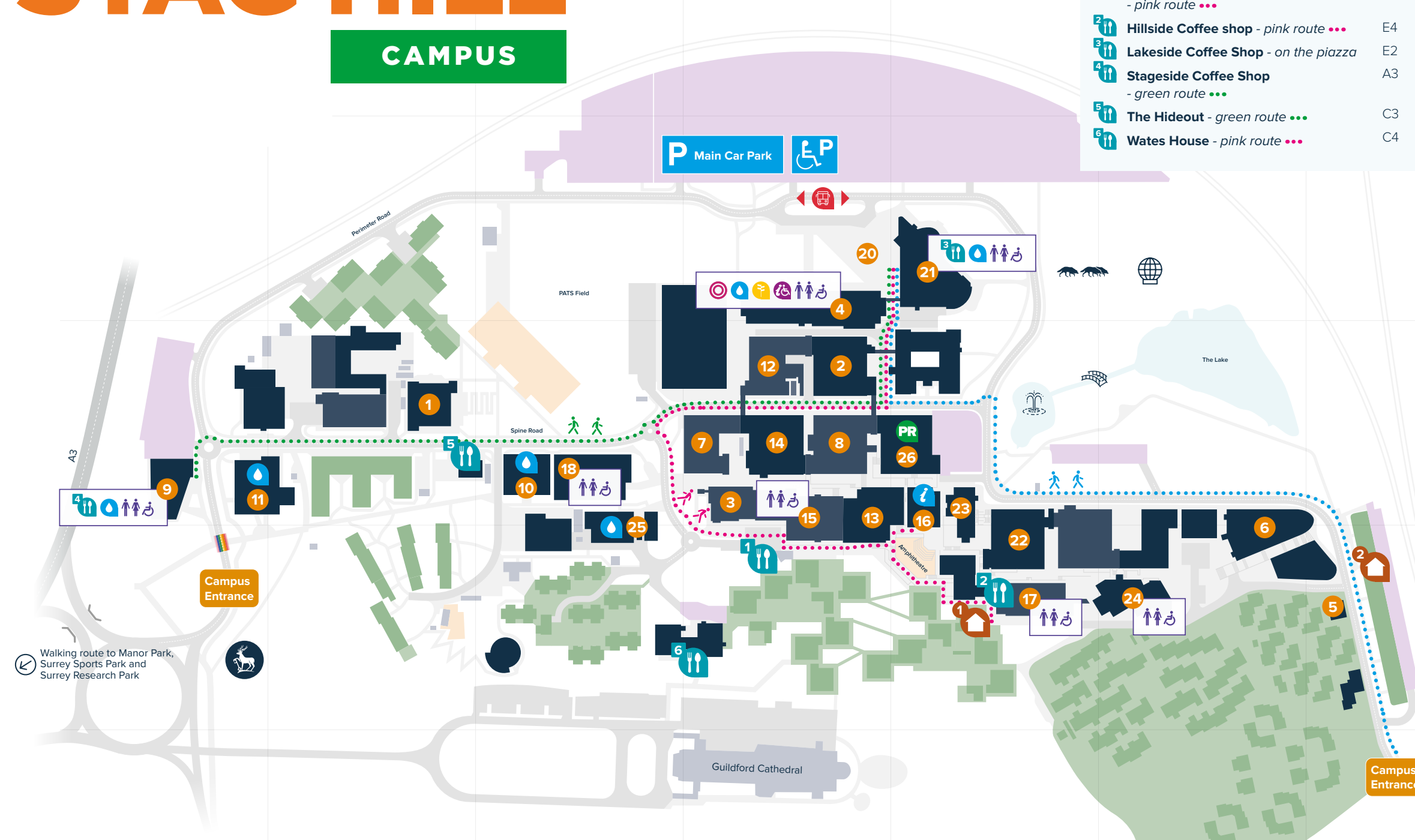
## CAMPUS

1

2

3

4



### CAFÉS/RESTAURANTS/BARS

Grid ref.

- 1 University Food Festival - pink route ... D4
- 2 Hillside Coffee shop - pink route ... E4
- 3 Lakeside Coffee Shop - on the piazza E2
- 4 Stageside Coffee Shop - green route ... A3
- 5 The Hideout - green route ... C3
- 6 Wates House - pink route ... C4

### KEY

Grid ref.

- Check-in D2  
Please check-in here first  
GSA visitors can also check-in at Ivy Arts Centre
- Student Services Information Fair E3  
Information on accommodation and student support
- Campus Tour meeting point D2  
Tours start every 15 minutes from Austin Pearce Foyer from 9am-4pm
- Prayer room E3
- Bus stop D2  
Buses running to Guildford train station and Manor Park campus, Surrey Sports Park and Health Sciences
- Toilet
- Information and Accessibility Point D2
- Water bottle refill stations

### ACCOMMODATION SELF-GUIDED TOURS

Grid ref.

- 1 Surrey Court, Blackwater (Budget) E4  
- pink route ...
  - 2 Millennium House (Standard En-suite) G4  
- blue route ...
- Our Accommodation Team will be available at MySurrey Hive if you have any queries.

- Yorkies Bridge
- Guildford Railway Station
- Town Centre via Walnut Tree Close

### ACADEMIC BUILDINGS/STUDENT ADVICE, SUPPORT AND FACILITIES

	Grid ref.		Grid ref.		Grid ref.
1 5G/6G Innovation Centre - green route ...	B3	10 Innovation for Health Learning Laboratory - green route ...	C3	20 Piazza	D2
2 Alan Turing Building (BB building), - blue route ...	D3	11 Ivy Arts Centre - green route ...	B3	21 Rik Medlik Building - on the Piazza	E2
3 Archives & Special Collections - pink route ...	D3	12 James Joule Building (BC building) - green route ...	D3	22 Robert Boyle Building (AZ building), - blue route ...	E3
4 Austin Pearce Building (AP building) - on the Piazza	D2	13 Lecture Theatre Block- pink route ...	E3	23 Senate House - blue route ...	E3
5 Centre for Wellbeing - blue route ...	G4	14 Lewis Carroll Building (AC building) - green route ...	D3	24 Students' Union - pink route ...	F4
6 Duke of Kent Building - blue route ...	F3	15 Library & Learning Centre - pink route ...	D3	25 Teaching Block - pink route ...	C3
7 Elizabeth Fry Building (AD building) - pink route ...	D3	16 MySurrey Hive – Stag Hill - pink route ...	E3	26 Thomas Telford Building (AA building) - blue route ...	E3
8 Frank Whittle Building (AB building) - pink route ...	D3	17 Oak House (Hillside Coffee Shop) - pink route ...	E4		
9 Guildford School of Acting (GSA) - green route ...	A3	18 PATS Building - green route ...	C3		

### GETTING AROUND STAG HILL CAMPUS

All important buildings are either located on the piazza or one of three walking routes - blue ..., green ... and pink ... - which are marked by coloured flags.

### ACCESSABLE APP

Use the AccessAble app which provides detailed accessibility information about all of the University's campuses, buildings and facilities.

For more information and to download the app visit:  
[accessible.co.uk/organisations/university-of-surrey](https://accessible.co.uk/organisations/university-of-surrey)



# #SurreyOpenDay

## CONNECT WITH US

 /universityofsurrey

 @uniofsurrey

 @uni.surrey

 @uniofsurrey

 /universityofsurrey

## DID YOU ENJOY OUR OPEN DAY?

Please take a few minutes to complete our questionnaire to help us improve our future open days. [surrey.ac.uk/pendaysurvey2025](https://surrey.ac.uk/pendaysurvey2025)

### Safety Information

If the fire alarm sounds continuously, please leave the building by the nearest exit.  
In the event of an emergency, please contact our Campus Safety team: 01483 683333.  
Smoking in University buildings is not permitted.

### Disclaimer

We've made all reasonable efforts to ensure that the information in this publication was correct at the time of going to print in September 2025, but we can't accept any liability for any inaccuracies in the information published, and the information might change from time to time without notice.

For the latest and most up-to-date information, please visit our website:

[surrey.ac.uk](https://surrey.ac.uk)