

Cerebral Palsy Link worker

Kimberley J Smith, Miriam Creeger, Emma Livingstone, Valerie L Stevenson, Karen Lowton, Meriel Norris, Cherry Kilbride, Christina Victor, Thelonious McCarthy Budzynski, Erica Ranzato

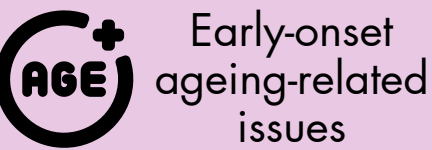
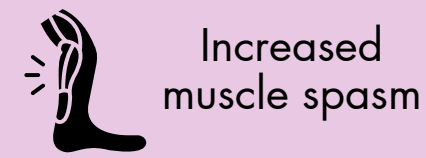
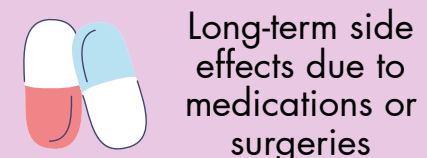
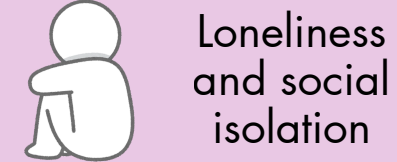


1.) Aims of project

- 1.) Understand the needs of people ageing with cerebral palsy (CP) in London (qualitative study)
- 2.) Co-develop training for a specialised CP link worker to support adults aged 40+ with CP
- 3.) Assess the feasibility of a specialised link worker for adults ageing with CP in North Central London

2.) Why is project needed?

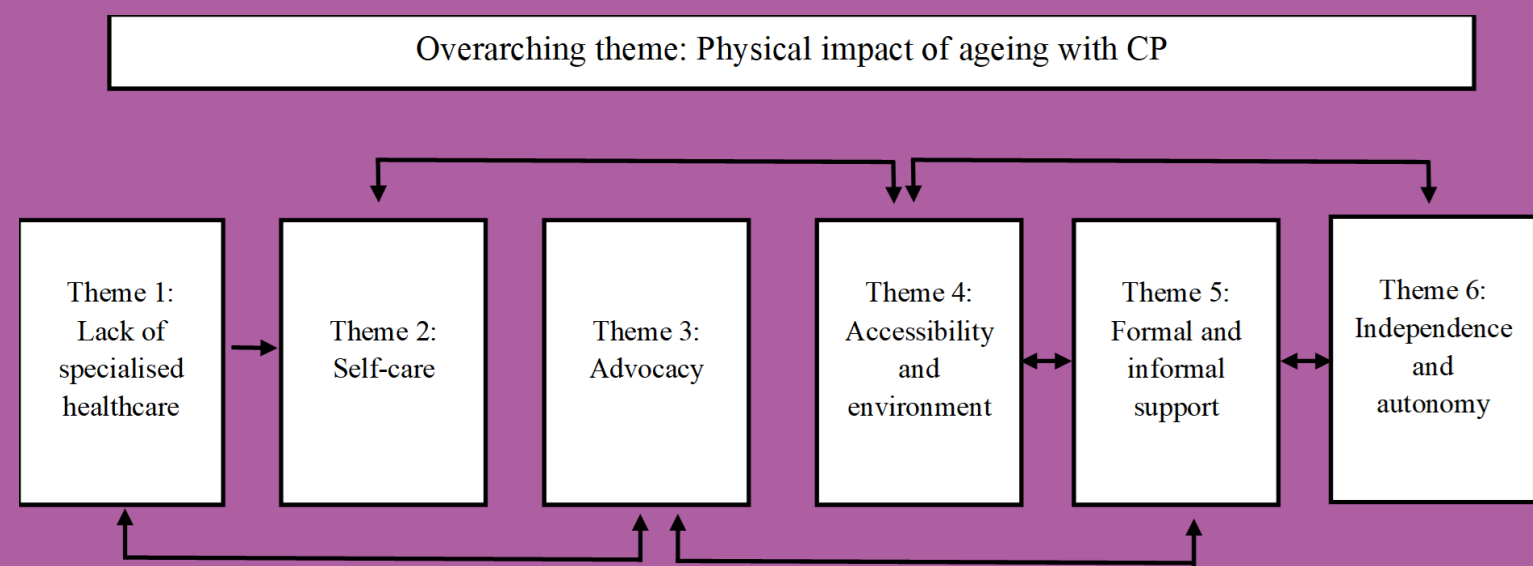
Ageing with CP



At a time when people's health needs are at the most complex, adults with CP have no specialised support services

4.) Qualitative study

22 adults with CP took part in semi-structured interviews
Below are findings from ageing well with CP analysis



Undertaking three additional analyses:

- 1.) Social support for people ageing with CP
- 2.) Psychosocial impact of ageing with CP
- 3.) Role of community in ageing with CP

5.) Co-development workshops

Workshops with adults with CP (n=7), social prescribers (n=4) and health and social care professionals (n=5). Main suggestions:

Ensure clarity about the role of link worker (not there to support with healthcare)

Have link worker undergo motivational interview training

Include case studies and observations in training

Make link worker aware of disability rights and research on ageing with CP

6.) CP Link worker intervention

A qualified link worker with CP (Theo McCarthy) was employed in Dec 25. The intervention started in Feb 26
17 participants approached; 7 agreed to participate; 3 have met with Theo



3.) Advisory groups

- Lived experience: 6 adults with CP
- Professional: 3 healthcare professionals and 1 social prescriber

7.) Next steps

- Intervention due to finish in Jan 27
- Undertake feasibility assessment with integrated process evaluation of intervention