



CENTRE OF
EXCELLENCE
ON AGEING
UNIVERSITY OF SURREY



GIA
Longevity
Global Initiative on Ageing and Longevity

“
**Longer lives are one
of humanity’s greatest
achievements. But longer
lives are not yet healthier
lives for all.**

UN Decade of Healthy Ageing

”

Executive summary

For more than 50 years, the University of Surrey has been imagining what a better world would look like, then doing the work to make it happen. We have world leading researchers, a history of collaborative partnerships, and specialised institutes and centres.

The Centre of Excellence on Ageing (CEA) is an ambitious initiative that is in partnership with the Global Initiative on Ageing and Longevity (GIA Longevity) under the auspices of the United Nations (UN). The CEA will champion their mission of supporting the goals proposed by the UN in the Assembly of the Decade of Healthy Ageing, and the Sustainable Development Goals.

The CEA’s aim is to promote research, teaching, capacity building and influence policy related to ageing and longevity. The CEA will enhance lifelong health globally through interdisciplinary research in fields such as health, social gerontology, psychology, biomedical sciences and economics. The CEA acts as a platform, uniting research groups and individuals to study various aspects of healthy ageing, including biological mechanisms, social implications, technology utilisation, and policy development. The centre collaborates with local, national, and global institutions, as well as industry, government, civil society, all the while engaging with the public at all age groups to advance knowledge and address challenges related to ageing populations and ageing processes across the lifecycle.

The Challenge

A growing recognition regarding the critical importance of gaining a deeper understanding of the various facets of the ageing process has emerged. This recognises the importance of taking a whole life approach to ageing from conception to death.

It is undeniable that disparities exist in education, employment opportunities, living conditions, and access to social care and health services, leading to a stark inequality in the quality of life of our ageing population and ageing amongst future generations.

The Solution

The Centre of Excellence on Ageing provides the necessary conditions to achieve our vision of advancing knowledge and addressing challenges associated with ageing.

By engaging Surrey's thought leaders across diverse disciplines, the CEA impact engine; conducting ground-breaking research, advancing innovation and technology, and delivering training and capacity and skills development.

A Global Approach

By collaborating with the Global Initiative on Ageing and Longevity (GIA Longevity) under the auspices of the United Nations (UN), Surrey is embracing a truly global approach to confront the challenges posed by an ageing population and the associated disparities. The CEA is aligned with the GIA Longevity's mission of supporting the goals proposed by the UN in the Assembly of the Decade of Healthy Ageing, and the Sustainable Development Goals.

With our collective knowledge, expertise, and commitment, our efforts will not only positively impact lifelong health within our borders, but also help address the disparities that exist globally.

People in the most deprived circumstances can expect to live 20 fewer healthy years due to disadvantages in education, employment, living conditions, and disparities in social care and health services compared to those in the least deprived areas.

ak0002
2026-02-26 13:69:34

(@GIA Longevity)

ak0002
2026-02-26 13:59:53

GIA Longevity's



Mission

The Centre of Excellence on Ageing (CEA) is a research and impact focused centre located at the University of Surrey.

The Centre was established in April 2023 with its partner, the Global Initiative on Ageing and Longevity (GIA Longevity) under the auspices of the United Nations (UN), to represent the GIA' Longevity's first centre of excellence in the world. The CEA is dedicated to advancing knowledge and understanding of ageing across the whole life course, promoting both the concept and the practice of Healthy Ageing for individuals and societies the world over, as well as promoting actions in key areas including health, education, science and mobility.

To achieve these goals, the CEA is focused on both multi and interdisciplinary ageing research that brings together experts from various fields, including social gerontology, psychology, economics, social policy, engineering, health and social care, biomedicine, industry, and others, to promote ageing research and knowledge exchange at Surrey.

Goal

To make Surrey a world-leading centre of excellence in ageing, outperforming our UK competitors and operating on a global stage by 2030.

According to data from World Population Prospects: the 2019 Revision, by 2050,

**1.5billion
(1 in 6) people
in the world will be
over 65 (16%)**

(from UN and pewresearch.org)

According to ONS Statista by 2050

**24.8% (1 in 4)
people living
in the UK will
be 65 and over,**

around 18.3 million individuals



**CENTRE OF
EXCELLENCE
ON AGEING**
UNIVERSITY OF SURREY



GIA
Longevity
Global Initiative on Ageing and Longevity

Our vision

The overarching theme of the CEA is towards equity and equality in ageing. Within this broad theme, the CEA has a number of key thematic areas.

Key themes

The CEA have identified current research strengths from across the University. These themes cross research boundaries and will facilitate further inter and multi-disciplinary collaborations.



Core pillars

To drive forwards three key areas of activity.

Research and Innovation



Working in collaborative partnerships, the Centre impacts at local, national and international levels in the area of healthy ageing.

Policy Influence



In partnership with our collaborative associates, the Centre is establishing deep and enduring engagement, encompassing a diverse array of public audiences and decision makers across local, national and international levels.

Capacity Building



Through teaching, training, capacity building and the creation of Fellows, the Centre is facilitating the researcher pipeline. Surrey's Medical School and Doctoral College will further support training initiatives.

Professor Derk-Jan Dijk



Derk-Jan Dijk is a Distinguished Professor of Sleep and Physiology, Director of the Surrey Sleep Research Centre and Associate Head Research and Innovation at the School of Biosciences. Derk-Jan has led numerous projects on the effects of ageing on the physiology of sleep and cognition. Funded by the UK Dementia Research Institute, his current research focuses on the role of sleep and circadian rhythms in dementia and the evaluation of novel technologies for monitoring sleep in the community. Within the CEA, Derk-Jan brings expertise in experimental medicine, clinical trials and longitudinal monitoring of physiology and behaviour across the adult life span.

Professor Amelia Hadfield



Associate Vice-President of External Engagement, Founder and Former Co-Director of the Centre for Britain and Europe (CBE), and Director of CIFAL Surrey (affiliated with UNITAR), Amelia is a Founder of the Centre of Excellence on Ageing, supporting the strategic goals of the university including international partnership, networks (she is currently University Global Partnership Network (UGPN) chair), enhancing research cooperation, and mobility.

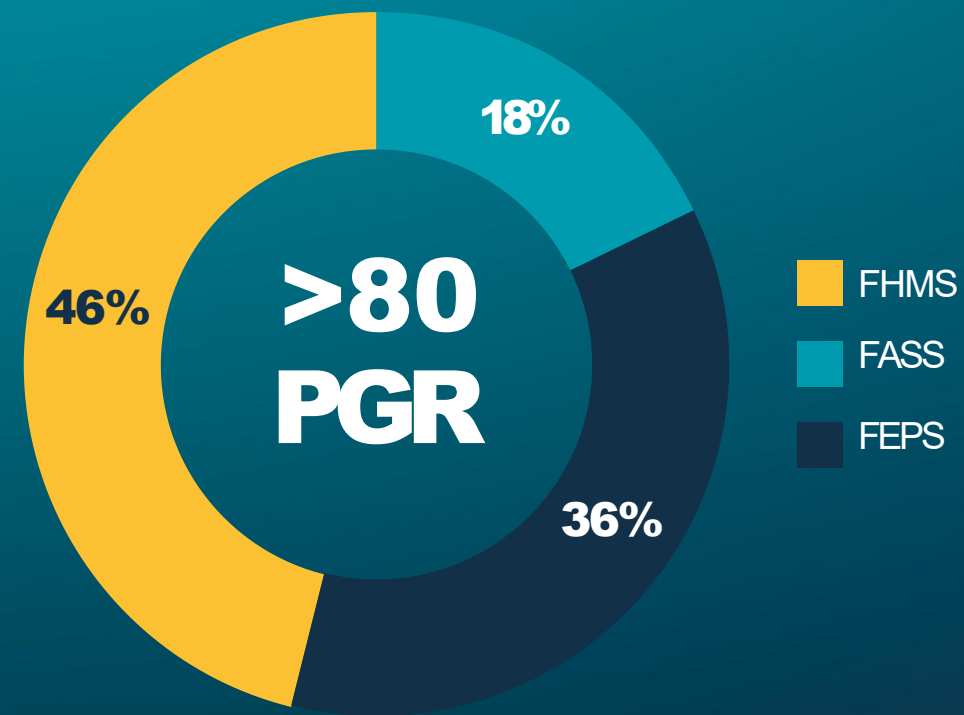
Professor Andrew King



Andrew King is a Professor of Sociology and Associate Dean (Doctoral College) for the Faculty of Arts, Business and Social Sciences. Andrew has led a wide range of projects on the social aspects of ageing, including those funded by Horizon Europe, UKRI and NIHR. Within the CEA, Andrew brings expertise in leading research focused on community engagement, co-production and knowledge exchange, alongside intersecting inequalities.

SURREY EXPERTISE

Number of PGR working in Ageing research



>340

research proposals submitted since 2019



>120

academics across all faculties who work in Ageing research

Research in Lifelong Health has been a University priority since 2016

More than **£18M**

in ageing research funding has been awarded to Surrey since 2019

Since 2019, more than **25 individual projects** dedicated to impact in ageing have been awarded funding

World Class Labs:



Surrey Sleep Research Centre

20 years of research and home to a forward-thinking team of physiologists, molecular biologists, neuroscientists, psychologists and engineers.

SEISMIC

Facility for Spatially rEsolved sIngle and Sub-cellular oMICs – the first facility in the UK to research biological phenomenon on how cells age and other rules of life.



Centre of excellence in analytical science

A new initiative in bringing together intellectual thought leaders in measurement science and a competitive provider of measurement services for internal and external stakeholders. It combines world leading expertise in FEPS (nanomaterials characterisation, imaging, surface analysis, nanomanipulation and ion beams) with FHMS (“omics,” informatics, veterinary science, and biomedicine).

Other excellence hubs:



Centre for Ageing and Generations

brings together social scientific expertise to conduct policy-relevant research.

Centre for Biomedical Engineering

uses the application of engineering and technology to problems in medicine and biology, from the assessment, diagnosis and treatment of disease to a better understanding of the way the body works.



CENTRE OF EXCELLENCE ON AGEING

UNIVERSITY OF SURREY



GIA

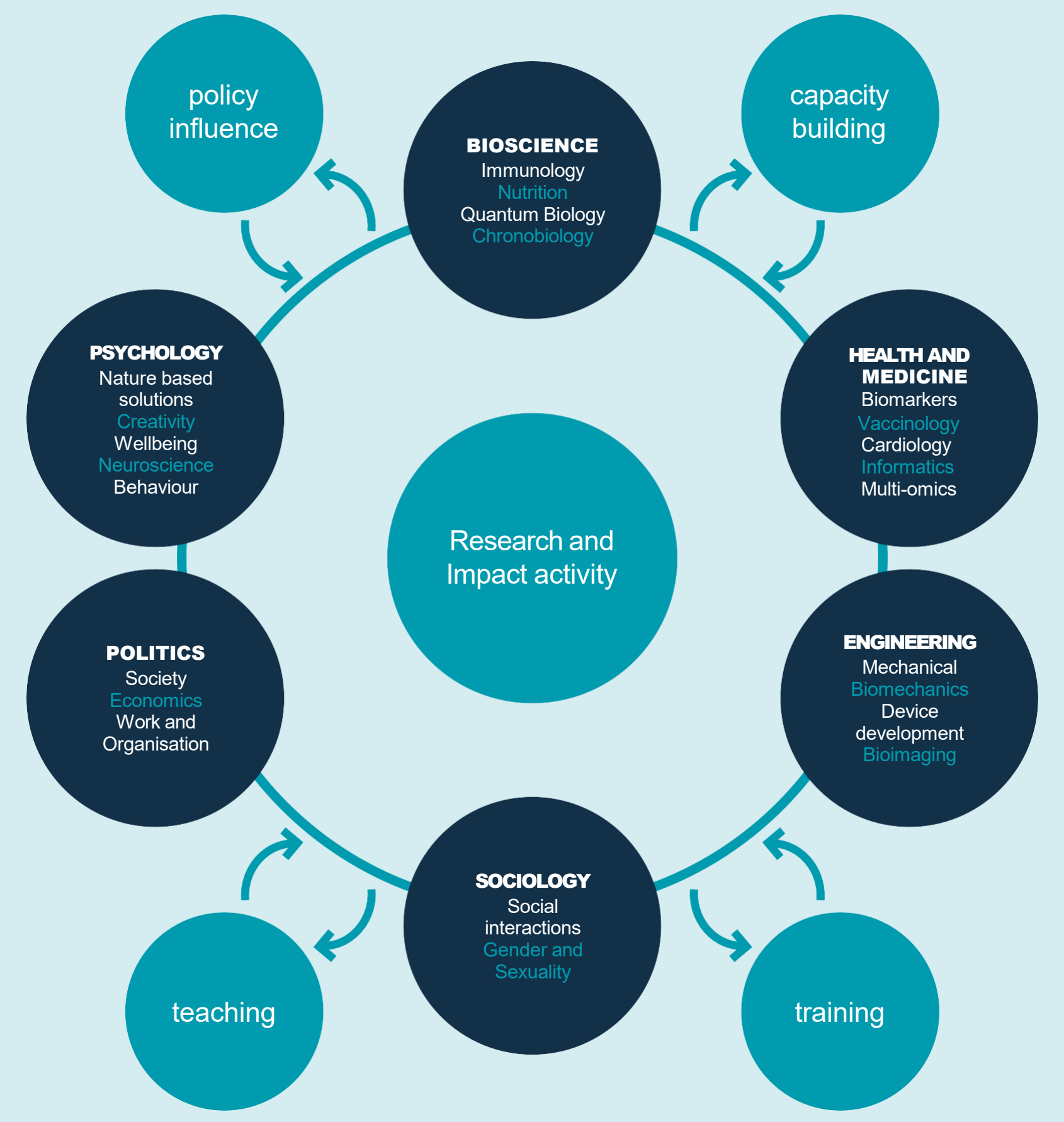
Longevity

Global Initiative on Ageing and Longevity



The Surrey Advantage

The CEA involves academics across all faculties and is supported by Research Assistants, technicians and PhD students. The multi disciplinary team is joined by external experts from organisations, institutions and industry with whom we have long-standing collaborations.



CEA

Healthy Ageing/Ageing Well

Tackling Inequalities in Ageing

Technologies for Ageing and Generative AI

Policy and Community Engagement

Immunity

Biological

Sleep and Chronobiology

Psychological

Multiple Longterm Conditions

Intersecting Inequality

AI and Digital Health

Technology

Engaging Social and Cultural Organisations

Hospitality and Business

National and International Policy



Prof Deborah Dunn-Walters
Prof of Immunology



Prof Sue Lanham-New
Prof of Human Nutrition



Prof Derk-Jan Dijk
Prof of Sleep and Physiology



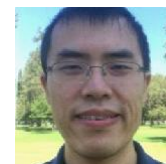
Prof Birgitta Gatersleben
Prof of Environmental Psychology



Prof Caroline Nicholson
Prof of Palliative Care and Ageing



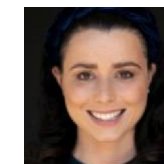
Prof Andrew King
Prof of Sociology in Ageing and Society



Dr Haomiao Jin
Lecturer in Health Data Science



Prof David Frohlich
Prof of Interaction Design



Dr Georgia Bowers
Lecturer in Applied and Contemporary Theatre



Dr Loma Wang
Snr Lecturer in Marketing and Revenue Management



Prof Amelia Hadfield
Prof of Politics and Associate Vice-President of External Engagement



Prof Christine Rollier
Prof of Vaccinology



Prof Christian Heiss
Prof of Cardiovascular Medicine



Dr Daan van der Veen
Snr Lecturer in Sleep Lecturer in Sleep and Chronobiology



Dr Kimberly Smith
Snr Lecturer in Clinical Health Psychology



Prof Elizabeth Barley
Prof of Mental Health Sciences and Nursing



Prof Jo Blanden
Prof of Economics



Dr Samaneh Kouchaki
Snr Lecturer in Machine Learning for Healthcare



Prof Melanie Bailey
Reader in Analytical Science



Dr Daniel Abasolo
Snr Lecturer in Biomedical Engineering



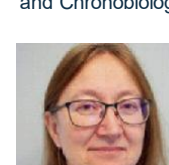
Prof Nigel Gilbert
Prof of Sociology



Prof Natalie Riddell
Snr Lecturer in Immunology and Ageing



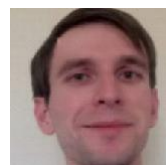
Prof Gioanna Nalesso
Snr Lecturer in Musculoskeletal Biology



Prof Anne Skeldon
Prof of Mathematics and Computational Biology



Prof Victoria Tischler
Prof of Behavioural Science



Dr Richard Green
Surrey Future Fellow



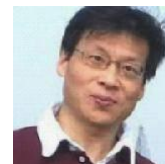
Prof Nophar Gelfman
Prof of Health and Biomedical Informatics



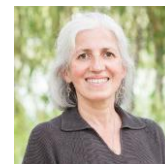
Dr Nikolas Thomopoulos
Associate Prof in Transport



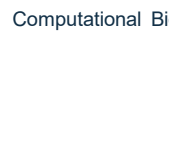
Dr Albert Kimbu
Reader of Tourism and Transport



Dr Qibo Zhang
Snr Lecturer in Immunology



Dr Lisiane Meira
Lecturer DNA Damage and Ageing



Prof Anne Skeldon
Prof of Mathematics and Computational Biology



Dr Kathrin Chen-Kadosh
Reader in Developmental Cognitive Neuroscience



Dr Richard Green
Surrey Future Fellow



Prof Jo Armes
Prof of Cancer Care and lead in Digital Health



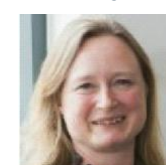
Prof Carol Crean
Reader in Physical and Materials Chemistry



Professor Anthony Whetton
Professor of Translational Biosystems



Professor Christina Jones
Professor in Clinical Health Psychology



Prof Christine Hine
Prof of Sociology in Science and Technology

CEA Collaborative Partners



Contact Us

ageingexcellence@surrey.ac.uk

<https://www.surrey.ac.uk/centre-excellence-ageing>